



## **SK-ERS**

ER COLLET CHUCKS

*PORTAPINZA ER*

4.3

## **SK-ERSM**

ER MINI COLLET CHUCKS

*PORTAPINZA ER GHIERA MINI*

4.4

## **SK-WE**

WELDON ( DIN 1835 B ) END MILL HOLDERS

*PORTAFRESE TIPO WELDON ( DIN 1835 B )*

4.5

## **SK-C**

COMBI SHELL MILL HOLDERS

*PORTAFRESA COMBINATO UNIVERSALE*

4.6

## **SK-SM**

SHELL MILL HOLDERS

*PORTAFRESA FISSO*

4.7

## **SK-CMB**

MORSE TAPER ADAPTORS FOR DRILLS WITH FLAT TANG

*RIDUZIONE A CONO MORSE PER PUNTE CON TENONE*

4.8

## **SK-CMA**

MORSE TAPER ADAPTORS FOR MILLS WITH THREAD

*RIDUZIONE A CONO MORSE PER FRESE CON ATTACCO FILETTATO*

4.9

## **SK-TC**

TENSION/COMPRESSION TAP HOLDERS

*MANDRINO COMPENSATO ASSIALMENTE*

4.10

# DIN 2080

<b>SK-R</b> RIGID TAP HOLDERS <i>MANDRINO RIGIDO</i>	4.11
<b>SK-SMC</b> MILLING CHUCK <i>MANDRINO A FORTE SERRAGGIO</i>	4.12
<b>SK-SDCPU</b> TAPER INTEGRAL KEYLESS DRILL CHUCKS <i>PORTAPUNTA INTEGRALE</i>	4.13
<b>SK-DCA</b> DRILL CHUCK ARBORS <i>MANDRINO CON ATTACCO PER MANDRINI AUTOSERRANTI</i>	4.14
<b>SK-RS</b> REDUCTION SLEEVES <i>MANDRINO DI RIDUZIONE</i>	4.15
<b>SK-SBB</b> BLANK BARS <i>STELO TENERO LAVORABILE</i>	4.16
<b>SK-MTH</b> MASTERS FOR MODULAR TAP HOLDERS <i>CONO MODULARE</i>	4.17
<b>DIN 2080</b> DIMENSIONS <i>DIMENSIONI</i>	4.18

# DIN 2080

## ER COLLET CHUCKS

### PORTAPINZA ER

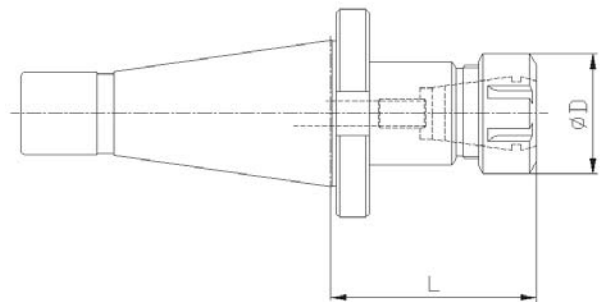


Part Number	Tap Size	Collet	Collet Range	L	ØD
SK30-ERS16-L70	ISO 30	ER 16	0,5 ÷ 10	70	32
SK30-ERS20-L70	ISO 30	ER 20	1 ÷ 13	70	35
SK30-ERS25-L50	ISO 30	ER 25	1 ÷ 16	50	42
SK30-ERS32-L50	ISO 30	ER 32	2 ÷ 20	50	50
SK30-ERS40-L70	ISO 30	ER 40	3 ÷ 26	70	63
SK40-ERS11-L80	ISO 40	ER 11	0,5 ÷ 7	80	19
SK40-ERS16-L47	ISO 40	ER 16	0,5 ÷ 10	47	32
SK40-ERS16-L100	ISO 40	ER 16	0,5 ÷ 10	100	32
SK40-ERS16-L150	ISO 40	ER 16	0,5 ÷ 10	150	32
SK40-ERS20-L47	ISO 40	ER 20	1 ÷ 13	47	35
SK40-ERS25-L70	ISO 40	ER 25	1 ÷ 16	70	42
SK40-ERS32-L70	ISO 40	ER 32	2 ÷ 20	70	50
SK40-ERS32-L100	ISO 40	ER 32	2 ÷ 20	100	50
SK40-ERS32-L160	ISO 40	ER 32	2 ÷ 20	160	50
SK40-ERS40-L70	ISO 40	ER 40	3 ÷ 26	70	63
SK40-ERS40-L100	ISO 40	ER 40	3 ÷ 26	100	63
SK40-ERS40-L120	ISO 40	ER 40	3 ÷ 26	120	63
SK50-ERS16-L100	ISO 50	ER 16	0,5 ÷ 10	100	32
SK50-ERS25-L80	ISO 50	ER 25	1 ÷ 16	80	42
SK50-ERS25-L100	ISO 50	ER 25	1 ÷ 16	100	42
SK50-ERS25-L160	ISO 50	ER 25	1 ÷ 16	160	42
SK50-ERS32-L70	ISO 50	ER 32	2 ÷ 20	70	50
SK50-ERS32-L100	ISO 50	ER 32	2 ÷ 20	100	50
SK50-ERS32-L140	ISO 50	ER 32	2 ÷ 20	140	50
SK50-ERS40-L63	ISO 50	ER 40	3 ÷ 26	63	63
SK50-ERS40-L100	ISO 50	ER 40	3 ÷ 26	100	63
SK50-ERS40-L140	ISO 50	ER 40	3 ÷ 26	140	63

### SK-ERS

WITH PRE-BALANCED NUTS - COLLET CHUCKS PROVIDED WITH BACK UP  
SCREW AND CLAMPING NUT

CON GHIERE PRE-BILANCIATE - MANDRINO FORNITO DI VITE DI REGISTRAZIONE E  
GHIERA

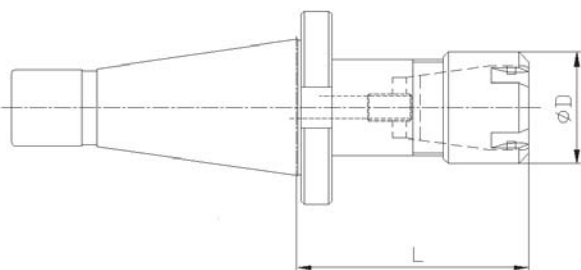


# DIN 2080

**NEW**

## ER MINI COLLET CHUCKS *PORTAPINZA ER GHIERA MINI*

Part Number	Tap Size	Collet	Collet Range	L	ØD
SK30-ERS16M-L72	ISO 30	ER 16 MINI	1 ÷ 10	72	22
SK40-ERS16M-L82	ISO 40	ER 16 MINI	1 ÷ 10	82	22
SK40-ERS20M-L90	ISO 40	ER 20 MINI	1 ÷ 13	90	28
SK40-ERS25M-L100	ISO 40	ER 25 MINI	1 ÷ 16	100	35



**SK-ERSM**

WITH PRE-BALANCED NUTS - COLLET CHUCKS PROVIDED WITH BACK UP  
SCREW AND CLAMPING NUT

*CON GHIERE PRE-BILANCIATE - MANDRINO FORNITO DI VITE DI REGISTRAZIONE E  
GHIERA*

# DIN 2080

## WELDON ( DIN 1835 B ) END MILL HOLDERS PORTAFRESE TIPO WELDON ( DIN 1835 B )

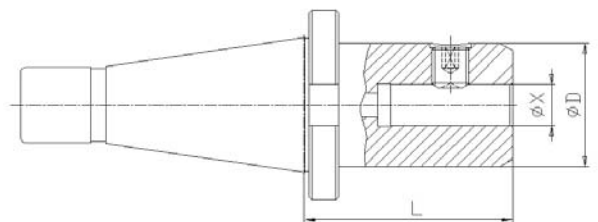


Part Number	Tap Size	ØX	L	ØD
SK30-WE6-L40	ISO 30	6	40	25
SK30-WE8-L40	ISO 30	8	40	28
SK30-WE10-L40	ISO 30	10	40	35
SK30-WE12-L40	ISO 30	12	40	42
SK30-WE14-L40	ISO 30	14	40	44
SK30-WE16-L50	ISO 30	16	50	48
SK30-WE18-L50	ISO 30	18	50	50
SK30-WE20-L63	ISO 30	20	63	52
SK30-WE25-L87	ISO 30	25	87	65
SK40-WE6-L50	ISO 40	6	50	25
SK40-WE8-L50	ISO 40	8	50	28
SK40-WE10-L50	ISO 40	10	50	35
SK40-WE12-L50	ISO 40	12	50	42
SK40-WE14-L50	ISO 40	14	50	44
SK40-WE16-L50	ISO 40	16	50	48
SK40-WE20-L65	ISO 40	20	65	52
SK40-WE25-L80	ISO 40	25	80	65
SK40-WE32-L80	ISO 40	32	80	72
SK40-WE40-L90	ISO 40	40	90	90
SK50-WE8-L50	ISO 50	8	50	28
SK50-WE10-L50	ISO 50	10	50	35
SK50-WE12-L50	ISO 50	12	50	42
SK50-WE16-L50	ISO 50	16	50	48
SK50-WE20-L63	ISO 50	20	63	52
SK50-WE25-L80	ISO 50	25	80	65
SK50-WE32-L80	ISO 50	32	80	72
SK50-WE40-L93	ISO 50	40	93	90

### SK-WE

ISO 30 AVAILABLE ON DEMAND - END MILL HOLDERS PROVIDED WITH SET SCREW(S)

ISO 30 DISPONIBILE SU RICHIESTA - MANDRINO FORNITO DI VITE/1



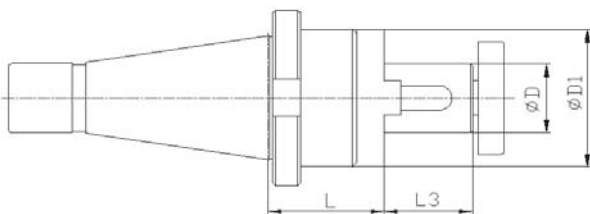
# DIN 2080

**NEW**

## COMBI SHELL MILL HOLDERS

### PORTAFRESA COMBINATO UNIVERSALE

Part Number	Tap Size	ØD	ØD1	L	L3
SK30-C16-L50	ISO 30	16	32	50	17
SK30-C22-L50	ISO 30	22	40	50	19
SK30-C27-L50	ISO 30	27	48	50	21
SK30-C32-L50	ISO 30	32	58	50	24
SK40-C13-L52	ISO 40	13	28	52	12
SK40-C16-L52	ISO 40	16	32	52	17
SK40-C16-L90	ISO 40	16	32	90	17
SK40-C22-L52	ISO 40	22	40	52	19
SK40-C22-L90	ISO 40	22	40	90	19
SK40-C27-L52	ISO 40	27	48	52	21
SK40-C27-L90	ISO 40	27	48	90	21
SK40-C32-L52	ISO 40	32	58	52	24
SK40-C32-L100	ISO 40	32	58	100	24
SK40-C40-L52	ISO 40	40	70	52	27
SK40-C40-L100	ISO 40	40	70	100	27
SK50-C16-L55	ISO 50	16	32	55	17
SK50-C16-L100	ISO 50	16	32	100	17
SK50-C22-L55	ISO 50	22	40	55	19
SK50-C22-L100	ISO 50	22	40	100	19
SK50-C27-L55	ISO 50	27	48	55	21
SK50-C27-L100	ISO 50	27	48	100	21
SK50-C32-L55	ISO 50	32	58	55	24
SK50-C32-L100	ISO 50	32	58	100	24
SK50-C40-L55	ISO 50	40	70	55	27
SK50-C40-L100	ISO 50	40	70	100	27
SK50-C50-L55	ISO 50	50	90	55	30



**SK-C**

DIN 6358/B - SHELL MILL HOLDERS PROVIDED WITH ARBOR SCREW,  
FEATHER KEY AND DRIVE RING

DIN 6358/B - MANDRINO FORNITO DI VITE DI SERRAGGIO, ANELLO DI  
TRASCINAMENTO E LINGUETTA

# DIN 2080

## SHELL MILL HOLDERS *PORTAFRESA FISSO*

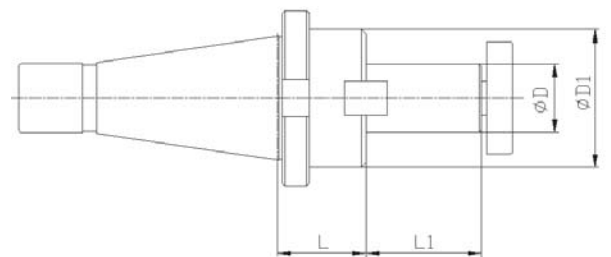
**NEW**

Part Number	Tap Size	ØD	ØD1	L	L1
SK40-S16-L35	ISO 40	16	32	35	17
SK40-S16-L90	ISO 40	16	32	90	17
SK40-S22-L35	ISO 40	22	40	35	19
SK40-S22-L90	ISO 40	22	40	90	19
SK40-S27-L35	ISO 40	27	48	35	21
SK40-S27-L90	ISO 40	27	48	90	21
SK40-S32-L48	ISO 40	32	58	48	24
SK40-S32-L90	ISO 40	32	58	90	24
SK40-S40-L54	ISO 40	40	70	54	27
SK40-S40-L90	ISO 40	40	70	90	27
SK50-S16-L45	ISO 50	16	32	45	17
SK50-S16-L110	ISO 50	16	32	110	17
SK50-S22-L45	ISO 50	22	40	45	19
SK50-S22-L110	ISO 50	22	40	110	19
SK50-S27-L40	ISO 50	27	48	40	21
SK50-S27-L110	ISO 50	27	48	110	21
SK50-S32-L46	ISO 50	32	58	46	24
SK50-S32-L110	ISO 50	32	58	110	24
SK50-S40-L52	ISO 50	40	70	52	27
SK50-S40-L110	ISO 50	40	70	110	27

### SK-SM

FOR HIGH SPEED OPERATIONS - SHELL MILL HOLDERS PROVIDED WITH ARBOR  
SCREW AND DRIVE RING

*PER LAVORAZIONI AD ALTA VELOCITA' - MANDRINO FORNITO DI VITE DI  
SERRAGGIO E TASSELLI DI TRASCINAMENTO*



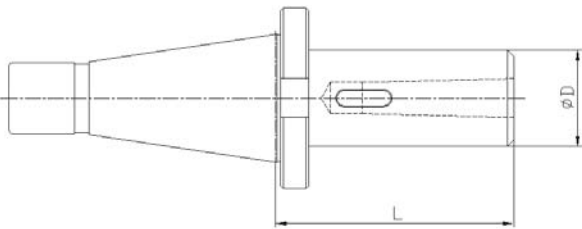


# DIN 2080

**NEW**

MORSE TAPER ADAPTORS FOR DRILLS WITH FLAT TANG  
*RIDUZIONE A CONO MORSE PER PUNTE CON TENONE*

Part Number	Tap Size	Size	ØD	L
SK40-CMB1-L50	ISO 40	CM 1	25	50
SK40-CMB2-L50	ISO 40	CM 2	32	50
SK40-CMB3-L65	ISO 40	CM 3	40	65
SK40-CMB4-L95	ISO 40	CM 4	48	95
SK50-CMB2-L60	ISO 50	CM 2	32	60
SK50-CMB3-L65	ISO 50	CM 3	40	65
SK50-CMB4-L70	ISO 50	CM 4	48	70
SK50-CMB5-L105	ISO 50	CM 5	70	105



**SK-CMB**

FOR MORSE TAPER DIN 228B - ISO 30 AVAILABLE ON DEMAND

*PER CONO MORSE DIN 228B - ISO 30 DISPONIBILE SU RICHIESTA*

# DIN 2080

MORSE TAPER ADAPTORS FOR MILLS WITH THREAD  
*RIDUZIONE A CONO MORSE PER FRESE CON ATTACCO  
FILETTATO*

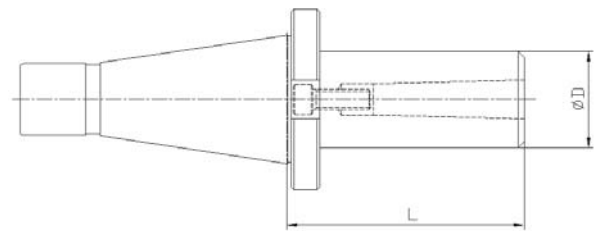
**NEW**

Part Number	Tap Size	Size	ØD	L
SK40-CMA1-L50	ISO 40	CM 1	25	50
SK40-CMA2-L50	ISO 40	CM 2	32	50
SK40-CMA3-L65	ISO 40	CM 3	40	65
SK40-CMA4-L95	ISO 40	CM 4	48	95
SK50-CMA2-L60	ISO 50	CM 2	32	60
SK50-CMA3-L65	ISO 50	CM 3	40	65
SK50-CMA4-L70	ISO 50	CM 4	48	70
SK50-CMA5-L105	ISO 50	CM 5	70	105

## SK-CMA

FOR MORSE TAPER DIN 228A - CHUCK PROVIDED WITH SCREW

*PER CONO MORSE DIN 228A - MANDRINO FORNITO DI VITE*



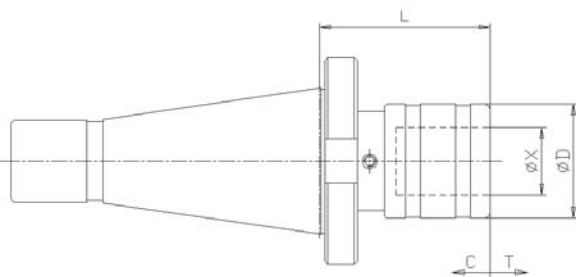
# DIN 2080



## TENSION/COMPRESSION TAP HOLDERS

*MANDRINO COMPENSATO ASSIALMENTE*

Part Number	Size	Tap Size	ØD	L	ØX	C	T
SK30-TC1-L59	1 - M3÷M12	ISO 30	36	59	19	7,5	7,5
SK30-TC2-L97	2 - M8÷M20	ISO 30	53	97	31	12,5	12,5
SK40-TC1-L50	1 - M3÷M12	ISO 40	36	50	19	7,5	7,5
SK40-TC2-L78	2 - M8÷M20	ISO 40	53	78	31	12,5	12,5
SK40-TC3-L143	3 - M14÷M33	ISO 40	78	143	48	20	20
SK40-TC4-L157	4 - M22÷M48	ISO 40	96	157	60	22,5	22,5
SK50-TC1-L57	1 - M3÷M12	ISO 50	36	57	19	9	9
SK50-TC2-L80	2 - M8÷M20	ISO 50	53	80	31	12,5	12,5
SK50-TC3-L130	3 - M14÷M33	ISO 50	78	130	48	20	20
SK50-TC4-L144	4 - M22÷M48	ISO 50	96	144	60	22,5	22,5
SK50-TC5-L209	5 - M33÷M68	ISO 50	130	209	78	30	30
SK60-TC5-L170	5 - M33÷M68	ISO 60	130	170	78	30	30



**SK-TC**

MONOBLOC DESIGN - QUICK CHANGE TAPPING CHUCKS

*INTEGRALE - MANDRINI A CAMBIO RAPIDO*

# DIN 2080

## RIGID TAP HOLDERS MANDRINO RIGIDO

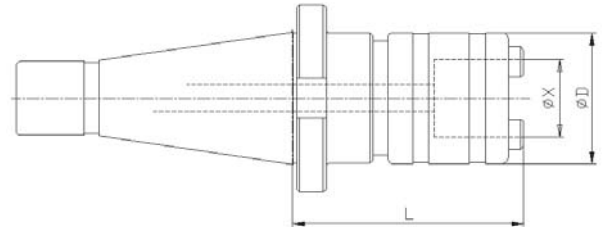
**NEW**

Part Number	Size	Tap Size	ØD	L	ØX
SK30-R1-L50C	1 - M3÷M12	ISO 30	33	50	19
SK30-R2-L73C	2 - M8÷M20	ISO 30	50	73	31
SK40-R1-L52C	1 - M3÷M12	ISO 40	33	52	19
SK40-R2-L74C	2 - M8÷M20	ISO 40	50	74	31
SK50-R1-L55C	1 - M3÷M12	ISO 50	33	55	19
SK50-R2-L78C	2 - M8÷M20	ISO 50	50	78	31

### SK-R

WITH CENTRAL COOLANT FLOW - MAX COOLANT PRESSURE 50 BAR

CON PASSAGGIO REFRIGERANTE CENTRALE - PRESSIONE MASSIMA 50 BAR



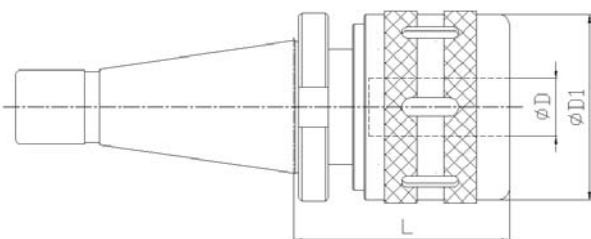
# DIN 2080

**NEW**

## MILLING CHUCK

### *MANDRINO A FORTE SERRAGGIO*

Part Number	Tap Size	ØD	ØD1	L
SK40-SMC32-L83	ISO 40	32	72	83
SK50-SMC32-L85	ISO 50	32	72	85



**SK-SMC**

RUN-OUT ACCURACY 0,010 mm MAX - CHUCK PROVIDED WITH SPANNER

*PRECISIONE DI CONCENTRICITA' 0,010 mm MAX - MANDRINO FORNITO CON CHIAVE DI SERRAGGIO*

# DIN 2080

## TAPER INTEGRAL KEYLESS DRILL CHUCKS *PORTAPUNTA INTEGRALE*

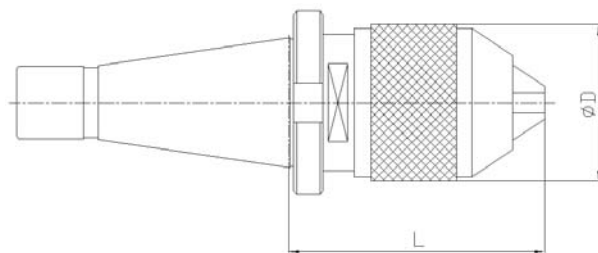
**NEW**

Part Number	Tap Size	Capacity	ØD	L
SK30-SDCPU-08	ISO 30	0 ÷ 8	38	76
SK30-SDCPU-010	ISO 30	0 ÷ 10	43	85
SK40-SDCPU-08	ISO 40	0 ÷ 8	38	69
SK40-SDCPU-010	ISO 40	0 ÷ 10	43	80
SK40-SDCPU-113	ISO 40	1 ÷ 13	48	89
SK40-SDCPU-316	ISO 40	3 ÷ 16	55	101
SK50-SDCPU-113	ISO 50	1 ÷ 13	48	101
SK50-SDCPU-316	ISO 50	3 ÷ 16	55	83

### SK-SDCPU

SHANK DRILL CHUCKS WITH SPANNER - SUPER PRECISION

*MANDRINO FORNITO CON CHIAVE DI SERRAGGIO - ALTA PRECISIONE*



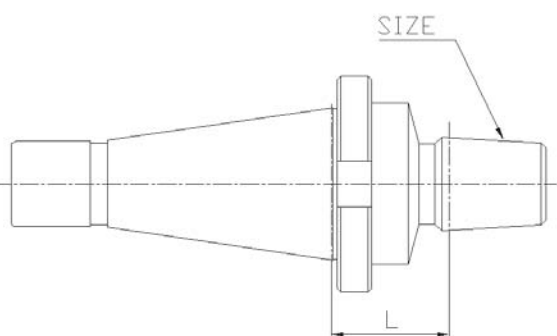
# DIN 2080

**NEW**

## DRILL CHUCK ARBORS

*MANDRINO CON ATTACCO PER MANDRINI AUTOSERRANTI*

Part Number	Tap Size	Size	L
SK40-DCA-B18	ISO 40	B 18	22
SK40-DCA-B16	ISO 40	B 16	22
SK40-DCA-B12	ISO 40	B 12	22
SK50-DCA-B18	ISO 50	B 18	25
SK50-DCA-B16	ISO 50	B 16	25



**SK-DCA**

FOR TAPER DIN 238 - ISO 30 AVAILABLE ON DEMAND

*PER MANDRINI CON ATTACCO DIN 238 - ISO 30 DISPONIBILE A RICHIESTA*

# DIN 2080

## REDUCTION SLEEVES *MANDRINO DI RIDUZIONE*

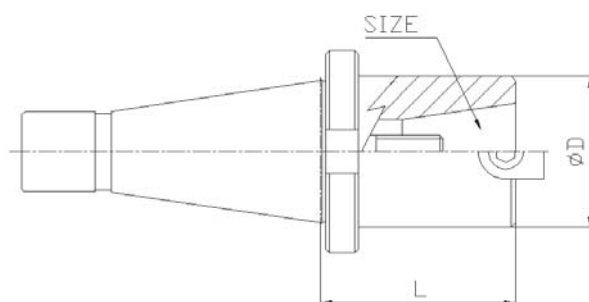
**NEW**

Part Number	Tap Size	Size	ØD	L
SK50-RS40	ISO 50	ISO 40	63	50

### SK-RS

FROM ISO TO ISO TAPER SUPPLIED WITH MOUNTED TIGHTENING BOLT

*DA CONO ISO A CONO ISO FORNITI DI VITE-TIRANTE PER IL BLOCCAGGIO UTENSILI*





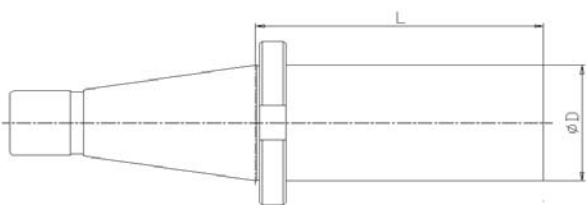
# DIN 2080

**NEW**

BLANK BARS

*STELO TENERO LAVORABILE*

Part Number	Tap Size	ØD	L
SK40-SBB40-L250	ISO 40	40	250
SK40-SBB63-L250	ISO 40	63	250
SK50-SBB80-L320	ISO 50	80	320
SK50-SBB97-L315	ISO 50	97	315



**SK-SBB**

BLANK END HRC 27-31 - BLANK PART CAN BE FINISHED BY THE USER

*DUREZZA PARTE LAVORABILE HRC 27-31 - LA PARTE LAVORABILE PUO' ESSERE FINITA DALL' UTILIZZATORE*

# DIN 2080

MASTERS FOR MODULAR TAP HOLDERS  
*CONO MODULARE*

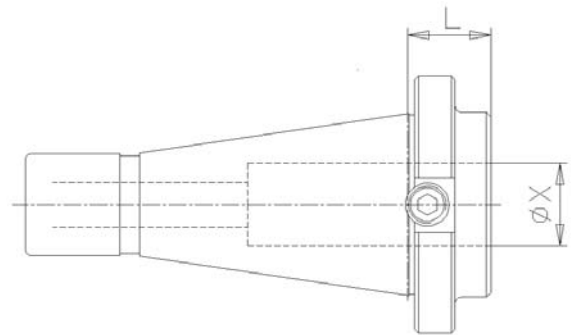
**NEW**

Part Number	Tap Size	ØX	L
SK40-MTH16	ISO 40	16	22
SK40-MTH20	ISO 40	20	22
SK40-MTH25	ISO 40	25	22
SK50-MTH25	ISO 50	25	15
SK50-MTH40	ISO 50	40	15

## SK-MTH

FOR WELDON TAP HOLDERS CENTRAL COOLANT FLOW

*PER MANDRINI WELDON PASSAGGIO REFRIGERANTE CENTRALE*

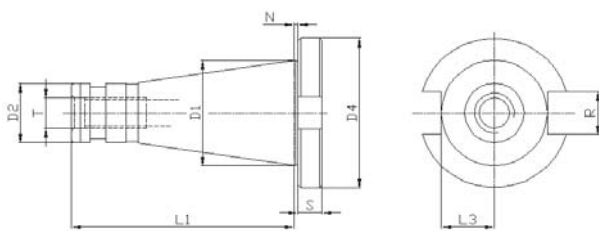


# DIN 2080

## DIMENSIONS

### *DIMENSIONI*

Tap Size	ØD1	ØD2	ØD4	L1	L3	N	R	S	T
ISO 30	31,75	17,4	50	68,4	16,2	1,6	16,1	8	M 12
ISO 40	44,45	25,3	63	93,4	22,5	1,6	16,1	10	M 16
ISO 50	69,85	39,6	97,5	126,8	35,3	3,2	25,7	12	M 24



**DIN 2080**

DIN 2080

*DIN 2080*

**Seinco Components s.r.l.**

Via della Basilica, 2

10122 - Torino - Italy

P.Iva - Vat : 09226290014

Tel. : +39 011 4361658

Fax : +39 011 4361658

e-mail : [sales@seincosrl.com](mailto:sales@seincosrl.com)

<http://www.seincosrl.com>