



② DIN 69871

Italian Tooling System Italian Tooling System
Tooling System Italian Tooling System Ita
System Italian Tooling System Italian Too
alian Tooling System Italian Tooling Syst
Tooling System Italian Tooling System Ita
System Italian Tooling System Italian Too

TC-ERS (Form AD+B)

ER COLLET CHUCKS WITH PRE-BALANCED NUTS

PORTAPINZA ER CON GHIERE PRE-BILANCIATE

2.4

TC-ERSM (Form AD+B)

ER MINI COLLET CHUCKS WITH PRE-BALANCED NUTS

PORTAPINZA ER CON GHIERE MINI PRE-BILANCIATE

2.6

TC-WE (Form AD)

WELDON (DIN 1835 B) END MILL HOLDERS

PORTAFRESE TIPO WELDON (DIN 1835 B)

2.7

TC-C (Form AD)

COMBI SHELL MILL HOLDERS

PORTAFRESA COMBINATO UNIVERSALE

2.8

TC-S (Form AD)

SHELL MILL HOLDERS

PORTAFRESA FISSO

2.10

TC-M (Form AD+B)

SCREW IN END MILL HOLDERS

MANDRINO PER FRESE CON ATTACCO FILETTATO

2.11

TC-CMB (Form AD)

MORSE TAPER ADAPTORS FOR DRILLS WITH FLAT TANG

RIDUZIONE A CONO MORSE PER PUNTE CON TENONE

2.13

TC-CMA (Form A)

MORSE TAPER ADAPTORS FOR MILLS WITH THREAD

RIDUZIONE A CONO MORSE PER FRESE CON ATTACCO FILETTATO

2.14

TC-TC (Form A) TENSION/COMPRESSION TAP HOLDERS <i>MANDRINO COMPENSATO ASSIALMENTE</i>	2.15
TC-ETC (Form A) ENLARGED TENSION/COMPRESSION TAP HOLDERS <i>MANDRINO CON COMPENSAZIONE ASSIALE MAGGIORATA</i>	2.16
TC-R (Form A) RIGID TAP HOLDERS <i>MANDRINO RIGIDO</i>	2.17
TC-TC-C (Form AD) COOLANT-THRU TENSION/COMPRESSION TAP HOLDERS <i>MANDRINO COMPENSATO ASSIALMENTE CON PASSAGGIO REFRIGERANTE</i>	2.18
TCB-TC-C (Form B) COOLANT-THRU TENSION/COMPRESSION TAP HOLDERS <i>MANDRINO COMPENSATO ASSIALMENTE CON PASSAGGIO REFRIGERANTE</i>	2.19
TC-R-C (Form AD) COOLANT-THRU RIGID TAP HOLDERS <i>MANDRINO RIGIDO CON PASSAGGIO REFRIGERANTE</i>	2.20
TC-SHC (Form AD+B) HYDRAULIC CHUCK <i>MANDRINO A BLOCCAGGIO IDRAULICO</i>	2.21
TC-SMC (Form AD) MILLING CHUCK <i>MANDRINO A FORTE SERRAGGIO</i>	2.22

DIN 69871

TC-SSF (Form AD+B)

SHRINK FIT TOOLHOLDERS - STANDARD LENGTH

MANDRINO CON BLOCCAGGIO AD INDUZIONE TERMICA - LUNGHEZZA STANDARD

2.23

TC-SDCPU (Form A)

TAPER INTEGRAL KEYLESS DRILL CHUCKS

PORTAPUNTA INTEGRALE

2.24

TC-DCA (Form A)

DRILL CHUCK ARBORS

MANDRINO CON ATTACCO PER MANDRINI AUTOSERRANTI

2.25

TC-RS (Form A)

REDUCTION SLEEVES

MANDRINO DI RIDUZIONE

2.26

TC-SBB (Form A)

BLANK BARS

STELO TENERO LAVORABILE

2.27

TC-MTH (Form AD)

MASTERS FOR MODULAR TAP HOLDERS

CONO MODULARE

2.28

DIN 69871/A

DIMENSIONS

DIMENSIONI

2.29

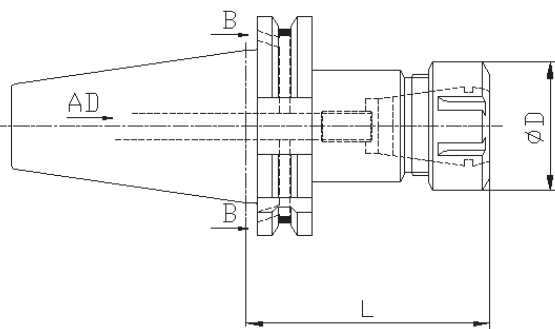
DIN 69871



ER COLLET CHUCKS WITH PRE-BALANCED NUTS *PORTAPINZA ER CON GHIERE PRE-BILANCIATE*

Part Number	Tap Size	Collet	Collet Range	L	ØD
*TC30-ERS16-L63	ISO 30	ER 16	0,5 ÷ 10	63	32
*TC30-ERS16-L100	ISO 30	ER 16	0,5 ÷ 10	100	32
*TC30-ERS20-L63	ISO 30	ER 20	1 ÷ 13	63	35
*TC30-ERS25-L63	ISO 30	ER 25	1 ÷ 16	63	42
*TC30-ERS25-L90	ISO 30	ER 25	1 ÷ 16	90	42
*TC30-ERS32-L63	ISO 30	ER 32	2 ÷ 20	63	50
*TC30-ERS32-L100	ISO 30	ER 32	2 ÷ 20	100	50
TC40-ERS16-L70	ISO 40	ER 16	0,5 ÷ 10	70	32
TC40-ERS16-L100	ISO 40	ER 16	0,5 ÷ 10	100	32
TC40-ERS16-L150	ISO 40	ER 16	0,5 ÷ 10	150	32
TC40-ERS20-L70	ISO 40	ER 20	1 ÷ 13	70	35
TC40-ERS20-L100	ISO 40	ER 20	1 ÷ 13	100	35
TC40-ERS20-L150	ISO 40	ER 20	1 ÷ 13	150	35
TC40-ERS25-L70	ISO 40	ER 25	1 ÷ 16	70	42
TC40-ERS25-L100	ISO 40	ER 25	1 ÷ 16	100	42
TC40-ERS25-L150	ISO 40	ER 25	1 ÷ 16	150	42
TC40-ERS32-L70	ISO 40	ER 32	2 ÷ 20	70	50
TC40-ERS32-L100	ISO 40	ER 32	2 ÷ 20	100	50
TC40-ERS32-L160	ISO 40	ER 32	2 ÷ 20	160	50
TC40-ERS40-L80	ISO 40	ER 40	3 ÷ 26	80	63
TC40-ERS40-L100	ISO 40	ER 40	3 ÷ 26	100	63
TC40-ERS40-L150	ISO 40	ER 40	3 ÷ 26	150	63
TC50-ERS16-L100	ISO 50	ER 16	0,5 ÷ 10	100	32
TC50-ERS16-L160	ISO 50	ER 16	0,5 ÷ 10	160	32

continued / continua



TC-ERS (Form AD+B)

COLLET CHUCKS PROVIDED WITH BACK UP SCREW AND CLAMPING NUT - ON DEMAND PRE-BALANCED G 2,5 OR G 6,3 - *TC30 ONLY FORM A

MANDRINO FORNITO DI VITE DI REGISTRAZIONE E GHIERA - A RICHIESTA PRE-BILANCIATI G 2,5 O G 6,3 - *TC30 SOLO FORMA A

DIN 69871

ER COLLET CHUCKS WITH PRE-BALANCED NUTS *PORTAPINZA ER CON GHIERE PRE-BILANCIATE*

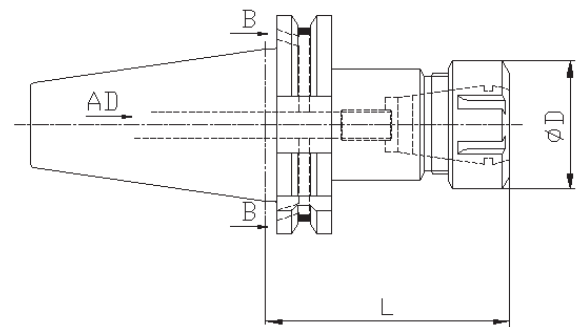


Part Number	Tap Size	Collet	Collet Range	L	ØD
TC50-ERS20-L100	ISO 50	ER 20	1 ÷ 13	100	35
TC50-ERS20-L160	ISO 50	ER 20	1 ÷ 13	160	35
TC50-ERS25-L80	ISO 50	ER 25	1 ÷ 16	80	42
TC50-ERS25-L100	ISO 50	ER 25	1 ÷ 16	100	42
TC50-ERS25-L160	ISO 50	ER 25	1 ÷ 16	160	42
TC50-ERS32-L80	ISO 50	ER 32	2 ÷ 20	80	50
TC50-ERS32-L100	ISO 50	ER 32	2 ÷ 20	100	50
TC50-ERS32-L160	ISO 50	ER 32	2 ÷ 20	160	50
TC50-ERS40-L80	ISO 50	ER 40	3 ÷ 26	80	63
TC50-ERS40-L100	ISO 50	ER 40	3 ÷ 26	100	63
TC50-ERS40-L160	ISO 50	ER 40	3 ÷ 26	160	63

TC-ERS (Form AD+B)

COLLET CHUCKS PROVIDED WITH BACK UP SCREW AND CLAMPING NUT - ON DEMAND PRE-BALANCED G 2,5 OR G 6,3 - *TC30 ONLY FORM A

*MANDRINO FORNITO DI VITE DI REGISTRAZIONE E GHIERA - A RICHIESTA PRE-BILANCIATI G 2,5 O G 6,3 - *TC30 SOLO FORMA A*



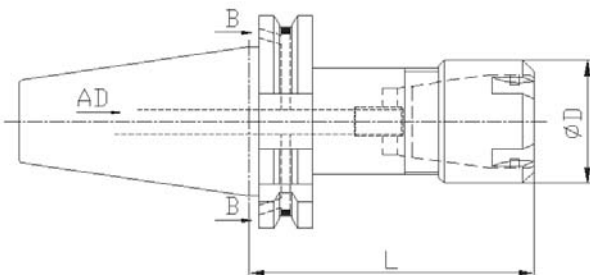
DIN 69871



ER MINI COLLET CHUCKS WITH PRE-BALANCED NUTS

PORTAPINZA ER CON GHIERE MINI PRE-BILANCIATE

Part Number	Tap Size	Collet	Collet Range	L	ØD
TC40-ERS11M-L100	ISO 40	ER 11 MINI	0,5 ÷ 7	100	16
TC40-ERS11M-L125	ISO 40	ER 11 MINI	0,5 ÷ 7	125	16
TC40-ERS11M-L150	ISO 40	ER 11 MINI	0,5 ÷ 7	150	16
TC40-ERS16M-L100	ISO 40	ER 16 MINI	0,5 ÷ 10	100	22
TC40-ERS16M-L130	ISO 40	ER 16 MINI	0,5 ÷ 10	130	22
TC40-ERS16M-L150	ISO 40	ER 16 MINI	0,5 ÷ 10	150	22
TC40-ERS20M-L100	ISO 40	ER 20 MINI	1 ÷ 13	100	28
TC40-ERS20M-L130	ISO 40	ER 20 MINI	1 ÷ 13	130	28
TC40-ERS20M-L150	ISO 40	ER 20 MINI	1 ÷ 13	150	28
TC40-ERS25M-L100	ISO 40	ER 25 MINI	1 ÷ 16	100	35
TC40-ERS25M-L150	ISO 40	ER 25 MINI	1 ÷ 16	150	35
TC40-ERS25M-L200	ISO 40	ER 25 MINI	1 ÷ 16	200	35
TC50-ERS16M-L100	ISO 50	ER 16 MINI	0,5 ÷ 10	100	22
TC50-ERS16M-L160	ISO 50	ER 16 MINI	0,5 ÷ 10	160	22
TC50-ERS25M-L160	ISO 50	ER 25 MINI	1 ÷ 16	160	35



TC-ERSM (Form AD+B)

COLLET CHUCKS PROVIDED WITH BACK UP SCREW AND CLAMPING NUT - ON DEMAND PRE-BALANCED G 2,5 OR G 6,3

MANDRINO FORNITO DI VITE DI REGISTRAZIONE E GHIERA - A RICHIESTA PRE-BILANCIATI G 2,5 O G 6,3

DIN 69871

WELDON (DIN 1835 B) END MILL HOLDERS PORTAFRESE TIPO WELDON (DIN 1835 B)

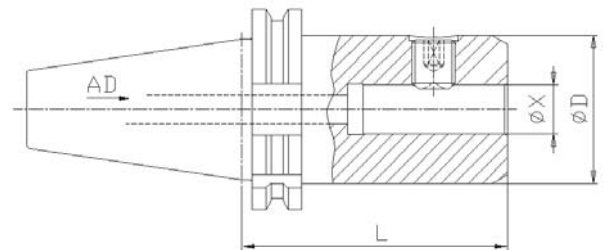


Part Number	Tap Size	ØX	L	ØD
TC40-WE6-L50	ISO 40	6	50	25
TC40-WE8-L50	ISO 40	8	50	28
TC40-WE10-L50	ISO 40	10	50	35
TC40-WE12-L50	ISO 40	12	50	42
TC40-WE14-L50	ISO 40	14	50	44
TC40-WE16-L63	ISO 40	16	63	48
TC40-WE18-L63	ISO 40	18	63	50
TC40-WE20-L63	ISO 40	20	63	52
TC40-WE25-L100	ISO 40	25	100	65
TC40-WE32-L100	ISO 40	32	100	72
TC40-WE40-L120	ISO 40	40	120	80
TC50-WE8-L65	ISO 50	8	65	28
TC50-WE10-L70	ISO 50	10	70	35
TC50-WE12-L75	ISO 50	12	75	42
TC50-WE14-L63	ISO 50	14	63	44
TC50-WE16-L80	ISO 50	16	80	48
TC50-WE18-L63	ISO 50	18	63	50
TC50-WE20-L80	ISO 50	20	80	52
TC50-WE25-L80	ISO 50	25	80	65
TC50-WE32-L105	ISO 50	32	105	72
TC50-WE40-L120	ISO 50	40	120	80

TC-WE (Form AD)

PRE-BALANCED : ISO 40 = G 2,5 AT 15,000 RPM / ISO 50 = G 2,5 AT 12,000 RPM - END MILL HOLDERS PROVIDED WITH SET SCREW(S)

PRE-BILANCIATO : ISO 40 = G 2,5 A 15,000 GIRI / ISO 50 = G 2,5 A 12,000 GIRI - MANDRINO FORNITO DI VITE/1



DIN 69871

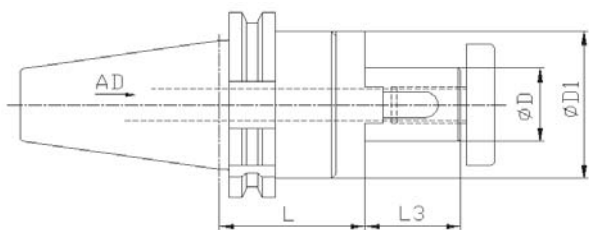


COMBI SHELL MILL HOLDERS

PORTAFRESA COMBINATO UNIVERSALE

Part Number	Tap Size	ØD	ØD1	L	L3
TC40-C16-L55	ISO 40	16	32	55	17
TC40-C16-L100	ISO 40	16	32	100	17
TC40-C16-L160	ISO 40	16	32	160	17
TC40-C22-L55	ISO 40	22	40	55	19
TC40-C22-L100	ISO 40	22	40	100	19
TC40-C22-L160	ISO 40	22	40	160	19
TC40-C27-L55	ISO 40	27	48	55	21
TC40-C27-L100	ISO 40	27	48	100	21
TC40-C27-L160	ISO 40	27	48	160	21
TC40-C32-L60	ISO 40	32	58	60	24
TC40-C32-L100	ISO 40	32	58	100	24
TC40-C32-L160	ISO 40	32	58	160	24
TC40-C40-L60	ISO 40	40	70	60	27
TC40-C40-L100	ISO 40	40	70	100	27
TC40-C40-L160	ISO 40	40	70	160	27
TC50-C16-L55	ISO 50	16	32	55	17
TC50-C16-L100	ISO 50	16	32	100	17
TC50-C16-L160	ISO 50	16	32	160	17
TC50-C22-L55	ISO 50	22	40	55	19
TC50-C22-L100	ISO 50	22	40	100	19
TC50-C22-L160	ISO 50	22	40	160	19
TC50-C27-L55	ISO 50	27	48	55	21
TC50-C27-L100	ISO 50	27	48	100	21
TC50-C27-L160	ISO 50	27	48	160	21

continued / continua



TC-C (Form AD)

DIN 6358/B - SHELL MILL HOLDERS PROVIDED WITH ARBOR SCREW,
FEATHER KEY AND DRIVE RING

*DIN 6358/B - MANDRINO FORNITO DI VITE DI SERRAGGIO, ANELLO DI
TRASCINAMENTO E LINGUETTA*

DIN 69871

COMBI SHELL MILL HOLDERS

PORTAFRESA COMBINATO UNIVERSALE

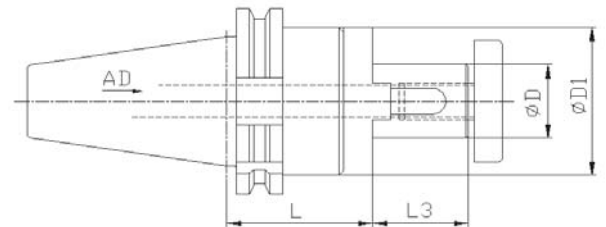


Part Number	Tap Size	ØD	ØD1	L	L3
TC50-C32-L55	ISO 50	32	58	55	24
TC50-C32-L100	ISO 50	32	58	100	24
TC50-C32-L160	ISO 50	32	58	160	24
TC50-C40-L55	ISO 50	40	70	55	27
TC50-C40-L100	ISO 50	40	70	100	27
TC50-C40-L160	ISO 50	40	70	160	27

TC-C (Form AD)

DIN 6358/B - SHELL MILL HOLDERS PROVIDED WITH ARBOR SCREW,
FEATHER KEY AND DRIVE RING

*DIN 6358/B - MANDRINO FORNITO DI VITE DI SERRAGGIO, ANELLO DI
TRASCINAMENTO E LINGUETTA*



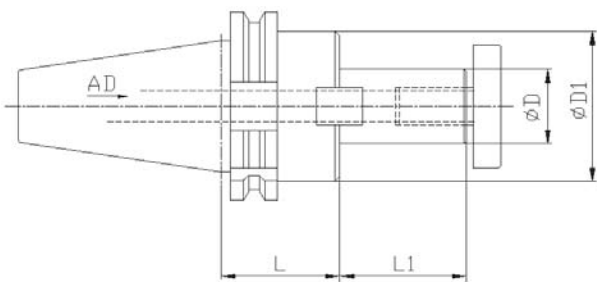
DIN 69871

SHELL MILL HOLDERS

PORTAFRESA FISSO



Part Number	Tap Size	ØD	ØD1	L	L1
TC40-S16-L44	ISO 40	16	38	44	17
TC40-S16-L100	ISO 40	16	38	100	17
TC40-S16-L160	ISO 40	16	38	160	17
TC40-S22-L55	ISO 40	22	48	55	19
TC40-S22-L100	ISO 40	22	48	100	19
TC40-S22-L160	ISO 40	22	48	160	19
TC40-S27-L60	ISO 40	27	58	60	21
TC40-S27-L100	ISO 40	27	58	100	21
TC40-S27-L160	ISO 40	27	58	160	21
TC40-S32-L60	ISO 40	32	66	60	24
TC40-S32-L100	ISO 40	32	66	100	24
TC40-S32-L160	ISO 40	32	66	160	24
TC40-S40-L60	ISO 40	40	80	60	27
*TC40-S40-L100	ISO 40	40	80	100	27
*TC40-S40-L160	ISO 40	40	80	160	27
*TC50-S16-L45	ISO 50	16	38	45	17
TC50-S22-L45	ISO 50	22	48	45	19
TC50-S27-L65	ISO 50	27	58	65	21
TC50-S32-L65	ISO 50	32	66	65	24
TC50-S40-L68	ISO 50	40	80	68	27



TC-S (Form AD)

SHELL MILL HOLDERS PROVIDED WITH ARBOR SCREW AND DRIVE RING -
*ONLY FORM A

MANDRINO FORNITO DI VITE DI SERRAGGIO E TASSELLI DI TRASCINAMENTO -
*SOLO FORMA A

DIN 69871

SCREW IN END MILL HOLDERS

MANDRINO PER FRESE CON ATTACCO FILETTATO

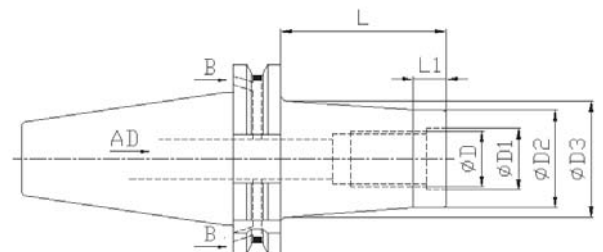
NEW

Part Number	Tap Size	ØD	ØD1	ØD2	ØD3	L	L1
TC40-M6-L36	ISO 40	M6	6,5	10	13	36	10
TC40-M6-L56	ISO 40	M6	6,5	10	20	56	10
TC40-M6-L76	ISO 40	M6	6,5	10	23	76	10
TC40-M8-L36	ISO 40	M8	8,5	13	15	36	10
TC40-M8-L56	ISO 40	M8	8,5	13	23	56	10
TC40-M8R-L56	ISO 40	M8	8,5	13	15	56	10
TC40-M8-L76	ISO 40	M8	8,5	13	23	76	10
TC40-M8R-L76	ISO 40	M8	8,5	13	15	76	10
TC40-M8-L96	ISO 40	M8	8,5	13	25	96	10
TC40-M8R-L96	ISO 40	M8	8,5	13	15	96	10
TC40-M10-L36	ISO 40	M10	10,5	18	20	36	10
TC40-M10-L56	ISO 40	M10	10,5	18	25	56	10
TC40-M10R-L56	ISO 40	M10	10,5	18	20	56	10
TC40-M10-L76	ISO 40	M10	10,5	18	28	76	10
TC40-M10R-L76	ISO 40	M10	10,5	18	20	76	10
TC40-M10-L96	ISO 40	M10	10,5	18	28	96	10
TC40-M10R-L96	ISO 40	M10	10,5	18	20	96	10
TC40-M12-L36	ISO 40	M12	12,5	21	24	36	10
TC40-M12-L56	ISO 40	M12	12,5	21	24	56	10
TC40-M12-L76	ISO 40	M12	12,5	21	31	76	10
TC40-M12R-L76	ISO 40	M12	12,5	21	24	76	10
TC40-M12-L96	ISO 40	M12	12,5	21	31	96	10
TC40-M12R-L96	ISO 40	M12	12,5	21	24	96	10
TC40-M16-L36	ISO 40	M16	17	29	34	36	10
continued / continua							

TC-M (Form AD+B)

PRE-BALANCED : ISO 40 = G 2,5 AT 20,000 RPM / ISO 50 = G 6,3 AT 12,000 RPM - ISO TAPER FORM AD+B

PRE-BILANCIATO : ISO 40 = G 2,5 A 20,000 GIRI / ISO 50 = G 6,3 A 12,000 GIRI - CONO ISO FORMA AD+B



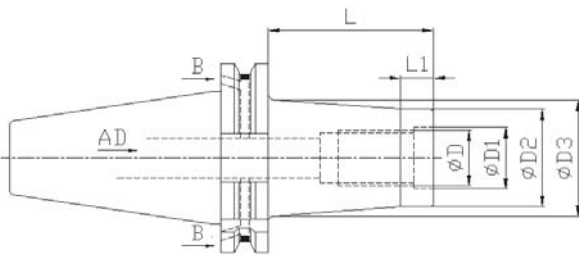
DIN 69871

NEW

SCREW IN END MILL HOLDERS

MANDRINO PER FRESE CON ATTACCO FILETTATO

Part Number	Tap Size	ØD	ØD1	ØD2	ØD3	L	L1
TC40-M16R-L36	ISO 40	M16	17	29	31	36	10
TC40-M16-L56	ISO 40	M16	17	29	34	56	10
TC40-M16R-L56	ISO 40	M16	17	29	31	56	10
TC40-M16-L76	ISO 40	M16	17	29	34	76	10
TC40-M16R-L76	ISO 40	M16	17	29	31	76	10
TC40-M16-L96	ISO 40	M16	17	29	39	96	10
TC40-M16R-L96	ISO 40	M16	17	29	31	96	10
TC40-M16-L126	ISO 40	M16	17	29	39	126	10
TC40-M16R-L126	ISO 40	M16	17	29	31	126	10
TC50-M12-L66	ISO 50	M12	12,5	21	32	66	10
TC50-M12-L116	ISO 50	M12	12,5	21	32	116	10
TC50-M12-L166	ISO 50	M12	12,5	21	36	166	10
TC50-M12-L216	ISO 50	M12	12,5	21	42	216	10
TC50-M16-L66	ISO 50	M16	17	29	36	66	10
TC50-M16-L116	ISO 50	M16	17	29	40	116	10
TC50-M16-L166	ISO 50	M16	17	29	42	166	10
TC50-M16-L216	ISO 50	M16	17	29	44	216	10



TC-M (Form AD+B)

PRE-BALANCED : ISO 40 = G 2,5 AT 20,000 RPM / ISO 50 = G 6,3 AT 12,000 RPM - ISO TAPER FORM AD+B

PRE-BILANCIATO : ISO 40 = G 2,5 A 20,000 GIRI / ISO 50 = G 2,5 A 12,000 GIRI - CONO ISO FORMA AD+B

DIN 69871

MORSE TAPER ADAPTORS FOR DRILLS WITH FLAT TANG
RIDUZIONE A CONO MORSE PER PUNTE CON TENONE

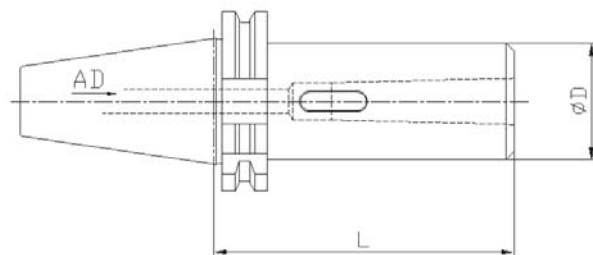


Part Number	Tap Size	Size	ØD	L
TC40-CMB2-L50	ISO 40	CM 2	32	50
TC40-CMB3-L70	ISO 40	CM 3	40	70
TC40-CMB4-L95	ISO 40	CM 4	48	95
TC50-CMB2-L60	ISO 50	CM 2	32	60
TC50-CMB3-L65	ISO 50	CM 3	40	65
TC50-CMB4-L95	ISO 50	CM 4	48	95
TC50-CMB5-L105	ISO 50	CM 5	63	105

TC-CMB (Form AD)

FOR MORSE TAPER DIN 228B - FORM AD+B ON DEMAND

PER CONO MORSE DIN 228B - FORMA AD+B A RICHIESTA

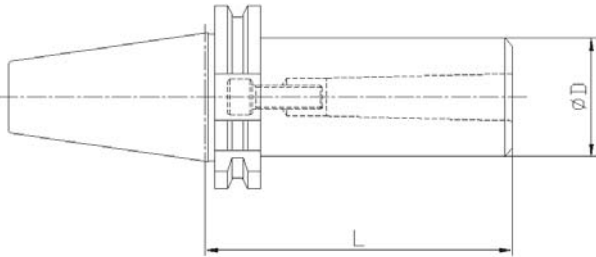


DIN 69871



MORSE TAPER ADAPTORS FOR MILLS WITH THREAD
RIDUZIONE A CONO MORSE PER FRESE CON ATTACCO FILETTATO

Part Number	Tap Size	Size	ØD	L
TC40-CMA2-L65	ISO 40	CM 2	32	65
TC40-CMA3-L75	ISO 40	CM 3	40	75
TC40-CMA4-L100	ISO 40	CM 4	48	100
TC50-CMA2-L60	ISO 50	CM 2	32	60
TC50-CMA3-L75	ISO 50	CM 3	40	75
TC50-CMA4-L100	ISO 50	CM 4	48	100
TC50-CMA5-L130	ISO 50	CM 5	63	130



TC-CMA (Form A)

FOR MORSE TAPER DIN 228A - CHUCK PROVIDED WITH SCREW

PER CONO MORSE DIN 228A - MANDRINO FORNITO DI VITE

DIN 69871

TENSION/COMPRESSION TAP HOLDERS MANDRINO COMPENSATO ASSIALMENTE

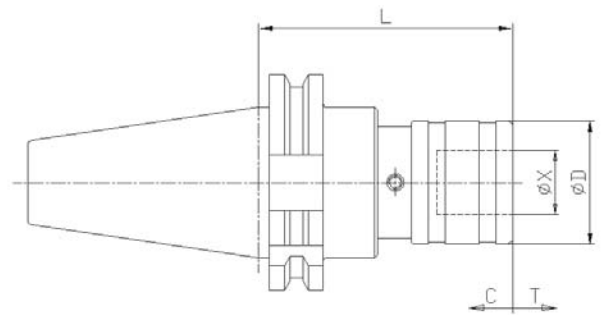


Part Number	Size	Tap Size	ØD	L	ØX	C	T
TC30-TC0-L56	0 - M1÷M10	ISO 30	26	56	13	6,5	6,5
TC30-TC1-L60	1 - M3÷M12	ISO 30	36	60	19	9	9
TC30-TC2-L101	2 - M8÷M20	ISO 30	53	101	31	15	15
TC40-TC0-L75	0 - M1÷M10	ISO 40	26	75	13	6,5	6,5
TC40-TC1-L60	1 - M3÷M12	ISO 40	36	60	19	7,5	7,5
TC40-TC2-L98	2 - M8÷M20	ISO 40	53	98	31	12,5	12,5
TC40-TC3-L150	3 - M14÷M33	ISO 40	78	150	48	20	20
TC40-TC4-L166	4 - M22÷M48	ISO 40	96	166	60	22,5	22,5
TC45-TC1-L60	1 - M3÷M12	ISO 45	36	60	19	7,5	7,5
TC45-TC2-L84	2 - M8÷M20	ISO 45	53	84	31	12,5	12,5
TC45-TC3-L146	3 - M14÷M33	ISO 45	78	146	48	20	20
TC45-TC4-L161	4 - M22÷M48	ISO 45	96	161	60	22,5	22,5
TC50-TC0-L75	0 - M1÷M10	ISO 50	26	75	13	6,5	6,5
TC50-TC1-L74	1 - M3÷M12	ISO 50	36	74	19	7,5	7,5
TC50-TC2-L84	2 - M8÷M20	ISO 50	53	84	31	12,5	12,5
TC50-TC3-L139	3 - M14÷M33	ISO 50	78	139	48	20	20
TC50-TC4-L153	4 - M22÷M48	ISO 50	96	153	60	22,5	22,5

TC-TC (Form A)

QUICK CHANGE TAPPING CHUCKS

MANDRINI A CAMBIO RAPIDO

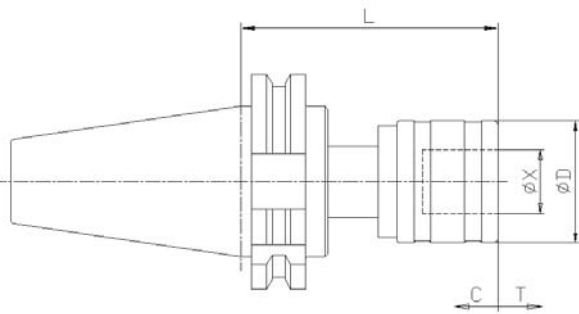


DIN 69871

NEW

ENLARGED TENSION/COMPRESSION TAP HOLDERS *MANDRINO CON COMPENSAZIONE ASSIALE MAGGIORATA*

Part Number	Size	Tap Size	ØD	L	ØX	C	T
TC40-ETC0-L67	0 - M1+M10	ISO 40	26	67	13	15	13
TC40-ETC1-L75	1 - M3+M12	ISO 40	36	75	19	20	15
TC40-ETC2-L104	2 - M8+M20	ISO 40	53	104	31	25	20
TC45-ETC0-L63	0 - M1+M10	ISO 45	26	63	13	15	13
TC45-ETC1-L71	1 - M3+M12	ISO 45	36	71	19	20	15
TC45-ETC2-L100	2 - M8+M20	ISO 45	53	100	31	25	20
TC50-ETC0-L63	0 - M1+M10	ISO 50	26	63	13	15	13
TC50-ETC1-L71	1 - M3+M12	ISO 50	36	71	19	20	15
TC50-ETC2-L100	2 - M8+M20	ISO 50	53	100	31	25	20



TC-ETC (Form A)

QUICK CHANGE TAPPING CHUCKS - ISO 45 AVAILABLE ON DEMAND

MANDRINI A CAMBIO RAPIDO - ISO 45 DISPONIBILE A RICHIESTA

DIN 69871

RIGID TAP HOLDERS *MANDRINO RIGIDO*

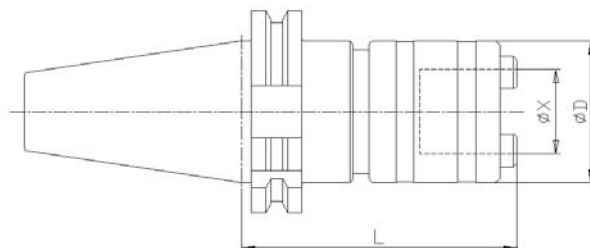


Part Number	Size	Tap Size	ØD	L	ØX
TC40-R1-L72	1 - M3÷M12	ISO 40	32	72	19
TC40-R2-L89	2 - M8÷M20	ISO 40	50	89	31
TC40-R3-L118	3 - M14÷M33	ISO 40	72	118	48
TC45-R1-L72	1 - M3÷M12	ISO 45	32	72	19
TC45-R2-L89	2 - M8÷M20	ISO 45	50	89	31
TC45-R3-L118	3 - M14÷M33	ISO 45	72	118	48
TC50-R1-L72	1 - M3÷M12	ISO 50	32	72	19
TC50-R2-L89	2 - M8÷M20	ISO 50	50	89	31
TC50-R3-L118	3 - M14÷M33	ISO 50	72	118	48

TC-R (Form A)

QUICK CHANGE TAPPING CHUCKS - SIZE 4 AVAILABLE ON DEMAND

MANDRINI A CAMBIO RAPIDO - GRANDEZZA 4 DISPONIBILE A RICHIESTA

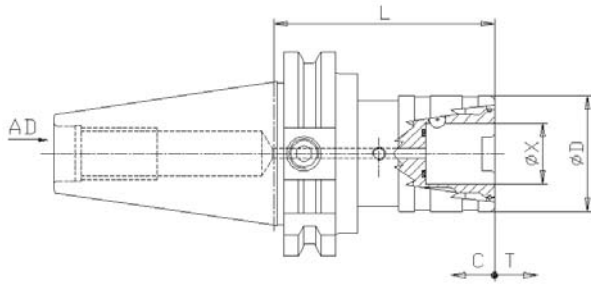


DIN 69871



COOLANT-THRU TENSION/COMPRESSION TAP HOLDERS *MANDRINO COMPENSATO ASSIALMENTE CON PASSAGGIO REFRIGERANTE*

Part Number	Size	Tap Size	ØD	L	C	T	ØX
TC40-TC1-L97C	1 - M3÷M12	ISO 40	39	97	7,5	7,5	19
TC40-TC2-L133C	2 - M8÷M20	ISO 40	53	133	10	10	31
TC40-TC3-L242C	3 - M14÷M33	ISO 40	75	242	13	18	48
TC50-TC1-L97C	1 - M3÷M12	ISO 50	39	97	7,5	7,5	19
TC50-TC2-L133C	2 - M8÷M20	ISO 50	53	133	10	10	31
TC50-TC3-L202C	3 - M14÷M33	ISO 50	75	202	13	18	48



TC-TC-C (Form AD)

MODULAR WITH WELDON INTERFACE (DIN 1835 B+E) - MAX COOLANT
PRESSURE 50 BAR - CENTRAL COOLANT FLOW

*SISTEMA MODULARE - PRESSIONE MASSIMA 50 BAR - PASSAGGIO
REFRIGERANTE CENTRALE*

DIN 69871

COOLANT-THRU TENSION/COMPRESSION TAP HOLDERS
MANDRINO COMPENSATO ASSIALMENTE CON PASSAGGIO
REFRIGERANTE

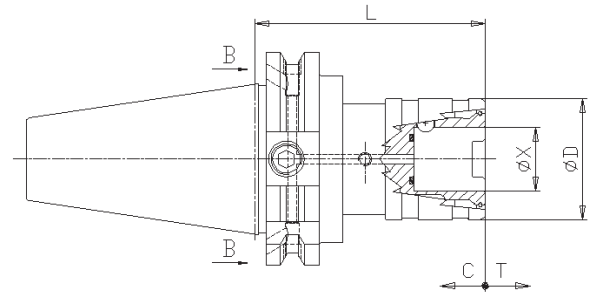


Part Number	Size	Tap Size	ØD	L	C	T	ØX
TC40B-TC1-L97C	1 - M3÷M12	ISO 40	39	97	7,5	7,5	19
TC40B-TC2-L133C	2 - M8÷M20	ISO 40	53	133	10	10	31
TC40B-TC3-L242C	3 - M14÷M33	ISO 40	75	242	13	18	48
TC50B-TC1-L97C	1 - M3÷M12	ISO 50	39	97	7,5	7,5	19
TC50B-TC2-L133C	2 - M8÷M20	ISO 50	53	133	10	10	31
TC50B-TC3-L202C	3 - M14÷M33	ISO 50	75	202	13	18	48

TCB-TC-C (Form B)

MODULAR WITH WELDON INTERFACE (DIN 1835 B+E) - MAX COOLANT
 PRESSURE 50 BAR - LATERAL COOLANT FLOW

*SISTEMA MODULARE - PRESSIONE MASSIMA 50 BAR - PASSAGGIO
 REFRIGERANTE LATERALE*



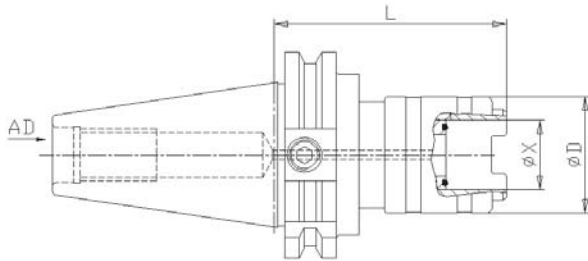
DIN 69871



COOLANT-THRU RIGID TAP HOLDERS

MANDRINO RIGIDO CON PASSAGGIO REFRIGERANTE

Part Number	Size	Tap Size	ØD	L	ØX
TC40-R1-L59C	1 - M3÷M12	ISO 40	33	59	19
TC40-R2-L86C	2 - M8÷M20	ISO 40	50	86	31
TC40-R3-L122C	3 - M14÷M33	ISO 40	72	122	48
TC50-R1-L75C	1 - M3÷M12	ISO 50	33	75	19
TC50-R2-L98C	2 - M8÷M20	ISO 50	50	98	31
TC50-R3-L122C	3 - M14÷M33	ISO 50	72	122	48



TC-R-C (Form AD)

QUICK CHANGE TAPPING CHUCKS - MAX COOLANT PRESSURE 50 BAR -
CENTRAL COOLANT FLOW

*MANDRINI A CAMBIO RAPIDO - PRESSIONE MASSIMA 50 BAR - PASSAGGIO
REFRIGERANTE CENTRALE*

DIN 69871

HYDRAULIC CHUCK

MANDRINO A BLOCCAGGIO IDRAULICO

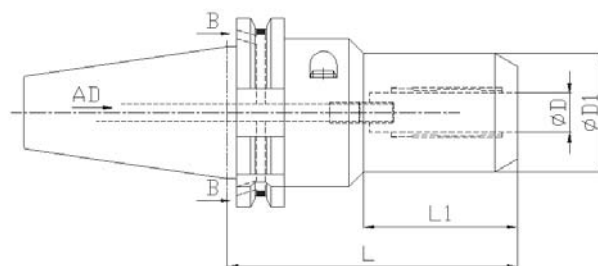
NEW

Part Number	Tap Size	ØD	ØD1	L	L1
TC40-SHC12-L80	ISO 40	12	32	80	32
TC40-SHC20-L80	ISO 40	20	42	80	34
TC50-SHC20-L80	ISO 50	20	42	80	34

TC-SHC (Form AD+B)

RUN-OUT ACCURACY 0,010 mm MAX - CLAMPING TORQUE: Ø12 50 Nm - Ø20 240 Nm

PRECISIONE DI CONCENTRICITA' 0,010 mm MAX - FORZA DI CHIUSURA: Ø12 50 Nm - Ø20 240 Nm



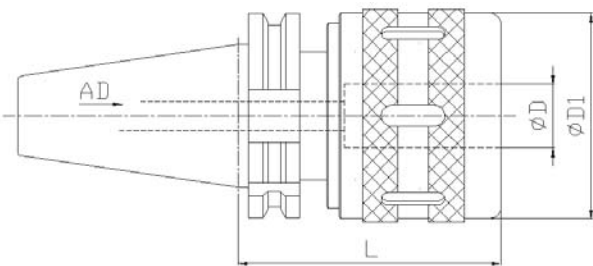
DIN 69871

NEW

MILLING CHUCK

MANDRINO A FORTE SERRAGGIO

Part Number	Tap Size	ØD	ØD1	L
TC40-SMC20-L105	ISO 40	20	54	105
TC40-SMC32-L105	ISO 40	32	72	105
TC50-SMC32-L105	ISO 50	32	72	105

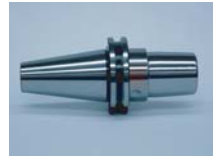


TC-SMC (Form AD)

RUN-OUT ACCURACY 0,010 mm MAX - CHUCK PROVIDED WITH SPANNER
PRECISIONE DI CONCENTRICITA' 0,010 mm MAX - MANDRINO FORNITO CON
CHIAVE DI SERRAGGIO

DIN 69871

SHRINK FIT TOOLHOLDERS - STANDARD LENGTH MANDRINO CON BLOCCAGGIO AD INDUZIONE TERMICA - LUNGHEZZA STANDARD

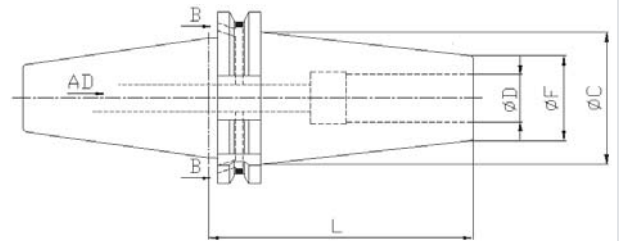


Part Number	Tap Size	ØD	L	C	F
TC40-SSF6-L94	ISO 40	6	94	20	12
TC40-SSF8-L94	ISO 40	8	94	25	17
TC40-SSF10-L94	ISO 40	10	94	27	19
TC40-SSF12-L94	ISO 40	12	94	30	22
TC40-SSF16-L94	ISO 40	16	94	34	26
TC50-SSF6-L94	ISO 50	6	94	20	12
TC50-SSF8-L94	ISO 50	8	94	25	17
TC50-SSF10-L94	ISO 50	10	94	27	19
TC50-SSF12-L94	ISO 50	12	94	30	22
TC50-SSF16-L94	ISO 50	16	94	34	26

TC-SSF (Form AD+B)

PRE-BALANCED : ISO 40 = G 2,5 AT 20,000 RPM / ISO 50 = G 6,3 AT 12,000 RPM - ISO TAPER FORM AD+B

PRE-BILANCIATO : ISO 40 = G 2,5 A 20,000 GIRI / ISO 50 = G 6,3 A 12,000 GIRI - CONO ISO FORMA AD+B

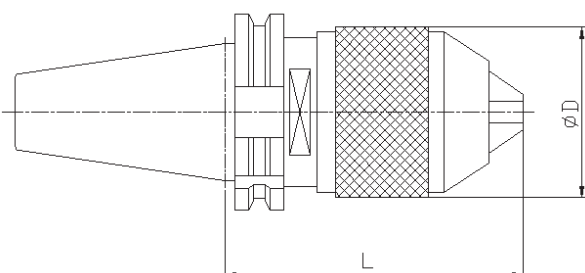


DIN 69871

TAPER INTEGRAL KEYLESS DRILL CHUCKS *PORTAPUNTA INTEGRALE*



Part Number	Tap Size	Capacity	ØD	L
TC30-SDCPU-08	ISO 30	0 ÷ 8	38	83
TC30-SDCPU-010	ISO 30	0 ÷ 10	43	94
TC40-SDCPU-08	ISO 40	0 ÷ 8	38	76
TC40-SDCPU-010	ISO 40	0 ÷ 10	43	82
TC40-SDCPU-113	ISO 40	1 ÷ 13	48	91
TC40-SDCPU-316	ISO 40	3 ÷ 16	55	108
TC45-SDCPU-113	ISO 45	1 ÷ 13	48	89
TC50-SDCPU-113	ISO 50	1 ÷ 13	48	89
TC50-SDCPU-316	ISO 50	3 ÷ 16	55	89



TC-SDCPU (Form A)

SHANK DRILL CHUCKS WITH SPANNER - SUPER PRECISION

MANDRINO FORNITO CON CHIAVE DI SERRAGGIO - ALTA PRECISIONE

DIN 69871

DRILL CHUCK ARBORS

MANDRINO CON ATTACCO PER MANDRINI AUTOSERRANTI

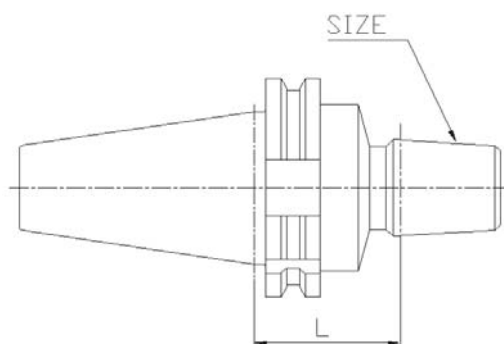
NEW

Part Number	Tap Size	Size	L
TC40-DCA-B12	ISO 40	B 12	25
TC40-DCA-B16	ISO 40	B 16	25
TC40-DCA-B18	ISO 40	B 18	25
TC50-DCA-B12	ISO 50	B 12	25
TC50-DCA-B16	ISO 50	B 16	25
TC50-DCA-B18	ISO 50	B 18	25

TC-DCA (Form A)

FOR TAPER DIN 238 - ISO 30 AVAILABLE ON DEMAND

PER MANDRINI CON ATTACCO DIN 238 - ISO 30 DISPONIBILE A RICHIESTA

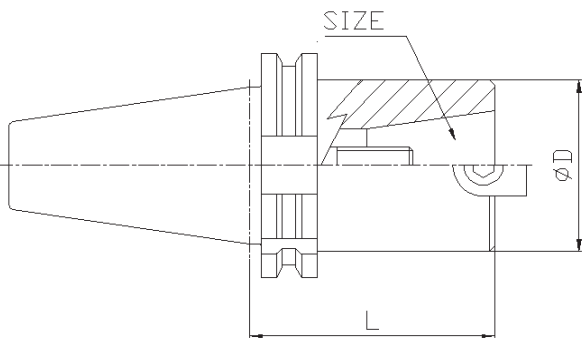


DIN 69871

NEW

REDUCTION SLEEVES
MANDRINO DI RIDUZIONE

Part Number	Tap Size	Size	ØD	L
TC50-RS40	ISO 50	ISO 40	63	70



TC-RS (Form A)

FROM ISO TO ISO TAPER SUPPLIED WITH MOUNTED TIGHTENING BOLT

DA CONO ISO A CONO ISO FORNITI DI VITE-TIRANTE PER IL BLOCCAGGIO UTENSILI

DIN 69871

BLANK BARS

STELO TENERO LAVORABILE

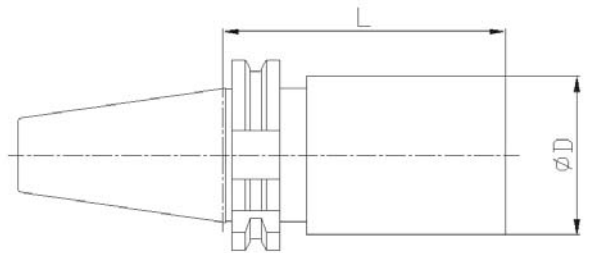


Part Number	Tap Size	ØD	L
TC40-SBB40-L160	ISO 40	40	160
TC40-SBB40-L250	ISO 40	40	250
TC40-SBB63-L160	ISO 40	63	160
TC40-SBB63-L250	ISO 40	63	250
TC50-SBB63-L315	ISO 50	63	315
TC50-SBB80-L200	ISO 50	80	200
TC50-SBB80-L250	ISO 50	80	250
TC50-SBB80-L320	ISO 50	80	320
TC50-SBB97-L315	ISO 50	97	315

TC-SBB (Form A)

BLANK END HRC 27-31 - BLANK PART CAN BE FINISHED BY THE USER

DUREZZA PARTE LAVORABILE HRC 27-31 - LA PARTE LAVORABILE PUO' ESSERE FINITA DALL' UTILIZZATORE

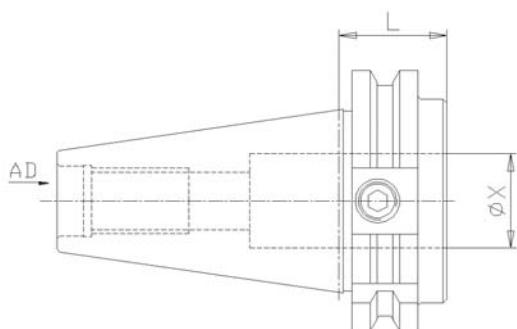


DIN 69871



MASTERS FOR MODULAR TAP HOLDERS *CONO MODULARE*

Part Number	Tap Size	ØX	L
TC40-MTH16	ISO 40	16	35
TC40-MTH18	ISO 40	18	35
TC40-MTH20	ISO 40	20	35
TC40-MTH25	ISO 40	25	35
TC40-MTH32	ISO 40	32	70
TC50-MTH16	ISO 50	16	35
TC50-MTH18	ISO 50	18	35
TC50-MTH20	ISO 50	20	35
TC50-MTH25	ISO 50	25	35
TC50-MTH32	ISO 50	32	35



TC-MTH (Form AD)

FOR WELDON TAP HOLDERS CENTRAL COOLANT FLOW

PER MANDRINI WELDON PASSAGGIO REFRIGERANTE CENTRALE

DIN 69871

DIMENSIONS

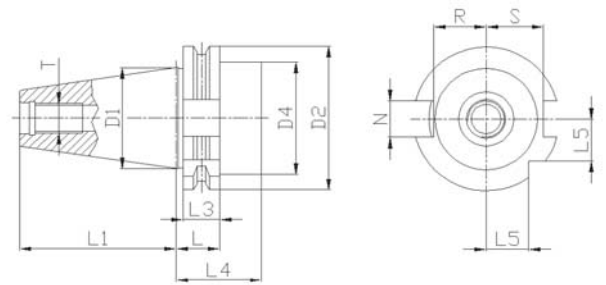
DIMENSIONI

Tap Size	ØD1	ØD2	ØD4	L	L1	L3	L4	L5	N	R	S	T
ISO 30	31,75	50	45 MAX	19,1	47,8	15,9	33,5	15	16,1	16,4	19	M 12
ISO 40	44,45	63,55	50 MAX	19,1	68,4	15,9	42,5	18,5	16,1	22,8	25	M 16
ISO 50	69,85	97,50	80 MAX	19,1	101,75	15,9	61,5	30	25,7	35,5	37,7	M 24

DIN 69871/A

DIN 69871/A

DIN 69871/A



Seinco Components s.r.l.

Via della Basilica, 2

10122 - Torino - Italy

P.Iva - Vat : 09226290014

Tel. : +39 011 4361658

Fax : +39 011 4361658

e-mail : sales@seincosrl.com

<http://www.seincosrl.com>