

HSKA-ERS (Form A)

ER COLLET CHUCKS

PORTAPINZA ER

3.5

HSKA-ERSM (Form A)

ER MINI COLLET CHUCKS

PORTAPINZA ER GHIERA MINI

3.6

HSKA-WE (Form A)

WELDON (DIN 1835 B) END MILL HOLDERS

PORTAFRESE TIPO WELDON (DIN 1835 B)

3.7

HSKA-WN (Form A)

WHISTLE NOTCH (DIN 1835 E) END MILL HOLDERS

PORTAFRESE TIPO WHISTLE-NOTCH (DIN 1835 E)

3.9

HSKA-C (Form A)

COMBI SHELL MILL HOLDERS

PORTAFRESA COMBINATO UNIVERSALE

3.10

HSKA-S (Form A)

SHELL MILL HOLDERS WITH COOLANT THROUGH

PORTAFRESA FISSO CON PASSAGGIO REFRIGERANTE

3.11

HSKA-M (Form A)

SCREW IN END MILL HOLDERS

MANDRINO PER FRESE CON ATTACCO FILETTATO

3.12

HSKA-CMB (Form A)

MORSE TAPER ADAPTORS FOR DRILLS WITH FLAT TANG

RIDUZIONE A CONO MORSE PER PUNTE CON TENONE

3.15

HSK DIN 69893

HSKA-CMA (Form A)

MORSE TAPER ADAPTORS FOR MILLS WITH THREAD

RIDUZIONE A CONO MORSE PER FRESE CON ATTACCO FILETTATO

3.16

HSKA-ST (Form A)

SAFE TAPPING ONLY TENSION TAP HOLDERS

MANDRINO TRAZIONE RIDOTTA PER PROTEZIONE MASCHIATURA

3.17

HSKA-TC (Form A)

TENSION/COMPRESSION TAP HOLDERS

MANDRINO COMPENSATO ASSIALMENTE

3.18

HSKA-OT (Form A)

ONLY TENSION TAP HOLDERS

MANDRINO COMPENSATO SOLO IN TRAZIONE

3.19

HSKA-R-C (Form A)

COOLANT-THRU RIGID TAP HOLDERS

MANDRINO RIGIDO CON PASSAGGIO REFRIGERANTE

3.20

HSKA-TC-C (Form A)

COOLANT-THRU TENSION/COMPRESSION TAP HOLDERS

COMPENSATO ASSIALMENTE CON PASSAGGIO REFRIGERANTE

3.21

HSKA-OT-C (Form A)

COOLANT-THRU ONLY TENSION TAP HOLDERS

MANDRINO COMPENSATO SOLO IN TRAZIONE CON PASSAGGIO REFRIGERANTE

3.22

HSKA-SHC (Form A)

HYDRAULIC CHUCK

MANDRINO A BLOCCAGGIO IDRAULICO

3.23

HSK DIN 69893

HSKA-SMC (Form A)

MILLING CHUCK

MANDRINO A FORTE SERRAGGIO

3.24

HSKA-SSF (Form A)

SHRINK FIT TOOLHOLDERS - STANDARD LENGTH

MANDRINO CON BLOCCAGGIO AD INDUZIONE TERMICA - LUNGHEZZA STANDARD

3.25

HSKA-SDCPU (Form A)

TAPER INTEGRAL KEYLESS DRILL CHUCKS

PORTAPUNTA INTEGRALE

3.26

HSKA-SBB (Form A)

BLANK BARS

STELO TENERO LAVORABILE

3.27

HSKE-ERS (Form E)

ER COLLET CHUCKS

PORTAPINZA ER

3.28

HSKE-ERSM (Form E)

ER MINI COLLET CHUCKS

PORTAPINZA ER GHIERA MINI

3.29

HSKE-WE (Form E)

WELDON (DIN 1835 B) END MILL HOLDERS

PORTAFRESE TIPO WELDON (DIN 1835 B)

3.30

HSKE-M (Form E)

SCREW IN END MILL HOLDERS

MANDRINO PER FRESE CON ATTACCO FILETTATO

3.31

HSK DIN 69893

HSKE-TC (Form E)

TENSION/COMPRESSION TAP HOLDERS

MANDRINO COMPENSATO ASSIALMENTE

3.33

HSKE-OT (Form E)

ONLY TENSION TAP HOLDERS

MANDRINO COMPENSATO SOLO IN TRAZIONE

3.34

HSKE-R-C (Form E)

COOLANT-THRU RIGID TAP HOLDERS

MANDRINO RIGIDO CON PASSAGGIO REFRIGERANTE

3.35

HSKE-SSF (Form E)

SHRINK FIT TOOLHOLDERS - STANDARD LENGTH

MANDRINO CON BLOCCAGGIO AD INDUZIONE TERMICA - LUNGHEZZA STANDARD

3.36

HSK A/E

DIMENSIONS

DIMENSIONI

3.37

HSK DIN 69893

ER COLLET CHUCKS

PORTAPINZA ER

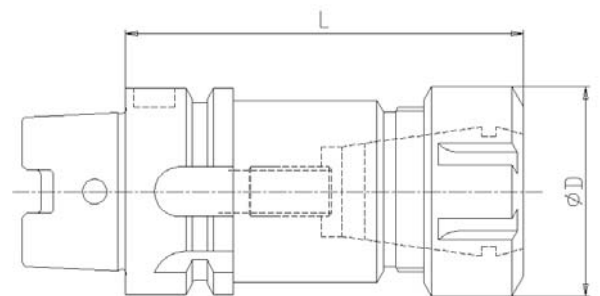


Part Number	Tap Size	Collet	Collet Range	L	ØD
HSK40A-ERS16-L70	HSK-40	ER 16	0,5 ÷ 10	70	32
HSK40A-ERS25-L70	HSK-40	ER 25	1 ÷ 16	70	42
HSK50A-ERS16-L100	HSK-50	ER 16	0,5 ÷ 10	100	32
HSK50A-ERS25-L100	HSK-50	ER 25	1 ÷ 16	100	42
HSK50A-ERS32-L100	HSK-50	ER 32	2 ÷ 20	100	50
HSK63A-ERS16-L100	HSK-63	ER 16	0,5 ÷ 10	100	32
HSK63A-ERS16-L160	HSK-63	ER 16	0,5 ÷ 10	160	32
HSK63A-ERS25-L100	HSK-63	ER 25	1 ÷ 16	100	42
HSK63A-ERS32-L100	HSK-63	ER 32	2 ÷ 20	100	50
HSK63A-ERS40-L100	HSK-63	ER 40	3 ÷ 26	100	63
HSK80A-ERS32-L100	HSK-80	ER 32	2 ÷ 20	100	50
HSK80A-ERS40-L120	HSK-80	ER 40	3 ÷ 26	120	63
HSK100A-ERS16-L100	HSK-100	ER 16	0,5 ÷ 10	100	28
HSK100A-ERS16-L160	HSK-100	ER 16	0,5 ÷ 10	160	28
HSK100A-ERS25-L100	HSK-100	ER 25	1 ÷ 16	100	42
HSK100A-ERS32-L100	HSK-100	ER 32	2 ÷ 20	100	50
HSK100A-ERS40-L100	HSK-100	ER 40	3 ÷ 26	100	63

HSKA-ERS (Form A)

PRE-BALANCED - COLLET CHUCKS PROVIDED WITH BACK UP SCREW AND CLAMPING NUT

PRE-EQUILIBRATI - MANDRINO FORNITO DI VITE DI REGISTRAZIONE E GHIERA



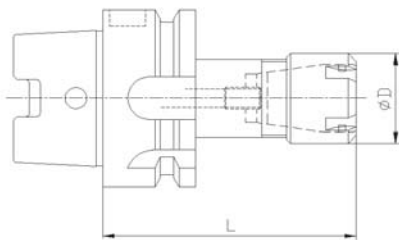
HSK DIN 69893

NEW

ER MINI COLLET CHUCKS *PORTAPINZA ER GHIERA MINI*

Part Number	Tap Size	Collet	Collet Range	L	ØD
HSK40A-ERS11M-L100	HSK-40	ER 11 MINI	1 ÷ 7	100	16
HSK40A-ERS16M-L100	HSK-40	ER 16 MINI	1 ÷ 10	100	22
HSK50A-ERS16M-L100	HSK-50	ER 16 MINI	1 ÷ 10	100	22
HSK63A-ERS11M-L100	HSK-63	ER 11 MINI	1 ÷ 7	100	16
HSK63A-ERS11M-L160	HSK-63	ER 11 MINI	1 ÷ 7	160	16
HSK63A-ERS16M-L100	HSK-63	ER 16 MINI	1 ÷ 10	100	22
HSK63A-ERS16M-L160	HSK-63	ER 16 MINI	1 ÷ 10	160	22
HSK63A-ERS20M-L100	HSK-63	ER 20 MINI	1 ÷ 13	100	28
HSK63A-ERS20M-L160	HSK-63	ER 20 MINI	1 ÷ 13	160	28
HSK63A-ERS25M-L100	HSK-63	ER 25 MINI	1 ÷ 16	100	35
HSK63A-ERS25M-L160	HSK-63	ER 25 MINI	1 ÷ 16	160	35

HSKA-ERSM (Form A)



PRE-BALANCED - COLLET CHUCKS PROVIDED WITH BACK UP SCREW AND CLAMPING NUT

PRE-EQUILIBRATI - MANDRINO FORNITO DI VITE DI REGISTRAZIONE E GHIERA

HSK DIN 69893

WELDON (DIN 1835 B) END MILL HOLDERS PORTAFRESE TIPO WELDON (DIN 1835 B)

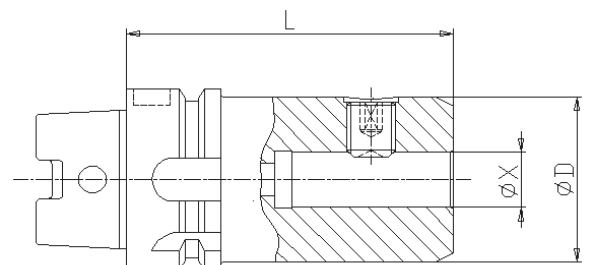


Part Number	Tap Size	ØX	L	ØD
HSK50A-WE6-L65	HSK-50	6	65	25
HSK50A-WE8-L65	HSK-50	8	65	28
HSK50A-WE10-L65	HSK-50	10	65	35
HSK50A-WE12-L80	HSK-50	12	80	42
HSK50A-WE16-L80	HSK-50	16	80	48
HSK50A-WE20-L80	HSK-50	20	80	52
HSK63A-WE6-L65	HSK-63	6	65	25
HSK63A-WE8-L65	HSK-63	8	65	28
HSK63A-WE10-L65	HSK-63	10	65	35
HSK63A-WE12-L80	HSK-63	12	80	42
HSK63A-WE16-L80	HSK-63	16	80	48
HSK63A-WE20-L80	HSK-63	20	80	52
HSK63A-WE25-L110	HSK-63	25	110	65
HSK63A-WE32-L110	HSK-63	32	110	72
HSK80A-WE6-L80	HSK-80	6	80	25
HSK80A-WE8-L80	HSK-80	8	80	28
HSK80A-WE10-L80	HSK-80	10	80	35
HSK80A-WE12-L80	HSK-80	12	80	42
HSK80A-WE16-L100	HSK-80	16	100	48
HSK80A-WE20-L80	HSK-80	20	80	52
HSK80A-WE25-L80	HSK-80	25	80	65
HSK80A-WE32-L80	HSK-80	32	80	72
HSK100A-WE6-L80	HSK-100	6	80	25
HSK100A-WE8-L80	HSK-100	8	80	28
continued / continua				

HSKA-WE (Form A)

PRE-BALANCED : HSK-50/63 = G 2,5 AT 15,000 RPM / HSK-80 / 100 = G 2,5
AT 10,000 RPM END MILL HOLDERS PROVIDED WITH SET SCREW(S)

PRE-BILANCIATO : HSK-50/63 = G 2,5 A 15,000 GIRI / HSK-80 / 100 = G 2,5
A 10,000 GIRI - MANDRINO FORNITO DI VITE/I



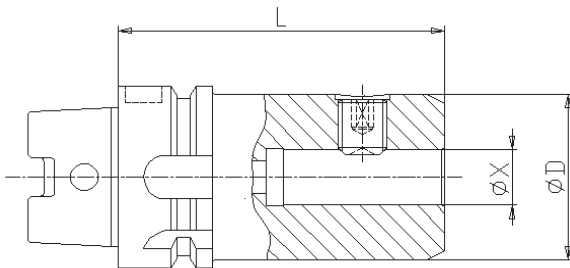
HSK DIN 69893



WELDON (DIN 1835 B) END MILL HOLDERS

PORTAFRESE TIPO WELDON (DIN 1835 B)

Part Number	Tap Size	ØX	L	ØD
HSK100A-WE10-L80	HSK-100	10	80	35
HSK100A-WE12-L80	HSK-100	12	80	42
HSK100A-WE16-L100	HSK-100	16	100	48
HSK100A-WE20-L100	HSK-100	20	100	52
HSK100A-WE25-L100	HSK-100	25	100	65
HSK100A-WE32-L100	HSK-100	32	100	72



HSKA-WE (Form A)

PRE-BALANCED : HSK-50/63 = G 2,5 AT 15,000 RPM / HSK-80 / 100 = G 2,5
AT 10,000 RPM END MILL HOLDERS PROVIDED WITH SET SCREW(S)

PRE-BILANCIATO : HSK-50/63 = G 2,5 A 15,000 GIRI / HSK-80 / 100 = G 2,5
A 10,000 GIRI - MANDRINO FORNITO DI VITE/I

HSK DIN 69893

WHISTLE NOTCH (DIN 1835 E) END MILL HOLDERS
 PORTAFRESE TIPO WHISTLE-NOTCH (DIN 1835 E)

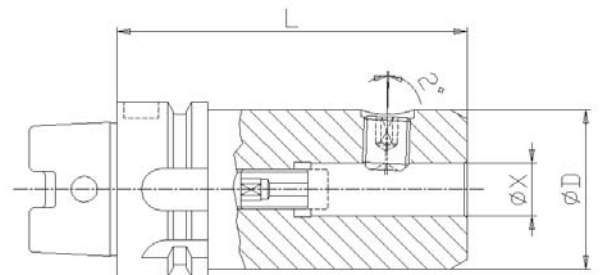


Part Number	Tap Size	ØX	L	ØD
HSK50A-WN6-L80	HSK-50	6	80	25
HSK50A-WN8-L80	HSK-50	8	80	28
HSK50A-WN10-L80	HSK-50	10	80	35
HSK50A-WN12-L90	HSK-50	12	90	42
HSK50A-WN14-L90	HSK-50	14	90	44
HSK50A-WN16-L90	HSK-50	16	90	48
HSK50A-WN18-L90	HSK-50	18	90	50
HSK50A-WN20-L100	HSK-50	20	100	52
HSK63A-WN6-L80	HSK-63	6	80	25
HSK63A-WN8-L80	HSK-63	8	80	28
HSK63A-WN10-L80	HSK-63	10	80	35
HSK63A-WN12-L90	HSK-63	12	90	42
HSK63A-WN14-L90	HSK-63	14	90	44
HSK63A-WN16-L100	HSK-63	16	100	48
HSK63A-WN18-L100	HSK-63	18	100	50
HSK63A-WN20-L100	HSK-63	20	100	52
HSK63A-WN25-L100	HSK-63	25	100	65
HSK63A-WN32-L110	HSK-63	32	110	72
HSK100A-WN6-L90	HSK-100	6	90	25
HSK100A-WN8-L90	HSK-100	8	90	28
HSK100A-WN10-L90	HSK-100	10	90	35
HSK100A-WN12-L100	HSK-100	12	100	42
HSK100A-WN14-L100	HSK-100	14	100	44
HSK100A-WN16-L100	HSK-100	16	100	48
HSK100A-WN18-L100	HSK-100	18	100	50
HSK100A-WN20-L100	HSK-100	20	100	52
HSK100A-WN25-L100	HSK-100	25	100	65
HSK100A-WN32-L100	HSK-100	32	100	72
HSK100A-WN40-L120	HSK-100	40	120	80

HSKA-WN (Form A)

PRE-BALANCED : HSK-50/63 = G 2,5 AT 15,000 RPM / HSK-80 / 100 = G 2,5
 AT 10,000 RPM END MILL HOLDERS PROVIDED WITH SET SCREW(S)

PRE-BILANCIATO : HSK-50/63 = G 2,5 A 15,000 GIRI / HSK-80 / 100 = G 2,5
 A 10,000 GIRI - MANDRINO FORNITO DI VITE/1



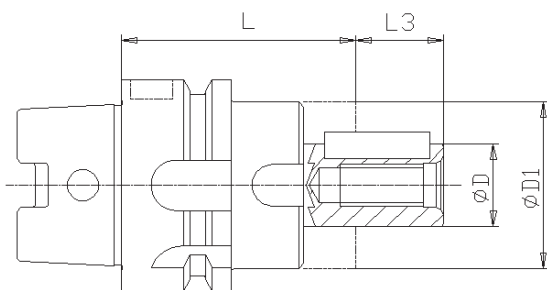
HSK DIN 69893



COMBI SHELL MILL HOLDERS

PORTAFRESA COMBINATO UNIVERSALE

Part Number	Tap Size	ØD	ØD1	L	L3
HSK50A-C16-L50	HSK-50	16	32	50	17
HSK50A-C22-L50	HSK-50	22	40	50	19
HSK50A-C27-L65	HSK-50	27	48	65	21
HSK63A-C16-L60	HSK-63	16	32	60	17
HSK63A-C16-L100	HSK-63	16	32	100	17
HSK63A-C22-L60	HSK-63	22	40	60	19
HSK63A-C22-L100	HSK-63	22	40	100	19
HSK63A-C27-L60	HSK-63	27	48	60	21
HSK63A-C27-L100	HSK-63	27	48	100	21
HSK63A-C32-L60	HSK-63	32	58	60	24
HSK63A-C32-L100	HSK-63	32	58	100	24
HSK63A-C40-L70	HSK-63	40	70	70	27
HSK63A-C40-L100	HSK-63	40	70	100	27
HSK100A-C16-L60	HSK-100	16	32	60	17
HSK100A-C16-L100	HSK-100	16	32	100	17
HSK100A-C22-L60	HSK-100	22	40	60	19
HSK100A-C22-L100	HSK-100	22	40	100	19
HSK100A-C27-L60	HSK-100	27	48	60	21
HSK100A-C27-L100	HSK-100	27	48	100	21
HSK100A-C32-L60	HSK-100	32	58	60	24
HSK100A-C32-L100	HSK-100	32	58	100	24
HSK100A-C40-L70	HSK-100	40	70	70	27
HSK100A-C40-L100	HSK-100	40	70	100	27



HSKA-C (Form A)

DIN 6358/B - SHELL MILL HOLDERS PROVIDED WITH ARBOR SCREW,
FEATHER KEY AND DRIVE RING

*DIN 6358/B - MANDRINO FORNITO DI VITE DI SERRAGGIO, ANELLO DI
TRASCINAMENTO E LINGUETTA*

HSK DIN 69893

SHELL MILL HOLDERS WITH COOLANT THROUGH
 PORTAFRESA FISSO CON PASSAGGIO REFRIGERANTE

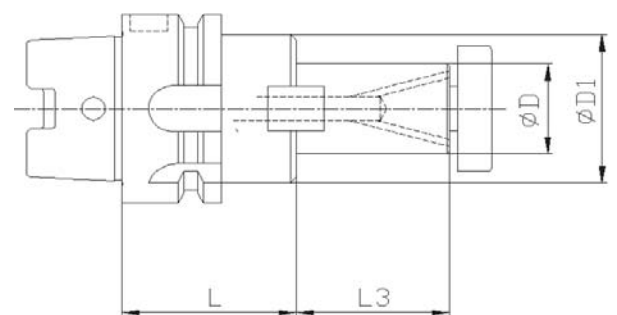
NEW

Part Number	Tap Size	ØD	ØD1	L	L3
HSK50A-S16-L50	HSK-50	16	32	50	17
HSK50A-S22-L50	HSK-50	22	40	50	19
HSK50A-S22-L100	HSK-50	22	40	100	19
HSK50A-S27-L50	HSK-50	27	48	50	21
HSK50A-S27-L100	HSK-50	27	48	100	21
HSK63A-S16-L50	HSK-63	16	32	50	17
HSK63A-S22-L50	HSK-63	22	40	50	19
HSK63A-S22-L100	HSK-63	22	40	100	19
HSK63A-S27-L60	HSK-63	27	48	60	21
HSK63A-S27-L100	HSK-63	27	48	100	21
HSK63A-S32-L60	HSK-63	32	58	60	24
HSK63A-S32-L100	HSK-63	32	58	100	24
HSK63A-S32-L160	HSK-63	32	58	160	24
HSK63A-S40-L60	HSK-63	40	70	60	27
HSK63A-S40-L100	HSK-63	40	70	100	27
HSK63A-S40-L160	HSK-63	40	70	160	27
HSK100A-S16-L50	HSK-100	16	32	50	17
HSK100A-S22-L50	HSK-100	22	40	50	19
HSK100A-S22-L100	HSK-100	22	40	100	19
HSK100A-S22-L160	HSK-100	22	40	160	19
HSK100A-S27-L50	HSK-100	27	48	50	21
HSK100A-S27-L100	HSK-100	27	48	100	21
HSK100A-S27-L160	HSK-100	27	48	160	21
HSK100A-S32-L50	HSK-100	32	58	50	24
HSK100A-S32-L100	HSK-100	32	58	100	24
HSK100A-S32-L160	HSK-100	32	58	160	24
HSK100A-S40-L60	HSK-100	40	70	60	27

HSKA-S (Form A)

THE COOLANT EXIT BORES ARE ON THE END FACE OF THE HOLDER - SHELL
 MILL HOLDERS PROVIDED WITH ARBOR SCREW AND DRIVE RING

IL REFRIGERANTE ESCE DAI FORI SITUATI SULLA FACCIA DEL MANDRINO -
 MANDRINO FORNITO DI VITE DI SERRAGGIO E TASSELLI DI TRASCINAMENTO



HSK DIN 69893

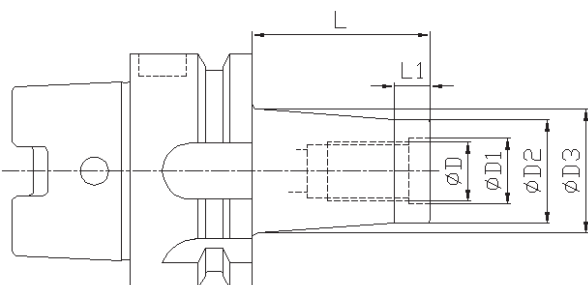
NEW

SCREW IN END MILL HOLDERS

MANDRINO PER FRESE CON ATTACCO FILETTATO

Part Number	Tap Size	ØD	ØD1	ØD2	ØD3	L	L1
HSK50A-M6-L33	HSK 50	M6	6,5	10	10	33	25
HSK50A-M6-L58	HSK 50	M6	6,5	10	20	58	10
HSK50A-M6-L83	HSK 50	M6	6,5	10	23	83	10
HSK50A-M8-L33	HSK 50	M8	8,5	13	15	33	10
HSK50A-M8-L58	HSK 50	M8	8,5	13	23	58	10
HSK50A-M8-L83	HSK 50	M8	8,5	13	23	83	10
HSK50A-M8-L108	HSK 50	M8	8,5	13	25	108	10
HSK50A-M10-L33	HSK 50	M10	10,5	18	20	33	10
HSK50A-M10-L58	HSK 50	M10	10,5	18	25	58	10
HSK50A-M10-L83	HSK 50	M10	10,5	18	28	83	10
HSK50A-M10-L108	HSK 50	M10	10,5	18	30	108	10
HSK50A-M12-L33	HSK 50	M12	12,5	21	24	33	10
HSK50A-M12-L58	HSK 50	M12	12,5	21	24	58	10
HSK50A-M12-L83	HSK 50	M12	12,5	21	31	83	10
HSK50A-M12-L108	HSK 50	M12	12,5	21	31	108	10
HSK63A-M6-L33	HSK 63	M6	6,5	10	10	33	10
HSK63A-M6-L58	HSK 63	M6	6,5	10	20	58	10
HSK63A-M6-L83	HSK 63	M6	6,5	10	23	83	10
HSK63A-M8-L33	HSK 63	M8	8,5	13	15	33	10
HSK63A-M8-L58	HSK 63	M8	8,5	13	23	58	10
HSK63A-M8R-L58	HSK 63	M8	8,5	13	15	58	10
HSK63A-M8-L83	HSK 63	M8	8,5	13	23	83	10
HSK63A-M8R-L83	HSK 63	M8	8,5	13	15	83	10
HSK63A-M8-L108	HSK 63	M8	8,5	13	25	108	10

continued / continua



HSKA-M (Form A)

PRE-BALANCED : HSK 50/63 = G 2,5 AT 20,000 RPM - HSK 80/100 = NOT PRE-BALANCED

PRE-BILANCIATO : HSK-50/63 = G 2,5 A 20,000 GIRI - HSK 80/100 = NON PRE-EQUILIBRATI

HSK DIN 69893

SCREW IN END MILL HOLDERS

MANDRINO PER FRESE CON ATTACCO FILETTATO

NEW

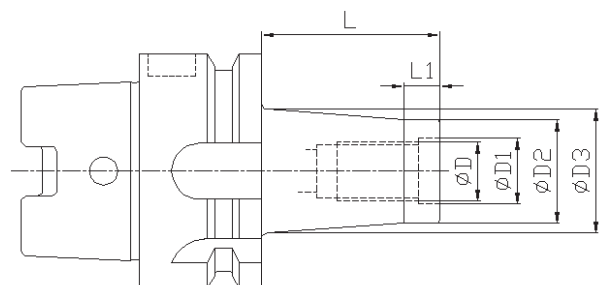
Part Number	Tap Size	ØD	ØD1	ØD2	ØD3	L	L1
HSK63A-M10-L33	HSK 63	M10	10,5	18	20	33	10
HSK63A-M10-L58	HSK 63	M10	10,5	18	25	58	10
HSK63A-M10R-L58	HSK 63	M10	10,5	18	20	58	10
HSK63A-M10-L83	HSK 63	M10	10,5	18	28	83	10
HSK63A-M10R-L83	HSK 63	M10	10,5	18	20	83	10
HSK63A-M10-L108	HSK 63	M10	10,5	18	28	108	10
HSK63A-M10R-L108	HSK 63	M10	10,5	18	20	108	10
HSK63A-M12-L33	HSK 63	M12	12,5	21	24	33	10
HSK63A-M12-L58	HSK 63	M12	12,5	21	24	58	10
HSK63A-M12-L83	HSK 63	M12	12,5	21	31	83	10
HSK63A-M12R-L83	HSK 63	M12	12,5	21	24	83	10
HSK63A-M12-L108	HSK 63	M12	12,5	21	31	108	10
HSK63A-M16-L33	HSK 63	M16	17	29	34	33	10
HSK63A-M16-L58	HSK 63	M16	17	29	34	58	10
HSK63A-M16-L83	HSK 63	M16	17	29	34	83	10
HSK63A-M16-L108	HSK 63	M16	17	29	39	108	10
HSK63A-M16R-L108	HSK 63	M16	17	29	31	108	10
HSK63A-M16-L133	HSK 63	M16	17	29	39	133	10
HSK80A-M6-L58	HSK 80	M6	6,5	10	20	58	10
HSK80A-M6-L83	HSK 80	M6	6,5	10	23	83	10
HSK80A-M8-L58	HSK 80	M8	8,5	13	23	58	10
HSK80A-M8-L83	HSK 80	M8	8,5	13	23	83	10
HSK80A-M8-L108	HSK 80	M8	8,5	13	25	108	10
HSK80A-M10-L58	HSK 80	M10	10,5	18	25	58	10

continued / continua

HSKA-M (Form A)

PRE-BALANCED : HSK 50/63 = G 2,5 AT 20,000 RPM - HSK 80/100 = NOT PRE-BALANCED

PRE-BILANCIATO : HSK-50/63 = G 2,5 A 20,000 GIRI - HSK 80/100 = NON PRE-EQUILIBRATI



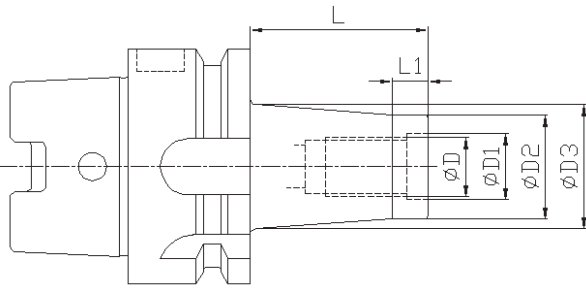
HSK DIN 69893

NEW

SCREW IN END MILL HOLDERS

MANDRINO PER FRESE CON ATTACCO FILETTATO

Part Number	Tap Size	ØD	ØD1	ØD2	ØD3	L	L1
HSK80A-M10-L83	HSK 80	M10	10,5	18	28	83	10
HSK80A-M10-L108	HSK 80	M10	10,5	18	28	108	10
HSK80A-M12-L58	HSK 80	M12	12,5	21	24	58	10
HSK80A-M12-L83	HSK 80	M12	12,5	21	31	83	10
HSK80A-M12-L108	HSK 80	M12	12,5	21	31	108	10
HSK80A-M16-L58	HSK 80	M16	17	29	34	58	10
HSK80A-M16-L83	HSK 80	M16	17	29	34	83	10
HSK80A-M16-L108	HSK 80	M16	17	29	39	108	10
HSK80A-M16-L133	HSK 80	M16	17	29	55	133	10
HSK80A-M16-L158	HSK 80	M16	17	29	55	158	10
HSK100A-M12-L58	HSK 100	M12	12,5	21	24	58	10
HSK100A-M12-L108	HSK 100	M12	12,5	21	47	108	10
HSK100A-M12-L158	HSK 100	M12	12,5	21	55	158	10
HSK100A-M16-L58	HSK 100	M16	17	29	32	58	10
HSK100A-M16-L108	HSK 100	M16	17	29	42	108	10
HSK100A-M16-L158	HSK 100	M16	17	29	55	158	10
HSK100A-M16-L208	HSK 100	M16	17	29	55	208	10



HSKA-M (Form A)

PRE-BALANCED : HSK 50/63 = G 2,5 AT 20,000 RPM - HSK 80/100 = NOT PRE-BALANCED

PRE-BILANCIATO : HSK-50/63 = G 2,5 A 20,000 GIRI - HSK 80/100 = NON PRE-EQUILIBRATI

HSK DIN 69893

MORSE TAPER ADAPTORS FOR DRILLS WITH FLAT TANG
RIDUZIONE A CONO MORSE PER PUNTE CON TENONE

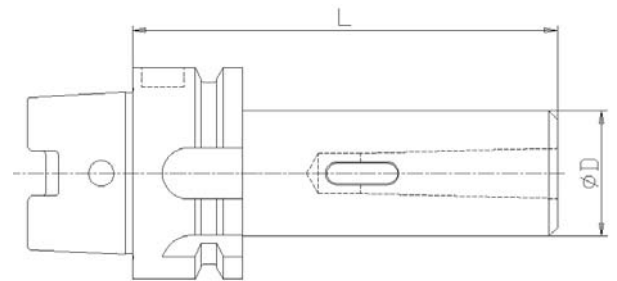


Part Number	Tap Size	Size	ØD	L
HSK63A-CMB1-L100	HSK 63	CM 1	25	100
HSK63A-CMB2-L120	HSK 63	CM 2	32	120
HSK63A-CMB3-L140	HSK 63	CM 3	40	140
HSK63A-CMB4-L160	HSK 63	CM 4	48	160

HSKA-CMB (Form A)

FOR MORSE TAPER DIN 228B - HSK 80 AVAILABLE ON DEMAND

PER CONO MORSE DIN 228B - HSK 80 DISPONIBILE A RICHIESTA

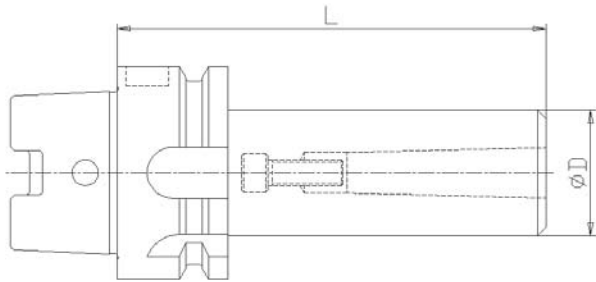


HSK DIN 69893



MORSE TAPER ADAPTORS FOR MILLS WITH THREAD
*RIDUZIONE A CONO MORSE PER FRESE CON ATTACCO
FILETTATO*

Part Number	Tap Size	Size	ØD	L
HSK63A-CMA1-L100	HSK 63	CM 1	25	100
HSK63A-CMA2-L120	HSK 63	CM 2	32	120
HSK63A-CMA3-L140	HSK 63	CM 3	40	140
HSK63A-CMA4-L160	HSK 63	CM 4	48	160
HSK100A-CMA2-L120	HSK 100	CM 2	32	120
HSK100A-CMA3-L140	HSK 100	CM 3	40	140
HSK100A-CMA4-L160	HSK 100	CM 4	48	160



HSKA-CMA (Form A)

FOR MORSE TAPER DIN 228A - CHUCK PROVIDED WITH SCREW

PER CONO MORSE DIN 228A - MANDRINO FORNITO DI VITE

HSK DIN 69893

SAFE TAPPING ONLY TENSION TAP HOLDERS
*MANDRINO TRAZIONE RIDOTTA PER PROTEZIONE
MASCHIATURA*

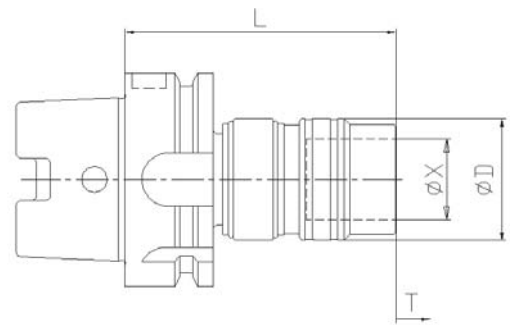


Part Number	Size	Tap Size	ØD	L	T	ØX
HSK63A-ST1-L80	1 - M3+M12	HSK-63	36	80	3	19
HSK63A-ST2-L116	2 - M8+M20	HSK-63	53	116	5	31
HSK80A-ST2-L116	2 - M8+M20	HSK-80	53	116	5	31

HSKA-ST (Form A)

SAFE TAPPING TOOLHOLDERS - QUICK CHANGE TAPPING CHUCKS

*TRAZIONE RIDOTTA PER PROTEZIONE MASCHIATURA - MANDRINI A CAMBIO
RAPIDO*



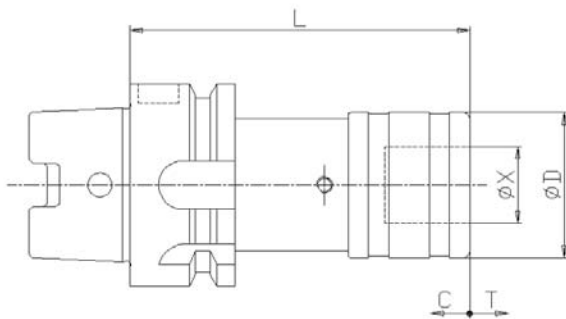
HSK DIN 69893



TENSION/COMPRESSION TAP HOLDERS

MANDRINO COMPENSATO ASSIALMENTE

Part Number	Size	Tap Size	L	ØD	ØX	C	T
HSK40A-TC1-L80	1 - M3÷M12	HSK-40	80	41	19	7,5	7,5
HSK40A-TC2-L103	2 - M8÷M20	HSK-40	103	60	31	10	10
HSK50A-TC1-L72	1 - M3÷M12	HSK-50	72	41	19	7,5	7,5
HSK50A-TC2-L110	2 - M8÷M20	HSK-50	110	60	31	10	10
HSK63A-TC1-L72	1 - M3÷M12	HSK-63	72	41	19	7,5	7,5
HSK63A-TC2-L110	2 - M8÷M20	HSK-63	110	60	31	10	10
HSK63A-TC3-L141	3 - M14÷M33	HSK-63	141	86	48	17,5	17,5
HSK80A-TC1-L72	1 - M3÷M12	HSK-80	72	41	19	7,5	7,5
HSK80A-TC2-L95	2 - M8÷M20	HSK-80	95	60	31	10	10
HSK80A-TC3-L141	3 - M14÷M33	HSK-80	141	86	48	17,5	17,5
HSK100A-TC1-L80	1 - M3÷M12	HSK-100	80	41	19	7,5	7,5
HSK100A-TC2-L100	2 - M8÷M20	HSK-100	100	60	31	10	10
HSK100A-TC3-L144	3 - M14÷M33	HSK-100	144	86	48	17,5	17,5



HSKA-TC (Form A)

MONOBLOC DESIGN - QUICK CHANGE TAPPING CHUCKS

INTEGRALE - MANDRINI A CAMBIO RAPIDO

HSK DIN 69893

ONLY TENSION TAP HOLDERS

MANDRINO COMPENSATO SOLO IN TRAZIONE

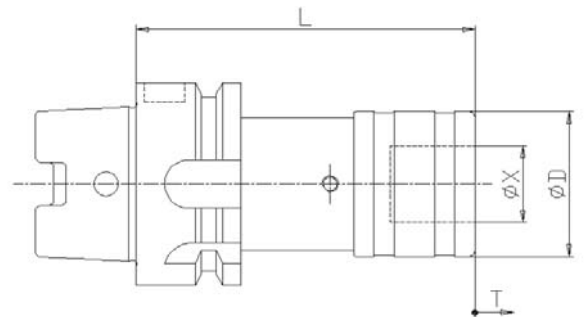
NEW

Part Number	Size	Tap Size	L	ØD	ØX	T
HSK40A-OT1-L77	1 - M3÷M12	HSK-40	77	41	19	12
HSK40A-OT2-L97	2 - M8÷M20	HSK-40	97	60	31	16
HSK50A-OT1-L68	1 - M3÷M12	HSK-50	68	41	19	12
HSK50A-OT2-L104	2 - M8÷M20	HSK-50	104	60	31	16
HSK63A-OT1-L68	1 - M3÷M12	HSK-63	68	41	19	12
HSK63A-OT2-L104	2 - M8÷M20	HSK-63	104	60	31	16
HSK63A-OT3-L130	3 - M14÷M33	HSK-63	130	86	48	30
HSK80A-OT1-L68	1 - M3÷M12	HSK-80	68	41	19	12
HSK80A-OT2-L89	2 - M8÷M20	HSK-80	89	60	31	16
HSK80A-OT3-L130	3 - M14÷M33	HSK-80	130	86	48	30
HSK100A-OT1-L76	1 - M3÷M12	HSK-100	76	41	19	12
HSK100A-OT2-L94	2 - M8÷M20	HSK-100	94	60	31	16
HSK100A-OT3-L133	3 - M14÷M33	HSK-100	133	86	48	30

HSKA-OT (Form A)

MONOBLOC DESIGN - QUICK CHANGE TAPPING CHUCKS

INTEGRALE - MANDRINI A CAMBIO RAPIDO



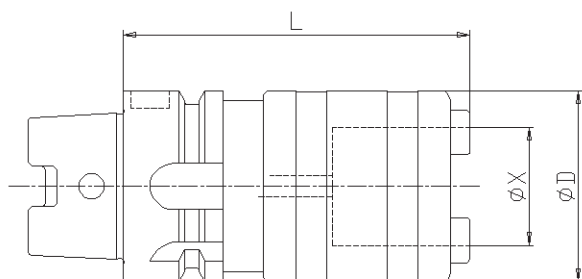
HSK DIN 69893



COOLANT-THRU RIGID TAP HOLDERS

MANDRINO RIGIDO CON PASSAGGIO REFRIGERANTE

Part Number	Size	Tap Size	ØD	L	ØX
HSK40A-R1-L57C	1 - M3÷M12	HSK-40	33	57	19
HSK40A-R2-L91C	2 - M8÷M20	HSK-40	50	91	31
HSK50A-R1-L63C	1 - M3÷M12	HSK-50	33	63	19
HSK50A-R2-L98C	2 - M8÷M20	HSK-50	50	98	31
HSK63A-R1-L63C	1 - M3÷M12	HSK-63	33	63	19
HSK63A-R2-L89C	2 - M8÷M20	HSK-63	50	89	31
HSK63A-R3-L129C	3 - M14÷M33	HSK-63	72	129	48
HSK80A-R1-L63C	1 - M3÷M12	HSK-80	33	63	19
HSK80A-R2-L89C	2 - M8÷M20	HSK-80	50	89	31
HSK80A-R3-L129C	3 - M14÷M33	HSK-80	72	129	48
HSK100A-R1-L69C	1 - M3÷M12	HSK-100	33	69	19
HSK100A-R2-L92C	2 - M8÷M20	HSK-100	50	92	31
HSK100A-R3-L116C	3 - M14÷M33	HSK-100	72	116	48



HSKA-R-C (Form A)

WITH CENTRAL COOLANT FLOW - MAX. COOLANT PRESSURE 50 BAR
 CON PASSAGGIO REFRIGERANTE CENTRALE - PRESSIONE MASSIMA 50 BAR

HSK DIN 69893

COOLANT-THRU TENSION/COMPRESSION TAP HOLDERS *COMPENSATO ASSIALMENTE CON PASSAGGIO REFRIGERANTE*

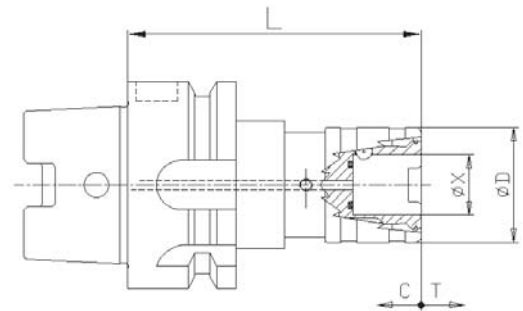


Part Number	Size	Tap Size	ØD	L	C	T	ØX
HSK40A-TC1-L104C	1 - M3÷M12	HSK-40	39	104	7,5	7,5	19
HSK40A-TC2-L140C	2 - M8÷M20	HSK-40	53	140	10	10	31
HSK50A-TC1-L105C	1 - M3÷M12	HSK-50	39	105	7,5	7,5	19
HSK50A-TC2-L140C	2 - M8÷M20	HSK-50	53	140	10	10	31
HSK63A-TC1-L105C	1 - M3÷M12	HSK-63	39	105	7,5	7,5	19
HSK63A-TC2-L140C	2 - M8÷M20	HSK-63	53	140	10	10	31

HSKA-TC-C (Form A)

COOLANT PRESSURE MAXIMUM 50 BAR - CENTRAL COOLANT FLOW - THESE
HOLDERS CAN BE USED WITH CENTRAL OR LATERAL COOLANT THROUGH
ADAPTORS

*PRESSIONE MASSIMA DEL REFRIGERANTE 50 BAR - REFRIGERANTE CENTRALE -
PER BUSSOLE PASSAGGIO REFRIGERANTE CENTRALE O LATERALE*

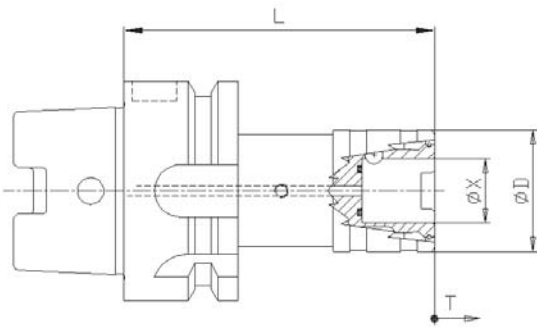


HSK DIN 69893

NEW

COOLANT-THRU ONLY TENSION TAP HOLDERS
*MANDRINO COMPENSATO SOLO IN TRAZIONE CON
PASSAGGIO REFRIGERANTE*

Part Number	Size	Tap Size	ØD	L	T	ØX
HSK40A-OT1-L96C	1 - M3÷M12	HSK-40	39	96	15	19
HSK40A-OT2-L130C	2 - M8÷M20	HSK-40	53	130	20	31
HSK50A-OT1-L98C	1 - M3÷M12	HSK-50	39	98	15	19
HSK50A-OT2-L130C	2 - M8÷M20	HSK-50	53	130	20	31
HSK63A-OT1-L98C	1 - M3÷M12	HSK-63	39	98	15	19
HSK63A-OT2-L130C	2 - M8÷M20	HSK-63	53	130	20	31



HSKA-OT-C (Form A)

COOLANT PRESSURE MAXIMUM 50 BAR - CENTRAL COOLANT FLOW - THESE
HOLDERS CAN BE USED WITH CENTRAL OR LATERAL COOLANT THROUGH
ADAPTORS

*PRESSIONE MASSIMA DEL REFRIGERANTE 50 BAR - REFRIGERANTE CENTRALE -
PER BUSSOLE PASSAGGIO REFRIGERANTE CENTRALE O LATERALE*

HSK DIN 69893

HYDRAULIC CHUCK

MANDRINO A BLOCCAGGIO IDRAULICO

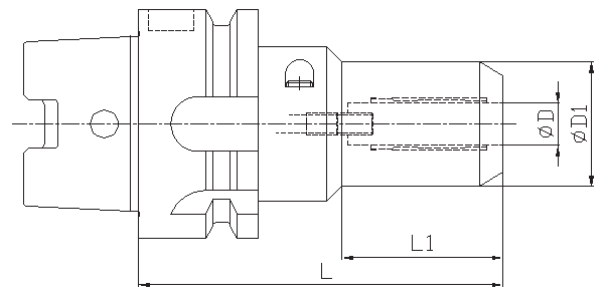
NEW

Part Number	Tap Size	ØD	ØD1	L	L1
HSK63A-SHC6-L70	HSK 63	6	26	70	24
HSK63A-SHC12-L85	HSK 63	12	32	85	40
HSK63A-SHC20-L90	HSK 63	20	42	90	48

HSKA-SHC (Form A)

RUN-OUT ACCURACY 0,010 mm - MAX CLAMPING TORQUE: Ø6 10 Nm - Ø12 50 Nm - Ø20 240 Nm

PRECISIONE DI CONCENTRICITA' 0,010 mm MAX - FORZA DI CHIUSURA: Ø6 10 Nm - Ø12 50 Nm - Ø20 240 Nm



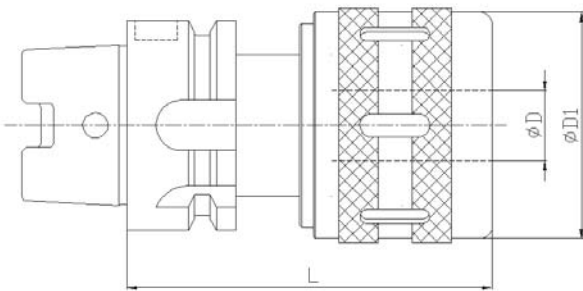
HSK DIN 69893

NEW

MILLING CHUCK

MANDRINO A FORTE SERRAGGIO

Part Number	Tap Size	ØD	ØD1	L
HSK63A-SMC20-L95	HSK 63	20	48	95
HSK63A-SMC32-L105	HSK 63	32	68	105
HSK100A-SMC32-L105	HSK 100	32	68	105



HSKA-SMC (Form A)

RUN-OUT ACCURACY 0,010 mm - MAX CHUCK PROVIDED WITH SPANNER
*PRECISIONE DI CONCENTRICITA' 0,010 mm MAX - MANDRINO FORNITO CON
CHIAVE DI SERRAGGIO*

HSK DIN 69893

SHRINK FIT TOOLHOLDERS - STANDARD LENGTH
 MANDRINO CON BLOCCAGGIO AD INDUZIONE TERMICA -
 LUNGHEZZA STANDARD

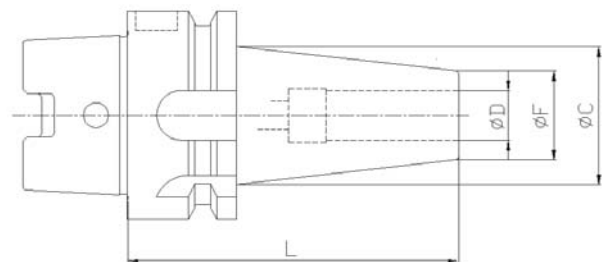


Part Number	Tap Size	ØD	L	C	F
HSK40A-SSF4-L70	HSK 40	4	70	15	10
HSK50A-SSF6-L76	HSK 50	6	76	17	12
HSK50A-SSF8-L76	HSK 50	8	76	22	17
HSK50A-SSF10-L76	HSK 50	10	76	24	19
HSK63A-SSF4-L76	HSK 63	4	76	15	10
HSK63A-SSF6-L76	HSK 63	6	76	17	12
HSK63A-SSF8-L76	HSK 63	8	76	22	17
HSK63A-SSF10-L76	HSK 63	10	76	24	19
HSK63A-SSF12-L76	HSK 63	12	76	27	22
HSK63A-SSF16-L76	HSK 63	16	76	31	26
HSK80A-SSF6-L101	HSK 80	6	101	20	12
HSK80A-SSF8-L101	HSK 80	8	101	25	17
HSK80A-SSF10-L101	HSK 80	10	101	27	19
HSK80A-SSF12-L101	HSK 80	12	101	33	22
HSK80A-SSF16-L101	HSK 80	16	101	37	26
HSK100A-SSF6-L104	HSK 100	6	104	20	12
HSK100A-SSF8-L104	HSK 100	8	104	25	17
HSK100A-SSF10-L104	HSK 100	10	104	27	19
HSK100A-SSF12-L104	HSK 100	12	104	33	22
HSK100A-SSF16-L104	HSK 100	16	104	37	26

HSKA-SSF (Form A)

PRE-BALANCED : HSK 40/50/63 = G 2,5 AT 20,000 RPM - EXTENDED
 LENGTH ON DEMAND

PRE-BILANCIATO : HSK 40/50/63 = G 2,5 A 20,000 GIRI - LUNGHEZZA ESTESA
 A RICHIESTA



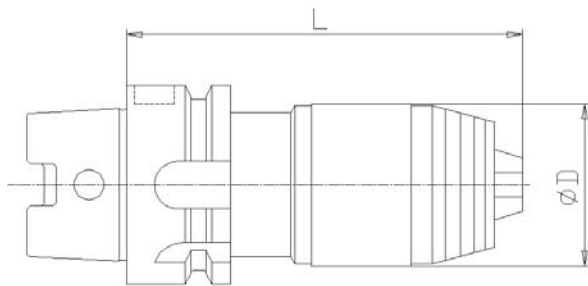
HSK DIN 69893



TAPER INTEGRAL KEYLESS DRILL CHUCKS

PORTAPUNTA INTEGRALE

Part Number	Tap Size	Capacity	ØD	L
HSK50A-SDCPU-113	HSK 50	1 ÷ 13	48	131
HSK63A-SDCPU-113	HSK 63	1 ÷ 13	48	131
HSK63A-SDCPU-316	HSK 63	3 ÷ 16	55	142
HSK80A-SDCPU-316	HSK 80	3 ÷ 16	55	145
HSK100A-SDCPU-316	HSK 100	3 ÷ 16	55	145



HSKA-SDCPU (Form A)

SHANK DRILL CHUCKS WITH SPANNER - SUPER PRECISION

MANDRINO FORNITO CON CHIAVE DI SERRAGGIO - ALTA PRECISIONE

HSK DIN 69893

BLANK BARS

STELO TENERO LAVORABILE

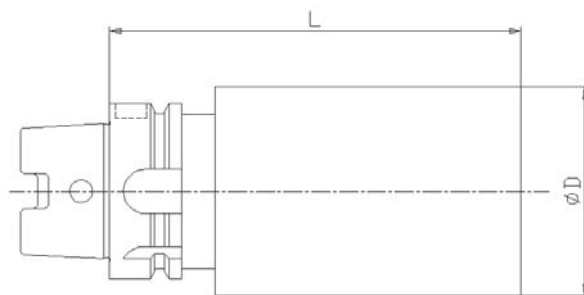


Part Number	Tap Size	ØD	L
HSK40A-SBB40-L150	HSK-40	40	150
HSK50A-SBB52-L200	HSK-50	52	200
HSK63A-SBB63-L250	HSK-63	63	250
HSK63A-SBB80-L250	HSK-63	80	250
HSK80A-SBB80-L250	HSK-80	80	250
HSK100A-SBB80-L250	HSK-100	80	250
HSK100A-SBB90-L250	HSK-100	90	250
HSK100A-SBB90-L300	HSK-100	90	300

HSKA-SBB (Form A)

BLANK END HRC 27-31 - BLANK PART CAN BE FINISHED BY THE USER

DUREZZA PARTE LAVORABILE HRC 27-31 - LA PARTE LAVORABILE PUO' ESSERE FINITA DALL' UTILIZZATORE



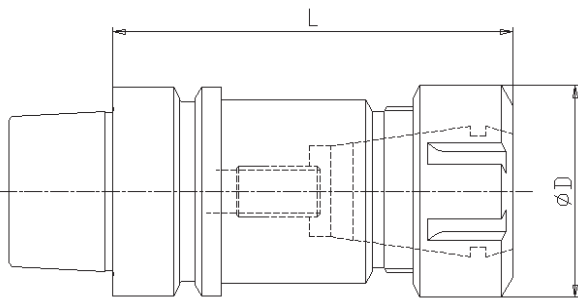
HSK DIN 69893

NEW

ER COLLET CHUCKS

PORTAPINZA ER

Part Number	Tap Size	Collet	Collet Range	L	ØD
HSK40E-ERS16-L60	HSK-40	ER 16	1 ÷ 10	60	32
HSK40E-ERS25-L70	HSK-40	ER 25	1 ÷ 16	70	42
HSK50E-ERS16-L100	HSK-50	ER 16	1 ÷ 10	100	32
HSK50E-ERS25-L100	HSK-50	ER 25	1 ÷ 16	100	42
HSK50E-ERS32-L100	HSK-50	ER 32	2 ÷ 20	100	50
HSK63E-ERS16-L100	HSK-63	ER 16	1 ÷ 10	100	32
HSK63E-ERS25-L100	HSK-63	ER 25	1 ÷ 16	100	42
HSK63E-ERS32-L100	HSK-63	ER 32	2 ÷ 20	100	50
HSK63E-ERS40-L100	HSK-63	ER 40	3 ÷ 30	100	63



HSKE-ERS (Form E)

PRE-BALANCED COLLET CHUCKS PROVIDED WITH BACK UP SCREW AND CLAMPING NUT

PRE-EQUILIBRATI - MANDRINO FORNITO DI VITE DI REGISTRAZIONE E GHIERA

HSK DIN 69893

ER MINI COLLET CHUCKS *PORTAPINZA ER GHIERA MINI*

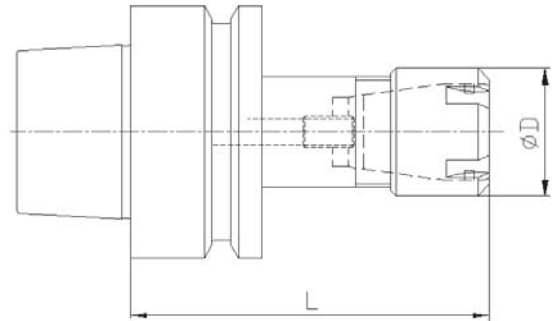
NEW

Part Number	Tap Size	Collet	Collet Range	L	ØD
HSK40E-ERS11M-L100	HSK-40	ER 11 MINI	1 ÷ 7	100	16
HSK40E-ERS16M-L100	HSK-40	ER 16 MINI	1 ÷ 10	100	22
HSK50E-ERS11M-L100	HSK-50	ER 11 MINI	1 ÷ 7	100	16
HSK50E-ERS16M-L100	HSK-50	ER 16 MINI	1 ÷ 10	100	22
HSK63E-ERS16M-L100	HSK-63	ER 16 MINI	1 ÷ 10	100	22
HSK63E-ERS25M-L100	HSK-63	ER 25 MINI	1 ÷ 16	100	32

HSKE-ERSM (Form E)

PRE-BALANCED COLLET CHUCKS PROVIDED WITH BACK UP SCREW AND CLAMPING NUT

PRE-EQUILIBRATI - MANDRINO FORNITO DI VITE DI REGISTRAZIONE E GHIERA



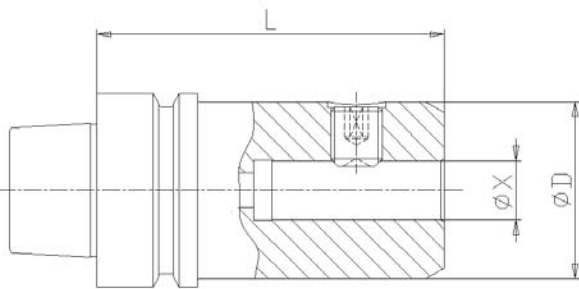
HSK DIN 69893

NEW

WELDON (DIN 1835 B) END MILL HOLDERS

PORTAFRESE TIPO WELDON (DIN 1835 B)

Part Number	Tap Size	ØX	L	ØD
HSK40E-WE6-L60	HSK-40	6	60	25
HSK40E-WE8-L60	HSK-40	8	60	28
HSK40E-WE10-L65	HSK-40	10	65	35
HSK40E-WE12-L70	HSK-40	12	70	40
HSK40E-WE16-L75	HSK-40	16	75	48
HSK50E-WE6-L65	HSK-50	6	65	25
HSK50E-WE8-L65	HSK-50	8	65	28
HSK50E-WE10-L65	HSK-50	10	65	35
HSK50E-WE12-L80	HSK-50	12	80	42
HSK50E-WE16-L80	HSK-50	16	80	48
HSK50E-WE20-L80	HSK-50	20	80	50
HSK63E-WE6-L65	HSK-63	6	65	25
HSK63E-WE8-L65	HSK-63	8	65	28
HSK63E-WE10-L65	HSK-63	10	65	35
HSK63E-WE12-L80	HSK-63	12	80	42
HSK63E-WE16-L80	HSK-63	16	80	48
HSK63E-WE20-L80	HSK-63	20	80	52
HSK63E-WE25-L110	HSK-63	25	110	63
HSK63E-WE32-L110	HSK-63	32	110	63



HSKE-WE (Form E)

PRE-BALANCED END MILL HOLDERS PROVIDED WITH SET SCREW(S)

PRE-EQUILIBRATI - MANDRINO FORNITO DI VITE/I

HSK DIN 69893

SCREW IN END MILL HOLDERS

MANDRINO PER FRESE CON ATTACCO FILETTATO

NEW

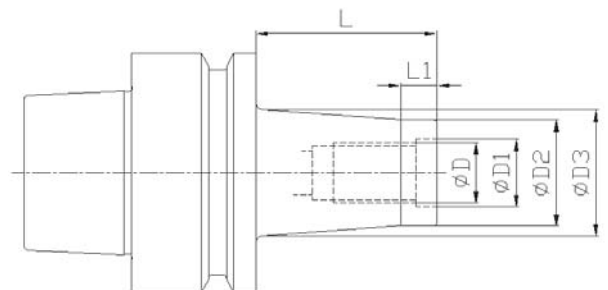
Part Number	Tap Size	ØD	ØD1	ØD2	ØD3	L	L1
HSK40E-M6-L33	HSK 40	M6	7	10	10	33	25
HSK40E-M6-L58	HSK 40	M6	7	10	20	58	10
HSK40E-M6-L83	HSK 40	M6	7	10	23	83	10
HSK40E-M8-L33	HSK 40	M8	9	13	15	33	10
HSK40E-M8-L58	HSK 40	M8	9	13	23	58	10
HSK40E-M8-L83	HSK 40	M8	9	13	23	83	10
HSK40E-M8-L108	HSK 40	M8	9	13	25	108	10
HSK40E-M10-L33	HSK 40	M10	11	18	20	33	10
HSK40E-M10-L58	HSK 40	M10	11	18	25	58	10
HSK40E-M10-L83	HSK 40	M10	11	18	28	83	10
HSK40E-M10-L108	HSK 40	M10	11	18	30	108	10
HSK40E-M12-L33	HSK 40	M12	13	21	24	33	10
HSK40E-M12-L58	HSK 40	M12	13	21	24	58	10
HSK40E-M12-L83	HSK 40	M12	13	21	31	83	10
HSK40E-M12-L108	HSK 40	M12	13	21	31	108	10
HSK50E-M6-L33	HSK 50	M6	7	10	10	33	25
HSK50E-M6-L58	HSK 50	M6	7	10	20	58	10
HSK50E-M6-L83	HSK 50	M6	7	10	23	83	10
HSK50E-M8-L33	HSK 50	M8	9	13	15	33	10
HSK50E-M8-L58	HSK 50	M8	9	13	23	58	10
HSK50E-M8-L83	HSK 50	M8	9	13	23	83	10
HSK50E-M8-L108	HSK 50	M8	9	13	25	108	10
HSK50E-M10-L33	HSK 50	M10	11	18	20	33	10
HSK50E-M10-L58	HSK 50	M10	11	18	25	58	10

continued / continua

HSKE-M (Form E)

PRE-BALANCED : HSK 40/50/63 = G 2,5 AT 20,000 RPM - EXTENDED LENGTH ON DEMAND

PRE-BILANCIATO : HSK 40/50/63 = G 2,5 A 20,000 GIRI - LUNGHEZZA ESTESA A RICHIESTA



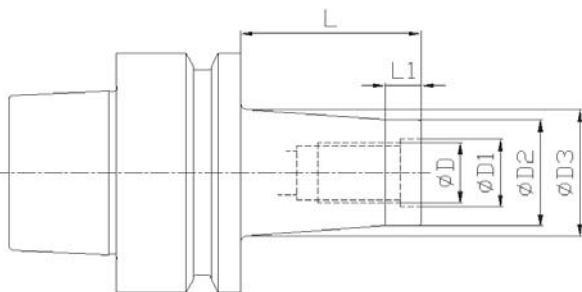
HSK DIN 69893

NEW

SCREW IN END MILL HOLDERS

MANDRINO PER FRESE CON ATTACCO FILETTATO

Part Number	Tap Size	ØD	ØD1	ØD2	ØD3	L	L1
HSK50E-M10-L83	HSK 50	M10	11	18	28	83	10
HSK50E-M10-L108	HSK 50	M10	11	18	30	108	10
HSK50E-M12-L33	HSK 50	M12	13	21	24	33	10
HSK50E-M12-L58	HSK 50	M12	13	21	24	58	10
HSK50E-M12-L83	HSK 50	M12	13	21	31	83	10
HSK50E-M12-L108	HSK 50	M12	13	21	31	108	10
HSK63E-M6-L33	HSK 63	M6	7	10	10	33	25
HSK63E-M6-L58	HSK 63	M6	7	10	20	58	10
HSK63E-M6-L83	HSK 63	M6	7	10	23	83	10
HSK63E-M8-L33	HSK 63	M8	9	13	15	33	10
HSK63E-M8-L58	HSK 63	M8	9	13	23	58	10
HSK63E-M8-L83	HSK 63	M8	9	13	23	83	10
HSK63E-M8-L108	HSK 63	M8	9	13	25	108	10
HSK63E-M10-L33	HSK 63	M10	11	18	20	33	10
HSK63E-M10-L58	HSK 63	M10	11	18	25	58	10
HSK63E-M10-L83	HSK 63	M10	11	18	28	83	10
HSK63E-M10-L108	HSK 63	M10	11	18	30	108	10
HSK63E-M12-L33	HSK 63	M12	13	21	24	33	10
HSK63E-M12-L58	HSK 63	M12	13	21	24	58	10
HSK63E-M12-L83	HSK 63	M12	13	21	31	83	10
HSK63E-M12-L108	HSK 63	M12	13	21	31	108	10
HSK63E-M16-L33	HSK 63	M16	17	29	34	33	10
HSK63E-M16-L58	HSK 63	M16	17	29	34	58	10
HSK63E-M16-L83	HSK 63	M16	17	29	34	83	10
HSK63E-M16-L108	HSK 63	M16	17	29	39	108	10



HSKE-M (Form E)

PRE-BALANCED : HSK 40/50/63 = G 2,5 AT 20,000 RPM - EXTENDED LENGTH ON DEMAND

PRE-BILANCIATO : HSK 40/50/63 = G 2,5 A 20,000 GIRI - LUNGHEZZA ESTESA A RICHIESTA

HSK DIN 69893

TENSION/COMPRESSION TAP HOLDERS
MANDRINO COMPENSATO ASSIALMENTE

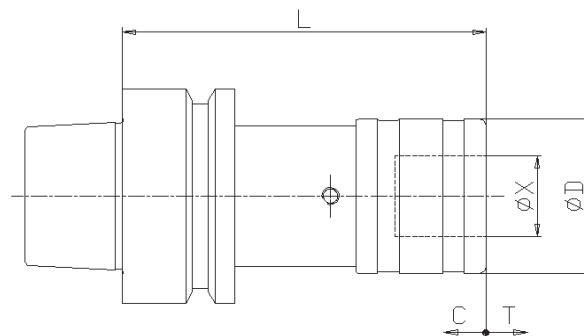
NEW

Part Number	Size	Tap Size	L	ØD	ØX	C	T
HSK40E-TC1-L80	1 - M3÷M12	HSK-40	80	41	19	7,5	7,5
HSK40E-TC2-L103	2 - M8÷M20	HSK-40	103	60	31	10	10
HSK50E-TC1-L72	1 - M3÷M12	HSK-50	72	41	19	7,5	7,5
HSK50E-TC2-L110	2 - M8÷M20	HSK-50	110	60	31	10	10
HSK63E-TC1-L72	1 - M3÷M12	HSK-63	72	41	19	7,5	7,5
HSK63E-TC2-L110	2 - M8÷M20	HSK-63	110	60	31	10	10

HSKE-TC (Form E)

MONOBLOC DESIGN - QUICK CHANGE TAPPING CHUCKS

INTEGRALE - MANDRINI A CAMBIO RAPIDO



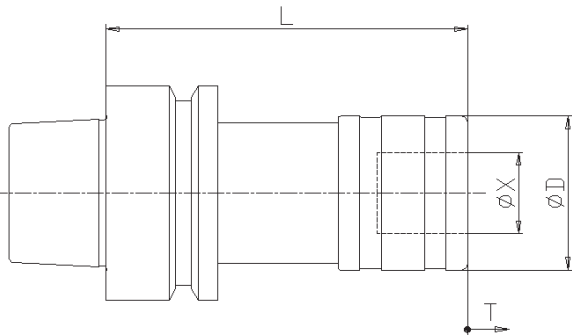
HSK DIN 69893

NEW

ONLY TENSION TAP HOLDERS

MANDRINO COMPENSATO SOLO IN TRAZIONE

Part Number	Size	Tap Size	L	ØD	ØX	T
HSK40E-OT1-L77	1 - M3÷M12	HSK-40	77	41	19	12
HSK40E-OT2-L97	2 - M8÷M20	HSK-40	97	60	31	16
HSK50E-OT1-L68	1 - M3÷M12	HSK-50	68	41	19	12
HSK50E-OT2-L104	2 - M8÷M20	HSK-50	104	60	31	16
HSK63E-OT1-L68	1 - M3÷M12	HSK-63	68	41	19	12
HSK63E-OT2-L104	2 - M8÷M20	HSK-63	104	60	31	16



HSKE-OT (Form E)

MONOBLOC DESIGN - QUICK CHANGE TAPPING CHUCKS

INTEGRALE - MANDRINI A CAMBIO RAPIDO

HSK DIN 69893

COOLANT-THRU RIGID TAP HOLDERS

MANDRINO RIGIDO CON PASSAGGIO REFRIGERANTE

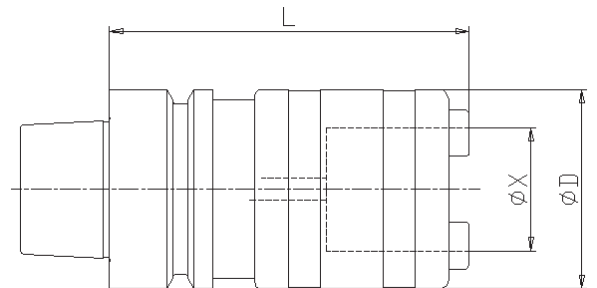
NEW

Part Number	Size	Tap Size	ØD	L	ØX
HSK40E-R1-L57C	1 - M3÷M12	HSK-40	33	57	19
HSK40E-R2-L91C	2 - M8÷M20	HSK-40	50	91	31
HSK50E-R1-L63C	1 - M3÷M12	HSK-50	33	63	19
HSK50E-R2-L98C	2 - M8÷M20	HSK-50	50	98	31
HSK63E-R1-L63C	1 - M3÷M12	HSK-63	33	63	19
HSK63E-R2-L89C	2 - M8÷M20	HSK-63	50	89	31
HSK63E-R3-L129C	3 - M14÷M33	HSK-63	72	129	48

HSKE-R-C (Form E)

WITH CENTRAL COOLANT FLOW - MAX COOLANT PRESSURE 50 BAR

CON PASSAGGIO REFRIGERANTE CENTRALE - PRESSIONE MASSIMA 50 BAR

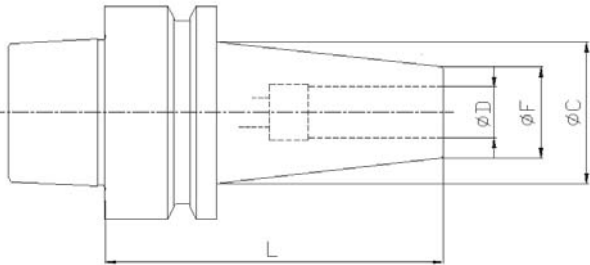


HSK DIN 69893



SHRINK FIT TOOLHOLDERS - STANDARD LENGTH MANDRINO CON BLOCCAGGIO AD INDUZIONE TERMICA - LUNGHEZZA STANDARD

Part Number	Tap Size	ØD	L	C	F
HSK40E-SSF4-L70	HSK 40	4	70	15	10
HSK40E-SSF6-L70	HSK 40	6	70	17	12
HSK40E-SSF8-L70	HSK 40	8	70	22	17
HSK40E-SSF10-L70	HSK 40	10	70	24	19
HSK50E-SSF4-L76	HSK 50	4	76	15	10
HSK50E-SSF6-L76	HSK 50	6	76	17	12
HSK50E-SSF8-L76	HSK 50	8	76	22	17
HSK50E-SSF10-L76	HSK 50	10	76	24	19
HSK63E-SSF4-L76	HSK 63	4	76	15	10
HSK63E-SSF6-L76	HSK 63	6	76	17	12
HSK63E-SSF8-L76	HSK 63	8	76	22	17
HSK63E-SSF10-L76	HSK 63	10	76	24	19
HSK63E-SSF12-L76	HSK 63	12	76	27	22
HSK63E-SSF16-L76	HSK 63	16	76	31	26



HSKE-SSF (Form E)

PRE-BALANCED : HSK 40/50/63 = G 2,5 AT 20,000 RPM - EXTENDED
LENGTH ON DEMAND

PRE-BILANCIATO : HSK 40/50/63 = G 2,5 A 20,000 GIRI - LUNGHEZZA ESTESA
A RICHIESTA

HSK DIN 69893

DIMENSIONS

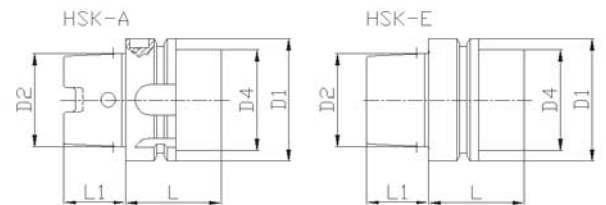
DIMENSIONI

Tap Size	ØD1	ØD2	ØD4	L	L1
HSK-50	50	38	42 MAX	42 MIN	25
HSK-63	63	48	53 MAX	42 MIN	32
HSK-80	80	60	67 MAX	42 MIN	40
HSK-100	100	75	85 MAX	45 MIN	50

HSK A/E

HSK A/E DIN 69893

HSK A/E DIN 69893



Seinco Components s.r.l.

Via della Basilica, 2

10122 - Torino - Italy

P.Iva - Vat : 09226290014

Tel. : +39 011 4361658

Fax : +39 011 4361658

e-mail : sales@seincosrl.com

<http://www.seincosrl.com>