



⑥ DIN 228

CMA-ERS (Form A) ER COLLET CHUCK <i>PORTAPINZA ER</i>	6.4
CMA-ERSM (Form A) ER MINI COLLET CHUCK <i>PORTAPINZA ER CON GHIERA MINI</i>	6.5
CMA-C (Form A) COMBI SHELL MILL HOLDERS <i>PORTAFRESA COMBINATO UNIVERSALE</i>	6.6
CMA-TC (Form A) TENSION/COMPRESSION TAP HOLDERS <i>MANDRINO COMPENSATO ASSIALMENTE</i>	6.7
CMA-R (Form A) RIGID TAP HOLDERS <i>MANDRINO RIGIDO</i>	6.8
CMA-DC (Form A) DEAD CENTRES <i>CONTROPUNTA FISSA IN ACCIAIO PER TORNIO</i>	6.9
CMA-DCCT (Form A) DEAD CENTRES CARBIDE TIPPED <i>CONTROPUNTA FISSA IN ACCIAIO PER RETTIFICA</i>	6.10
CMB-TC (Form B) TENSION/COMPRESSION TAP HOLDERS <i>MANDRINO COMPENSATO ASSIALMENTE</i>	6.11

CMB-R (Form B) RIGID TAP HOLDERS <i>MANDRINO RIGIDO</i>	6.12
CMB-SFH (Form B) FLOATING HOLDER <i>MANDRINO FLOTTANTE</i>	6.13
CMB-RP (Form B) RIGID TAP HOLDERS WITH RADIAL PARALLEL FLOAT <i>MANDRINO RIGIDO CON GIOCO RADIALE</i>	6.14
CMB-C (Form B) LENGHT COMPENSATION ON COMPRESSION <i>COMPENSATO SOLO IN COMPRESSIONE</i>	6.15
CMB-CT (Form B) LENGHT COMPENSATION ON COMPRESSION/EXPANSION <i>COMPENSATO IN COMPRESSIONE E TRAZIONE</i>	6.16
CMB-CP (Form B) ONLY COMPRESSION WITH RADIAL PARALLEL FLOAT <i>COMPENSATO SOLO IN COMPRESSIONE CON GIOCO RADIALE</i>	6.18
CMB-CTP (Form B) COMPRESSION/EXPANSION WITH RADIAL PARALLEL FLOAT <i>COMPENSATO IN COMPRESSIONE E TRAZIONE CON GIOCO RADIALE</i>	6.19
CMB-SW (Form B) TAP HOLDERS SOLID TYPE <i>MANDRINO RIGIDO PER LAVORAZIONI CICLICHE</i>	6.21

DIN 228

CMB-CM (Form B)

REDUCING SLEEVES

BUSSOLA DI RIDUZIONE PER CONI MORSE

6.28

CMB-XCM (Form B)

EXTENSIONS SLEEVES

PROLUNGA PER CONI MORSE

6.29

CMB-BJ (Form B)

TAPER SHANK ARBORS FOR DRILL CHUCKS

ATTACCHI PER MANDRINI AUTOSERRANTI

6.30

DIN 228/A

DIMENSIONS

DIMENSIONI

6.32

DIN 228/B

DIMENSIONS

DIMENSIONI

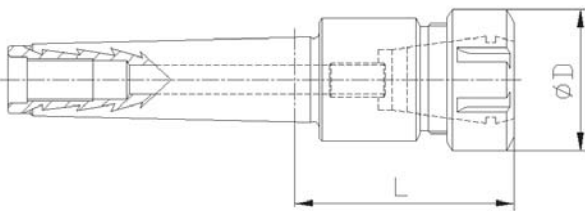
6.33

NEW

ER COLLET CHUCK

PORTAPINZA ER

Part Number	Tap Size	Collet	Collet Range	L	ØD
CM1A-ERS11-L25	CM 1	ER 11	1 ÷ 7	25	18
CM1A-ERS16-L40	CM 1	ER 16	1 ÷ 10	40	28
CM2A-ERS16-L42	CM 2	ER 16	1 ÷ 10	42	28
CM2A-ERS20-L50	CM 2	ER 20	1 ÷ 13	50	34
CM2A-ERS25-L54	CM 2	ER 25	1 ÷ 16	54	42
CM3A-ERS16-L50	CM 3	ER 16	1 ÷ 10	50	28
CM3A-ERS20-L50	CM 3	ER 20	1 ÷ 13	50	34
CM3A-ERS25-L53	CM 3	ER 25	1 ÷ 16	53	42
CM3A-ERS32-L70	CM 3	ER 32	2 ÷ 20	70	50
CM3A-ERS40-L80	CM 3	ER 40	3 ÷ 30	80	63
CM4A-ERS25-L56	CM 4	ER 25	1 ÷ 16	56	42
CM4A-ERS32-L60	CM 4	ER 32	2 ÷ 20	60	50
CM4A-ERS40-L81	CM 4	ER 40	3 ÷ 30	81	63
CM4A-ERS50-L96	CM 4	ER 50	6 ÷ 34	96	78
CM5A-ERS32-L50	CM 5	ER 32	2 ÷ 20	50	50
CM5A-ERS40-L82	CM 5	ER 40	3 ÷ 30	82	63
CM5A-ERS50-L91	CM 5	ER 50	6 ÷ 34	91	78



CMA-ERS (Form A)

WITH PRE-BALANCED NUTS - COLLET CHUCKS PROVIDED WITH BACK UP
SCREW AND CLAMPING NUT

CON GHIERE PRE-BILANCIATE - MANDRINO FORNITO DI VITE DI REGISTRAZIONE E
GHIERA

DIN 228

ER MINI COLLET CHUCK *PORTAPINZA ER CON GHIERA MINI*

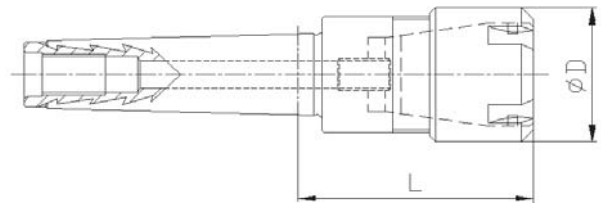
NEW

Part Number	Tap Size	Collet	Collet Range	L	ØD
CM1A-ERS11M-L25	CM 1	ER 11 MINI	1 ÷ 7	25	16
CM1A-ERS16M-L40	CM 1	ER 16 MINI	1 ÷ 10	40	22
CM2A-ERS16M-L42	CM 2	ER 16 MINI	1 ÷ 10	42	22
CM2A-ERS20M-L50	CM 2	ER 20 MINI	1 ÷ 13	50	28
CM2A-ERS25M-L54	CM 2	ER 25 MINI	1 ÷ 16	54	35
CM3A-ERS16M-L43	CM 3	ER 16 MINI	1 ÷ 10	43	22
CM3A-ERS20M-L47	CM 3	ER 20 MINI	1 ÷ 13	47	28
CM3A-ERS25M-L58	CM 3	ER 25 MINI	1 ÷ 16	58	35

CMA-ERSM (Form A)

WITH PRE-BALANCED NUTS - COLLET CHUCKS PROVIDED WITH BACK UP
SCREW AND CLAMPING NUT

*CON GHIERE PRE-BILANCIATE - MANDRINO FORNITO DI VITE DI REGISTRAZIONE E
GHIERA*



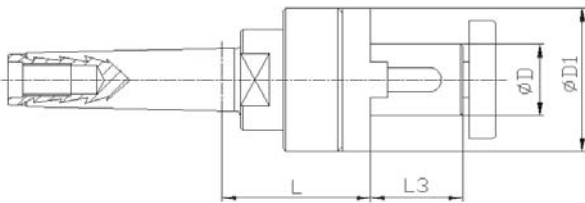
DIN 228

NEW

COMBI SHELL MILL HOLDERS

PORTAFRESA COMBINATO UNIVERSALE

Part Number	Tap Size	ØD	ØD1	L	L3
CM3A-C16-L48	CM 3	16	32	48	17
CM3A-C22-L48	CM 3	22	40	48	19
CM3A-C22-L63	CM 3	22	40	63	19
CM3A-C27-L63	CM 3	27	48	63	21
CM3A-C32-L63	CM 3	32	58	63	24
CM4A-C16-L70	CM 4	16	32	70	17
CM4A-C22-L70	CM 4	22	40	70	19
CM4A-C27-L70	CM 4	27	48	70	21
CM4A-C32-L70	CM 4	32	58	70	24
CM4A-C40-L70	CM 4	40	70	70	27
CM5A-C22-L75	CM 5	22	40	75	19
CM5A-C27-L75	CM 5	27	48	75	21
CM5A-C32-L75	CM 5	32	58	75	24
CM5A-C40-L75	CM 5	40	70	75	27



CMA-C (Form A)

DIN 6358/B SHELL MILL HOLDERS PROVIDED WITH ARBOR SCREW, FEATHER KEY AND DRIVE RING

DIN 6358/B - MANDRINO FORNITO DI VITE DI SERRAGGIO, ANELLO DI TRASCINAMENTO E LINGUETTA

DIN 228

TENSION/COMPRESSION TAP HOLDERS MANDRINO COMPENSATO ASSIALMENTE

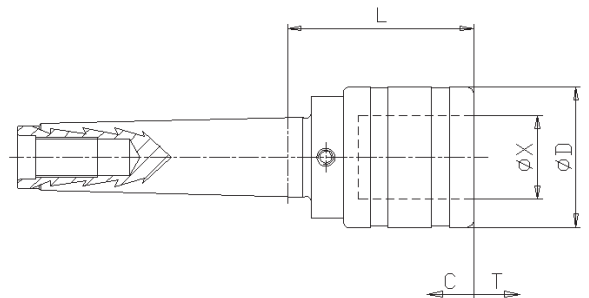


Part Number	Size	Tap Size	ØD	L	ØX	C	T
CM2A-TC0-L45	0 - M1÷M10	CM2	26	45	13	6,5	6,5
CM2A-TC1-L47	1 - M3÷M12	CM2	36	47	19	7,5	7,5
CM3A-TC1-L47	1 - M3÷M12	CM3	36	47	19	7,5	7,5
CM3A-TC2-L71	2 - M8÷M20	CM3	53	71	31	12,5	12,5
CM4A-TC2-L72	2 - M8÷M20	CM4	53	72	31	12,5	12,5
CM4A-TC3-L105	3 - M14÷M33	CM4	78	105	48	20	20
CM5A-TC3-L106	3 - M14÷M33	CM5	78	106	48	20	20
CM5A-TC4-L117	4 - M22÷M48	CM5	96	117	60	22,5	22,5
CM5A-TC5-L183	5 - M33÷M68	CM5	130	183	78	30	30
CM6A-TC4-L119	4 - M22÷M48	CM6	96	119	60	22,5	22,5
CM6A-TC5-L165	5 - M33÷M68	CM6	130	165	78	30	30

CMA-TC (Form A)

MONOBLOC DESIGN - QUICK CHANGE TAPPING CHUCKS

INTEGRALE - MANDRINI A CAMBIO RAPIDO

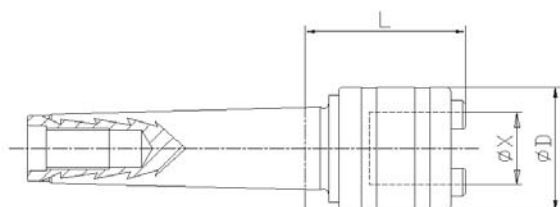


DIN 228



RIGID TAP HOLDERS *MANDRINO RIGIDO*

Part Number	Size	Tap Size	$\varnothing X$	$\varnothing D$	L
CM2A-R1-L45	1 - M3÷M12	CM 2	19	33	45
CM2A-R2-L61	2 - M8÷M20	CM 2	31	50	61
CM3A-R1-L45	1 - M3÷M12	CM 3	19	33	45
CM3A-R2-L61	2 - M8÷M20	CM 3	31	50	61



CMA-R (Form A)

MONOBLOC DESIGN - QUICK CHANGE TAPPING CHUCKS

INTEGRALE - MANDRINI A CAMBIO RAPIDO

DIN 228

DEAD CENTRES

CONTROPUNTA FISSA IN ACCIAIO PER TORNIO

NEW

Part Number	Tap Size	ØD2	ØD3	L1	L
CM0A-DC-L70	CM 0	9,2	0,5	50	70
CM1A-DC-L80	CM 1	12,2	0,5	53,5	80
CM2A-DC-L100	CM 2	18	0,8	64	100
CM3A-DC-L125	CM 3	24,1	0,8	81	125
CM4A-DC-L160	CM 4	31,6	1	102,5	160
CM5A-DC-L200	CM 5	44,7	1,6	129,5	200
CM6A-DC-L270	CM 6	63,8	2	182	270

CMA-DC (Form A)

DIN 806 COMPLETELY HARDENED AND GROUND

DIN 806 - COMPLETAMENTE TEMPERATA E RETTIFICATA



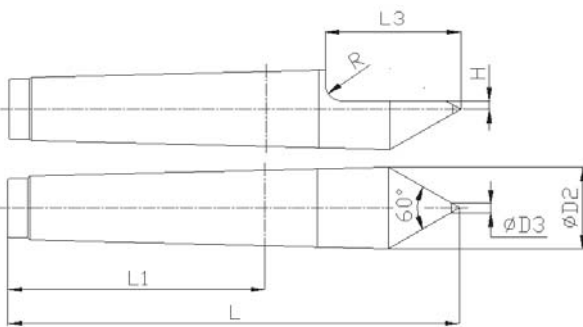
DIN 228

NEW

DEAD CENTRES CARBIDE TIPPED

CONTROPUNTA FISSA IN ACCIAIO PER RETTIFICA

Part Number	Tap Size	ØD2	ØD3	H	L1	L	L3	R
CM1A-DCCT-L80	CM 1	12,2	0,5	1,5	53,5	80	22	2,5
CM2A-DCCT-L100	CM 2	18	0,8	2	64	100	30	4
CM3A-DCCT-L125	CM 3	24,1	0,8	3	81	125	38	4
CM4A-DCCT-L160	CM 4	31,6	1	5	102,5	160	50	6
CM5A-DCCT-L200	CM 5	44,7	1,6	7	129,5	200	63	6
CM6A-DCCT-L270	CM 6	63,8	2	10	182	270	79	10



CMA-DCCT (Form A)

DIN 806 COMPLETELY HARDENED AND GROUND

DIN 806 - COMPLETAMENTE TEMPERATA E RETTIFICATA

DIN 228

TENSION/COMPRESSION TAP HOLDERS *MANDRINO COMPENSATO ASSIALMENTE*

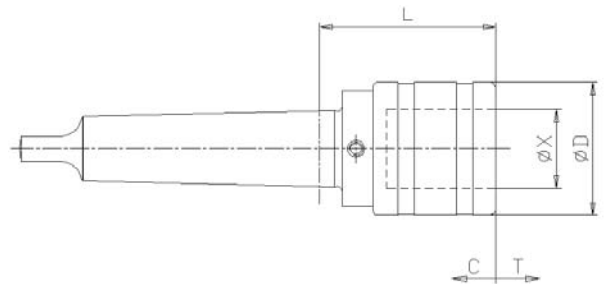


Part Number	Size	Tap Size	ØD	L	ØX	C	T
CM2B-TC0-L45	0 - M1÷M10	CM2	26	45	13	6,5	6,5
CM2B-TC1-L47	1 - M3÷M12	CM2	36	47	19	7,5	7,5
CM3B-TC1-L47	1 - M3÷M12	CM3	36	47	19	7,5	7,5
CM3B-TC2-L71	2 - M8÷M20	CM3	53	71	31	12,5	12,5
CM4B-TC2-L72	2 - M8÷M20	CM4	53	72	31	12,5	12,5
CM4B-TC3-L105	3 - M14÷M33	CM4	78	105	48	20	20
CM5B-TC3-L106	3 - M14÷M33	CM5	78	106	48	20	20
CM5B-TC4-L117	4 - M22÷M48	CM5	96	117	60	22,5	22,5
CM5B-TC5-L183	5 - M33÷M68	CM5	130	183	78	30	30
CM6B-TC4-L119	4 - M22÷M48	CM6	96	119	60	22,5	22,5
CM6B-TC5-L165	5 - M33÷M68	CM6	130	165	78	30	30

CMB-TC (Form B)

MONOBLOC DESIGN QUICK CHANGE TAPPING CHUCKS

INTEGRALE - MANDRINI A CAMBIO RAPIDO



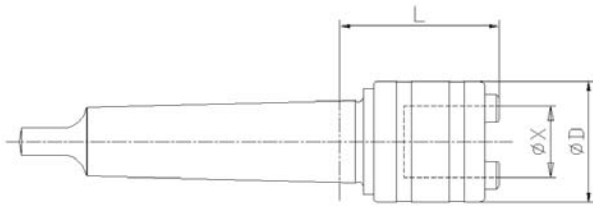
DIN 228



RIGID TAP HOLDERS

MANDRINO RIGIDO

Part Number	Size	Tap Size	ØX	ØD	L
CM1B-R0-L39	0 - M1÷M10	CM 1	13	23	35
CM2B-R0-L40	0 - M1÷M10	CM 2	13	23	37
CM2B-R1-L45	1 - M3÷M12	CM 2	19	33	45
CM2B-R2-L61	2 - M8÷M20	CM 2	31	50	61
CM3B-R1-L45	1 - M3÷M12	CM 3	19	33	45
CM3B-R2-L61	2 - M8÷M20	CM 3	31	50	61
CM4B-R2-L61	2 - M8÷M20	CM 4	31	50	61
CM4B-R3-L92	3 - M14÷M33	CM 4	48	72	92



CMB-R (Form B)

MONOBLOC DESIGN - QUICK CHANGE TAPPING CHUCKS

INTEGRALE - MANDRINI A CAMBIO RAPIDO

DIN 228

FLOATING HOLDER MANDRINO FLOTTANTE

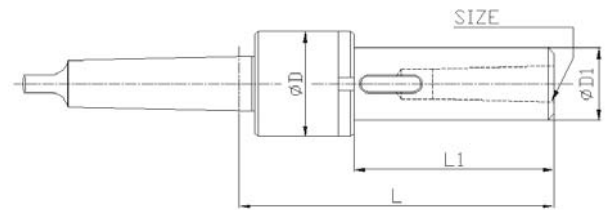
NEW

Part Number	Tap Size	Size	Float	ØD	ØD1	L	L1
CM1B-SFH1-L106	CM 1	CM 1	0,5	32	16	106	73
CM2B-SFH1-L106	CM 2	CM 1	0,5	32	16	106	73
CM2B-SFH2-L127	CM 2	CM 2	0,5	40	24	127	87
CM3B-SFH2-L125	CM 3	CM 2	0,5	40	24	125	87
CM3B-SFH3-L152	CM 3	CM 3	1	50	32	152	109
CM4B-SFH3-L153	CM 4	CM 3	1	50	32	153	109
CM4B-SFH4-L189	CM 4	CM 4	1,5	67	42	189	134
CM5B-SFH4-L189	CM 5	CM 4	1,5	67	42	189	134
CM5B-SFH5-L232	CM 5	CM 5	1,5	88	58	232	166
CM6B-SFH5-L234	CM 6	CM 5	1,5	88	58	234	166

CMB-SFH (Form B)

WITH RADIAL PARALLEL FLOAT FOR REAMING TOOLS

CON GIOCO RADIALE INDICATO PER ALESATORI



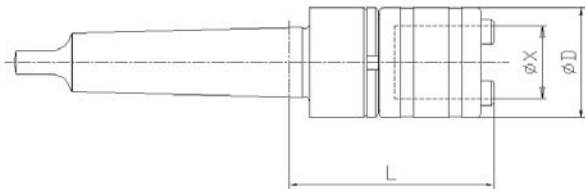
DIN 228



RIGID TAP HOLDERS WITH RADIAL PARALLEL FLOAT

MANDRINO RIGIDO CON GIOCO RADIALE

Part Number	Size	Tap Size	ØX	ØD	L	Float
CM1B-RP0-L59	0 - M1÷M10	CM 1	13	23	59	0,25
CM1B-RP1-L64	1 - M3÷M12	CM 1	19	32	64	0,5
CM2B-RP0-L60	0 - M1÷M10	CM 2	13	23	60	0,25
CM2B-RP1-L65	1 - M3÷M12	CM 2	19	32	65	0,5
CM2B-RP2-L91	2 - M8÷M20	CM 2	31	50	91	1
CM2B-RP40-L84	40 - M6÷M18	CM 2	26	40	84	1,5
CM3B-RP1-L65	1 - M3÷M12	CM 3	19	32	65	0,5
CM3B-RP2-L91	2 - M8÷M20	CM 3	31	50	91	1
CM3B-RP3-L131	3 - M14÷M33	CM 3	48	72	131	1,5
CM3B-RP40-L84	40 - M6÷M18	CM 3	26	40	84	1,5
CM4B-RP2-L92	2 - M8÷M20	CM 4	31	50	92	1
CM4B-RP3-L132	3 - M14÷M33	CM 4	48	72	132	1,5
CM4B-RP4-L161	4 - M22÷M48	CM 4	60	95	161	1,5
CM5B-RP3-L133	3 - M14÷M33	CM 5	48	72	133	1,5
CM5B-RP4-L162	4 - M22÷M48	CM 5	60	95	162	1,5



CMB-RP (Form B)

MONOBLOC DESIGN - QUICK CHANGE TAPPING CHUCKS

INTEGRALE - MANDRINI A CAMBIO RAPIDO

DIN 228

LENGHT COMPENSATION ON COMPRESSION COMPENSATO SOLO IN COMPRESSIONE

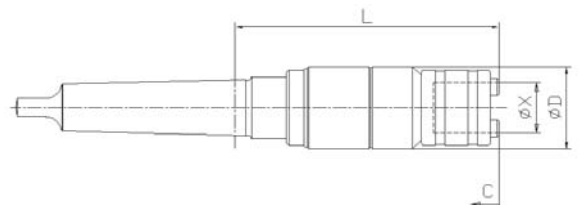
NEW

Part Number	Size	Tap Size	ØX	ØD	L	C
CM1B-C0-20-00	0 - M1÷M10	CM 1	13	23	101	20
CM1B-C0-30-00	0 - M1÷M10	CM 1	13	23	121	30
CM1B-C1-30-00	1 - M3÷M12	CM 1	19	35	133	30
CM1B-C1-40-00	1 - M3÷M12	CM 1	19	35	153	40
CM2B-C0-20-00	0 - M1÷M10	CM 2	13	23	102	20
CM2B-C0-30-00	0 - M1÷M10	CM 2	13	23	122	30
CM2B-C1-30-00	1 - M3÷M12	CM 2	19	35	134	30
CM2B-C1-40-00	1 - M3÷M12	CM 2	19	35	154	40
CM2B-C2-30-00	2 - M8÷M20	CM 2	31	50	158	30
CM2B-C2-40-00	2 - M8÷M20	CM 2	31	50	178	40
CM2B-C40-40-00	40 - M6÷M18	CM 2	26	40	171	40
CM3B-C1-30-00	1 - M3÷M12	CM 3	19	35	134	30
CM3B-C1-40-00	1 - M3÷M12	CM 3	19	35	154	40
CM3B-C2-30-00	2 - M8÷M20	CM 3	31	50	158	30
CM3B-C2-40-00	2 - M8÷M20	CM 3	31	50	178	40
CM3B-C3-30-00	3 - M14÷M33	CM 3	48	72	204	30
CM3B-C3-40-00	3 - M14÷M33	CM 3	48	72	224	40
CM3B-C40-40-00	40 - M6÷M18	CM 3	26	40	171	40
CM4B-C2-30-00	2 - M8÷M20	CM 4	31	50	159	30
CM4B-C2-40-00	2 - M8÷M20	CM 4	31	50	179	40
CM4B-C3-30-00	3 - M14÷M33	CM 4	48	72	205	30
CM4B-C3-40-00	3 - M14÷M33	CM 4	48	72	225	40
CM4B-C4-60-00	4 - M22÷M48	CM 4	60	95	289	60
CM5B-C4-60-00	4 - M22÷M48	CM 5	60	95	290	60

CMB-C (Form B)

MONOBLOC DESIGN - QUICK CHANGE TAPPING CHUCKS

INTEGRALE - MANDRINI A CAMBIO RAPIDO



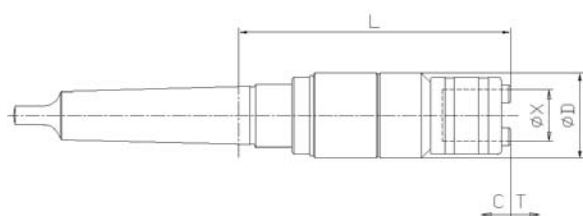
DIN 228

NEW

LENGHT COMPENSATION ON COMPRESSION/EXPANSION

COMPENSATO IN COMPRESSIONE E TRAZIONE

Part Number	Size	Tap Size	ØX	ØD	L	C	T
CM1B-CT0-20-10	0 - M1÷M10	CM 1	13	23	111	20	10
CM1B-CT0-15-15	0 - M1÷M10	CM 1	13	23	106	15	15
CM1B-CT0-00-30	0 - M1÷M10	CM 1	13	23	91	0	30
CM1B-CT1-30-10	1 - M3÷M12	CM 1	19	35	143	30	10
CM1B-CT1-20-20	1 - M3÷M12	CM 1	19	35	133	20	20
CM1B-CT1-00-40	1 - M3÷M12	CM 1	19	35	113	0	40
CM2B-CT0-20-10	0 - M1÷M10	CM 2	13	23	112	20	10
CM2B-CT0-15-15	0 - M1÷M10	CM 2	13	23	107	15	15
CM2B-CT0-00-30	0 - M1÷M10	CM 2	13	23	92	0	30
CM2B-CT1-30-10	1 - M3÷M12	CM 2	19	35	144	30	10
CM2B-CT1-20-20	1 - M3÷M12	CM 2	19	35	134	20	20
CM2B-CT1-00-40	1 - M3÷M12	CM 2	19	35	114	0	40
CM2B-CT2-30-10	2 - M8÷M20	CM 2	31	50	168	30	10
CM2B-CT2-20-20	2 - M8÷M20	CM 2	31	50	158	20	20
CM2B-CT2-00-40	2 - M8÷M20	CM 2	31	50	138	0	40
CM2B-CT40-30-10	40 - M6÷M18	CM 2	26	40	161	30	10
CM2B-CT40-20-20	40 - M6÷M18	CM 2	26	40	151	20	20
CM2B-CT40-00-40	40 - M6÷M18	CM 2	26	40	131	0	40
CM3B-CT1-30-10	1 - M3÷M12	CM 3	19	35	144	30	10
CM3B-CT1-20-20	1 - M3÷M12	CM 3	19	35	134	20	20
CM3B-CT1-00-40	1 - M3÷M12	CM 3	19	35	114	0	40
CM3B-CT2-30-10	2 - M8÷M20	CM 3	31	50	168	30	10
CM3B-CT2-20-20	2 - M8÷M20	CM 3	31	50	158	20	20
CM3B-CT2-00-40	2 - M8÷M20	CM 3	31	50	138	0	40
continued / continua							



CMB-CT (Form B)

MONOBLOC DESIGN - QUICK CHANGE TAPPING CHUCKS

INTEGRALE - MANDRINI A CAMBIO RAPIDO

DIN 228

LENGHT COMPENSATION ON COMPRESSION/EXPANSION *COMPENSATO IN COMPRESSIONE E TRAZIONE*

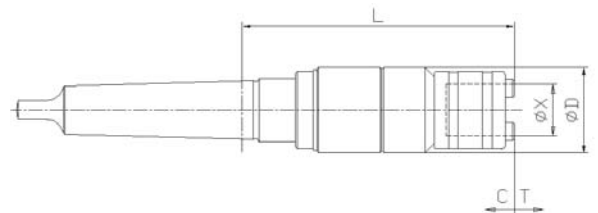
NEW

Part Number	Size	Tap Size	ØX	ØD	L	C	T
CM3B-CT3-30-10	3 - M14÷M33	CM 3	48	72	214	30	10
CM3B-CT3-20-20	3 - M14÷M33	CM 3	48	72	204	20	20
CM3B-CT3-00-40	3 - M14÷M33	CM 3	48	72	184	0	40
CM3B-CT40-30-10	40 - M6÷M18	CM 3	26	40	161	30	10
CM3B-CT40-20-20	40 - M6÷M18	CM3	26	40	151	20	20
CM3B-CT40-00-40	40 - M6÷M18	CM 3	26	40	131	0	40
CM4B-CT2-30-10	2 - M8÷M20	CM 4	31	50	169	30	10
CM4B-CT2-20-20	2 - M8÷M20	CM 4	31	50	159	20	20
CM4B-CT2-00-40	2 - M8÷M20	CM 4	31	50	139	0	40
CM4B-CT3-30-10	3 - M14÷M33	CM 4	48	72	215	30	10
CM4B-CT3-20-20	3 - M14÷M33	CM 4	48	72	205	20	20
CM4B-CT3-00-40	3 - M14÷M33	CM 4	48	72	185	0	40
CM4B-CT4-40-20	4 - M22÷M48	CM 4	60	95	269	40	20
CM4B-CT4-30-30	4 - M22÷M48	CM 4	60	95	259	30	30
CM4B-CT4-00-60	4 - M22÷M48	CM 4	60	95	229	0	60
CM5B-CT4-40-20	4 - M22÷M48	CM5	60	95	270	40	20
CM5B-CT4-30-30	4 - M22÷M48	CM 5	60	95	260	30	30
CM5B-CT4-00-60	4 - M22÷M48	CM 5	60	95	230	0	60

CMB-CT (Form B)

MONOBLOC DESIGN - QUICK CHANGE TAPPING CHUCKS

INTEGRALE - MANDRINI A CAMBIO RAPIDO

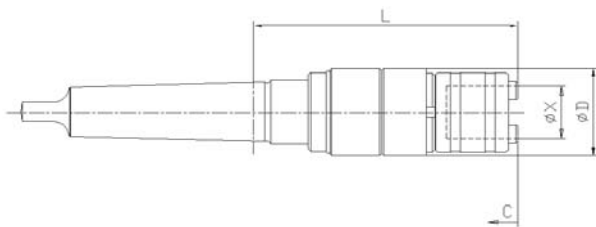


DIN 228

NEW

ONLY COMPRESSION WITH RADIAL PARALLEL FLOAT
COMPENSATO SOLO IN COMPRESSIONE CON GIOCO RADIALE

Part Number	Size	Tap Size	ØX	ØD	L	C	Float
CM1B-CP0-20-00	0 - M1÷M10	CM 1	13	23	123	20	0,25
CM1B-CP0-30-00	0 - M1÷M10	CM 1	13	23	143	30	0,25
CM1B-CP1-30-00	1 - M3÷M12	CM 1	19	35	148	30	0,5
CM1B-CP1-40-00	1 - M3÷M12	CM 1	19	35	168	40	0,5
CM2B-CP0-20-00	0 - M1÷M10	CM 2	13	23	124	20	0,25
CM2B-CP0-30-00	0 - M1÷M10	CM 2	13	23	144	30	0,25
CM2B-CP1-30-00	1 - M3÷M12	CM 2	19	35	149	30	0,5
CM2B-CP1-40-00	1 - M3÷M12	CM 2	19	35	169	40	0,5
CM2B-CP2-30-00	2 - M8÷M20	CM 2	31	50	183	30	1
CM2B-CP2-40-00	2 - M8÷M20	CM 2	31	50	203	40	1
CM2B-CP40-40-00	40 - M6÷M18	CM 2	26	40	196	40	0,75
CM3B-CP1-30-00	1 - M3÷M12	CM 3	19	35	149	30	0,5
CM3B-CP1-40-00	1 - M3÷M12	CM 3	19	35	169	40	0,5
CM3B-CP2-30-00	2 - M8÷M20	CM 3	31	50	183	30	1
CM3B-CP2-40-00	2 - M8÷M20	CM 3	31	50	203	40	1
CM3B-CP3-30-00	3 - M14÷M33	CM 3	48	72	239	30	1,5
CM3B-CP3-40-00	3 - M14÷M33	CM 3	48	72	259	40	1,5
CM3B-CP40-40-00	40 - M6÷M18	CM 3	26	40	196	40	0,75
CM4B-CP2-30-00	2 - M8÷M20	CM 4	31	50	184	30	1
CM4B-CP2-40-00	2 - M8÷M20	CM 4	31	50	204	40	1
CM4B-CP3-30-00	3 - M14÷M33	CM 4	48	72	240	30	1,5
CM4B-CP3-40-00	3 - M14÷M33	CM 4	48	72	260	40	1,5
CM4B-CP4-60-00	4 - M22÷M48	CM 4	60	95	336	60	2
CM5B-CP4-60-00	4 - M22÷M48	CM 5	60	95	337	60	2



CMB-CP (Form B)

MONOBLOC DESIGN - QUICK CHANGE TAPPING CHUCKS

INTEGRALE - MANDRINI A CAMBIO RAPIDO

DIN 228

COMPRESSION/EXPANSION WITH RADIAL PARALLEL FLOAT
 COMPENSATO IN COMPRESSIONE E TRAZIONE CON GIOCO
 RADIALE

NEW

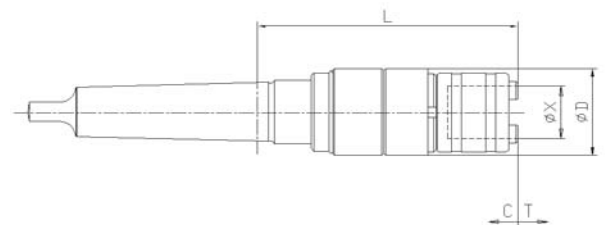
Part Number	Size	Tap Size	ØX	ØD	L	C	T	Float
CM1B-CTP0-20-10	0 - M1÷M10	CM 1	13	23	133	20	10	0,25
CM1B-CTP0-15-15	0 - M1÷M10	CM 1	13	23	128	15	15	0,25
CM1B-CTP0-00-30	0 - M1÷M10	CM 1	13	23	113	0	30	0,25
CM1B-CTP1-30-10	1 - M3÷M12	CM 1	19	35	158	30	10	0,5
CM1B-CTP1-20-20	1 - M3÷M12	CM 1	19	35	148	20	20	0,5
CM1B-CTP1-00-40	1 - M3÷M12	CM 1	19	35	128	0	40	0,5
CM2B-CTP0-20-10	0 - M1÷M10	CM 2	13	23	134	20	10	0,25
CM2B-CTP0-15-15	0 - M1÷M10	CM 2	13	23	129	15	15	0,25
CM2B-CTP0-00-30	0 - M1÷M10	CM 2	13	23	114	0	30	0,25
CM2B-CTP1-30-10	1 - M3÷M12	CM 2	19	35	159	30	10	0,5
CM2B-CTP1-20-20	1 - M3÷M12	CM 2	19	35	149	20	20	0,5
CM2B-CTP1-00-40	1 - M3÷M12	CM 2	19	35	129	0	40	0,5
CM2B-CTP2-30-10	2 - M8÷M20	CM 2	31	50	193	30	10	1
CM2B-CTP2-20-20	2 - M8÷M20	CM 2	31	50	183	20	20	1
CM2B-CTP2-00-40	2 - M8÷M20	CM 2	31	50	163	0	40	1
CM2B-CTP40-30-10	40 - M6÷M18	CM 2	26	40	186	30	10	0,75
CM2B-CTP40-20-20	40 - M6÷M18	CM 2	26	40	176	20	20	0,75
CM2B-CTP40-00-40	40 - M6÷M18	CM 2	26	40	156	0	40	0,75
CM3B-CTP1-30-10	1 - M3÷M12	CM 3	19	35	159	30	10	0,5
CM3B-CTP1-20-20	1 - M3÷M12	CM 3	19	35	149	20	20	0,5
CM3B-CTP1-00-40	1 - M3÷M12	CM 3	19	35	129	0	40	0,5
CM3B-CTP2-30-10	2 - M8÷M20	CM 3	31	50	193	30	10	1
CM3B-CTP2-20-20	2 - M8÷M20	CM 3	31	50	183	20	20	1
CM3B-CTP2-00-40	2 - M8÷M20	CM 3	31	50	163	0	40	1

continued / continua

CMB-CTP (Form B)

MONOBLOC DESIGN - QUICK CHANGE TAPPING CHUCKS

INTEGRALE - MANDRINI A CAMBIO RAPIDO

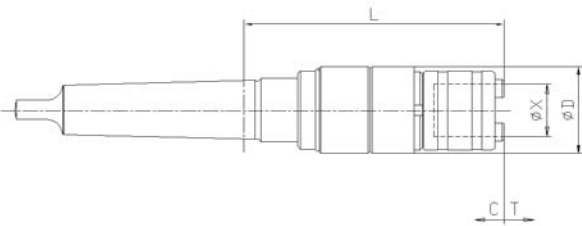


DIN 228

NEW

COMPRESSION/EXPANSION WITH RADIAL PARALLEL FLOAT
*COMPENSATO IN COMPRESSIONE E TRAZIONE CON GIOCO
 RADIALE*

Part Number	Size	Tap Size	ØX	ØD	L	C	T	Float
CM3B-CTP3-30-10	3 - M14÷M33	CM 3	48	72	249	30	10	1,5
CM3B-CTP3-20-20	3 - M14÷M33	CM 3	48	72	239	20	20	1,5
CM3B-CTP3-00-40	3 - M14÷M33	CM 3	48	72	219	0	40	1,5
CM3B-CTP40-30-10	40 - M6÷M18	CM 3	26	40	186	30	10	0,75
CM3B-CTP40-20-20	40 - M6÷M18	CM3	26	40	176	20	20	0,75
CM3B-CTP40-00-40	40 - M6÷M18	CM 3	26	40	156	0	40	0,75
CM4B-CTP2-30-10	2 - M8÷M20	CM 4	31	50	194	30	10	1
CM4B-CTP2-20-20	2 - M8÷M20	CM 4	31	50	184	20	20	1
CM4B-CTP2-00-40	2 - M8÷M20	CM 4	31	50	164	0	40	1
CM4B-CTP3-30-10	3 - M14÷M33	CM 4	48	72	250	30	10	1,5
CM4B-CTP3-20-20	3 - M14÷M33	CM 4	48	72	240	20	20	1,5
CM4B-CTP3-00-40	3 - M14÷M33	CM 4	48	72	220	0	40	1,5
CM4B-CTP4-40-20	4 - M22÷M48	CM 4	60	95	316	40	20	2
CM4B-CTP4-30-30	4 - M22÷M48	CM 4	60	95	306	30	30	2
CM4B-CTP4-00-60	4 - M22÷M48	CM 4	60	95	276	0	60	2
CM5B-CTP4-40-20	4 - M22÷M48	CM5	60	95	317	40	20	2
CM5B-CTP4-30-30	4 - M22÷M48	CM 5	60	95	307	30	30	2
CM5B-CTP4-00-60	4 - M22÷M48	CM 5	60	95	277	0	60	2



CMB-CTP (Form B)

MONOBLOC DESIGN - QUICK CHANGE TAPPING CHUCKS

INTEGRALE - MANDRINI A CAMBIO RAPIDO

DIN 228

TAP HOLDERS SOLID TYPE

MANDRINO RIGIDO PER LAVORAZIONI CICLICHE

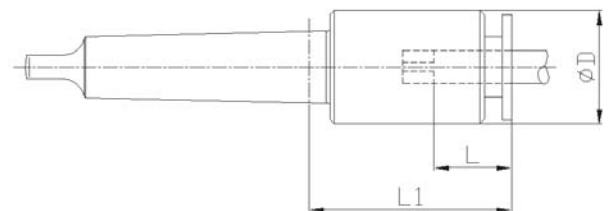
NEW

Part Number	Size	Tap Size	ØD	L	L1
SW0-CM0-2521	CM 0	DIN 2,5 x 2,1	14	37	15
SW0-CM0-2821	CM 0	DIN 2,8 x 2,1	14	37	15
SW0-CM0-3527	CM 0	DIN 3,5 x 2,7	14	37	15
SW0-CM0-0430	CM 0	DIN 4 x 3	14	37	15
SW0-CM0-4534	CM 0	DIN 4,5 x 3,4	14	37	15
SW0-CM0-0649	CM 0	DIN 6 x 4,9	14	37	15
SW0-CM0-0755	CM 0	DIN 7 x 5,5	14	37	15
SW0-CM0-2520	CM 0	ISO 2,5 x 2	14	37	15
SW0-CM0-28224	CM 0	ISO 2,8 x 2,24	14	37	15
SW0-CM0-31525	CM 0	ISO 3,15 x 2,5	14	37	15
SW0-CM0-35528	CM 0	ISO 3,55 x 2,8	14	37	15
SW0-CM0-04315	CM 0	ISO 4 x 3,15	14	37	15
SW0-CM0-45355	CM 0	ISO 4,5 x 3,55	14	37	15
SW0-CM0-0540	CM 0	ISO 5 x 4	14	37	15
SW0-CM0-5645	CM 0	ISO 5,6 x 4,5	14	37	15
SW0-CM0-6350	CM 0	ISO 6,3 x 5	14	37	15
SW0-CM0-7156	CM 0	ISO 7,1 x 5,6	14	37	15
SW1-CM1-4534	CM 1	DIN 4,5 x 3,4	19	46	17
SW1-CM1-0649	CM 1	DIN 6 x 4,9	19	46	17
SW1-CM1-0755	CM 1	DIN 7 x 5,5	19	46	17
SW1-CM1-0862	CM 1	DIN 8 x 6,2	19	46	17
SW1-CM1-0970	CM 1	DIN 9 x 7	19	46	17
SW1-CM1-1080	CM 1	DIN 10 x 8	19	46	17
SW1-CM1-1190	CM 1	DIN 11 x 9	19	46	17
continued / continua					

CMB-SW (Form B)

MONOBLOC DESIGN FOR TAP

INTEGRALE - PER MASCHI

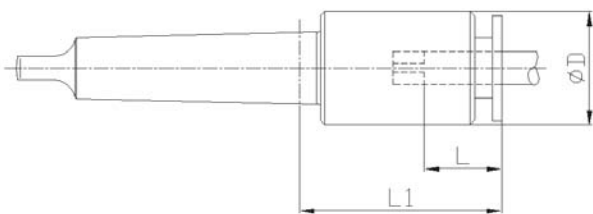


NEW

TAP HOLDERS SOLID TYPE

MANDRINO RIGIDO PER LAVORAZIONI CICLICHE

Part Number	Size	Tap Size	ØD	L	L1
SW1-CM1-45355	CM 1	ISO 4,5 x 3,55	19	46	17
SW1-CM1-0540	CM 1	ISO 5 x 4	19	46	17
SW1-CM1-5645	CM 1	ISO 5,6 x 4,5	19	46	17
SW1-CM1-6350	CM 1	ISO 6,3 x 5	19	46	17
SW1-CM1-7156	CM 1	ISO 7,1 x 5,6	19	46	17
SW1-CM1-0863	CM 1	ISO 8 x 6,3	19	46	17
SW1-CM1-0971	CM 1	ISO 9 x 7,1	19	46	17
SW1-CM1-1080	CM 1	ISO 10 x 8	19	46	17
SW1-CM1-11290	CM 1	ISO 11,2 x 9	19	46	17
SW1-CM2-4534	CM 2	DIN 4,5 x 3,4	19	47	17
SW1-CM2-0649	CM 2	DIN 6 x 4,9	19	47	17
SW1-CM2-0755	CM 2	DIN 7 x 5,5	19	47	17
SW1-CM2-0862	CM 2	DIN 8 x 6,2	19	47	17
SW1-CM2-0970	CM 2	DIN 9 x 7	19	47	17
SW1-CM2-1080	CM 2	DIN 10 x 8	19	47	17
SW1-CM2-1190	CM 2	DIN 11 x 9	19	47	17
SW1-CM2-45355	CM 2	ISO 4,5 x 3,55	19	47	17
SW1-CM2-0540	CM 2	ISO 5 x 4	19	47	17
SW1-CM2-5645	CM 2	ISO 5,6 x 4,5	19	47	17
SW1-CM2-6350	CM 2	ISO 6,3 x 5	19	47	17
SW1-CM2-7156	CM 2	ISO 7,1 x 5,6	19	47	17
SW1-CM2-0863	CM 2	ISO 8 x 6,3	19	47	17
SW1-CM2-0971	CM 2	ISO 9 x 7,1	19	47	17
SW1-CM2-1080	CM 2	ISO 10 x 8	19	47	17
continued / continua					



CMB-SW (Form B)

MONOBLOC DESIGN FOR TAP

INTEGRALE - PER MASCHI

DIN 228

TAP HOLDERS SOLID TYPE

MANDRINO RIGIDO PER LAVORAZIONI CICLICHE

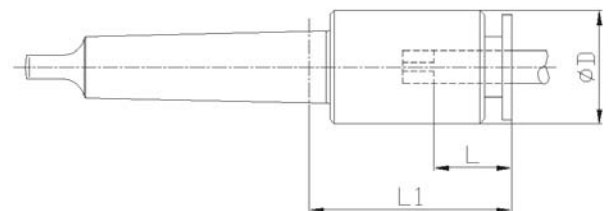
NEW

Part Number	Size	Tap Size	ØD	L	L1
SW1-CM2-11290	CM 2	ISO 11,2 x 9	19	47	17
SW2-CM2-0755	CM 2	DIN 7 x 5,5	31	72	30
SW2-CM2-0862	CM 2	DIN 8 x 6,2	31	72	30
SW2-CM2-0970	CM 2	DIN 9 x 7	31	72	30
SW2-CM2-1080	CM 2	DIN 10 x 8	31	72	30
SW2-CM2-1190	CM 2	DIN 11 x 9	31	72	30
SW2-CM2-1290	CM 2	DIN 12 x 9	31	72	30
SW2-CM2-1411	CM 2	DIN 14 x 11	31	72	30
SW2-CM2-1612	CM 2	DIN 16 x 12	31	72	30
SW2-CM2-18145	CM 2	DIN 18 x 14,5	31	72	30
SW2-CM2-7156	CM 2	ISO 7,1 x 5,6	31	72	30
SW2-CM2-0863	CM 2	ISO 8 x 6,3	31	72	30
SW2-CM2-0971	CM 2	ISO 9 x 7,1	31	72	30
SW2-CM2-1080	CM 2	ISO 10 x 8	31	72	30
SW2-CM2-11290	CM 2	ISO 11,2 x 9	31	72	30
SW2-CM2-12510	CM 2	DIN 12,5 x 10	31	72	30
SW2-CM2-14112	CM 2	DIN 14 x 11,2	31	72	30
SW2-CM2-16125	CM 2	DIN 16 x 12,5	31	72	30
SW2-CM2-1814	CM 2	DIN 18 x 14	31	72	30
SW2-CM3-0755	CM 3	DIN 7 x 5,5	31	72	30
SW2-CM3-0862	CM 3	DIN 8 x 6,2	31	72	30
SW2-CM3-0970	CM 3	DIN 9 x 7	31	72	30
SW2-CM3-1080	CM 3	DIN 10 x 8	31	72	30
SW2-CM3-1190	CM 3	DIN 11 x 9	31	72	30
continued / continua					

CMB-SW (Form B)

MONOBLOC DESIGN FOR TAP

INTEGRALE - PER MASCHI



DIN 228

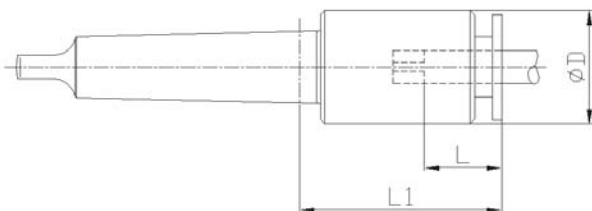
NEW

TAP HOLDERS SOLID TYPE

MANDRINO RIGIDO PER LAVORAZIONI CICLICHE

Part Number	Size	Tap Size	ØD	L	L1
SW2-CM3-1290	CM 3	DIN 12 x 9	31	72	30
SW2-CM3-1411	CM 3	DIN 14 x 11	31	72	30
SW2-CM3-1612	CM 3	DIN 16 x 12	31	72	30
SW2-CM3-18145	CM 3	DIN 18 x 14,5	31	72	30
SW2-CM3-7156	CM 3	ISO 7,1 x 5,6	31	72	30
SW2-CM3-0863	CM 3	ISO 8 x 6,3	31	72	30
SW2-CM3-0971	CM 3	ISO 9 x 7,1	31	72	30
SW2-CM3-1080	CM 3	ISO 10 x 8	31	72	30
SW2-CM3-11290	CM 3	ISO 11,2 x 9	31	72	30
SW2-CM3-12510	CM 3	ISO 12,5 x 10	31	72	30
SW2-CM3-14112	CM 3	ISO 14 x 11,2	31	72	30
SW2-CM3-16125	CM 3	ISO 16 x 12,5	31	72	30
SW2-CM3-1814	CM 3	ISO 18 x 14	31	72	30
SW3-CM3-1190	CM 3	DIN 11 x 9	48	90	44
SW3-CM3-1290	CM 3	DIN 12 x 9	48	90	44
SW3-CM3-1411	CM 3	DIN 14 x 11	48	90	44
SW3-CM3-1612	CM 3	DIN 16 x 12	48	90	44
SW3-CM3-18145	CM 3	DIN 18 x 14,5	48	90	44
SW3-CM3-2016	CM 3	DIN 20 x 16	48	90	44
SW3-CM3-2218	CM 3	DIN 22 x 18	48	90	44
SW3-CM3-2520	CM 3	DIN 25 x 20	48	90	44
SW3-CM3-2822	CM 3	DIN 28 x 22	48	90	44
SW3-CM3-11290	CM 3	ISO 11,2 x 9	48	90	44
SW3-CM3-12510	CM 3	ISO 12,5 x 10	48	90	44

continued / continua



CMB-SW (Form B)

MONOBLOC DESIGN FOR TAP

INTEGRALE - PER MASCHI

DIN 228

TAP HOLDERS SOLID TYPE

MANDRINO RIGIDO PER LAVORAZIONI CICLICHE

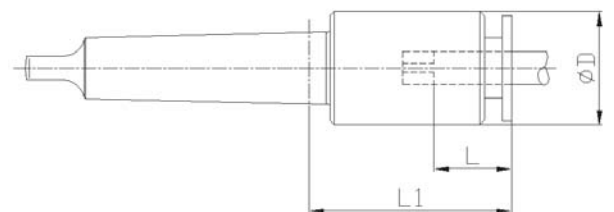
NEW

Part Number	Size	Tap Size	ØD	L	L1
SW3-CM3-14112	CM 3	ISO 14 x 11,2	48	90	44
SW3-CM3-16125	CM 3	ISO 16 x 12,5	48	90	44
SW3-CM3-1814	CM 3	ISO 18 x 14	48	90	44
SW3-CM3-2016	CM 3	ISO 20 x 16	48	90	44
SW3-CM3-22418	CM 3	ISO 22,4 x 18	48	90	44
SW3-CM3-2520	CM 3	ISO 25 x 20	48	90	44
SW3-CM3-28224	CM 3	ISO 28 x 22,4	48	90	44
SW3-CM4-1190	CM 4	DIN 11 x 9	48	91	44
SW3-CM4-1290	CM 4	DIN 12 x 9	48	91	44
SW3-CM4-1411	CM 4	DIN 14 x 11	48	91	44
SW3-CM4-1612	CM 4	DIN 16 x 12	48	91	44
SW3-CM4-18145	CM 4	DIN 18 x 14,5	48	91	44
SW3-CM4-2016	CM 4	DIN 20 x 16	48	91	44
SW3-CM4-2218	CM 4	DIN 22 x 18	48	91	44
SW3-CM4-2520	CM 4	DIN 25 x 20	48	91	44
SW3-CM4-2822	CM 4	DIN 28 x 22	48	91	44
SW3-CM4-11290	CM 4	ISO 11,2 x 9	48	91	44
SW3-CM4-12510	CM 4	ISO 12,5 x 10	48	91	44
SW3-CM4-14112	CM 4	ISO 14 x 11,2	48	91	44
SW3-CM4-16125	CM 4	ISO 16 x 12,5	48	91	44
SW3-CM4-1814	CM 4	ISO 18 x 14	48	91	44
SW3-CM4-2016	CM 4	ISO 20 x 16	48	91	44
SW3-CM4-22418	CM 4	ISO 22,4 x 18	48	91	44
SW3-CM4-2520	CM 4	ISO 25 x 20	48	91	44
continued / continua					

CMB-SW (Form B)

MONOBLOC DESIGN FOR TAP

INTEGRALE - PER MASCHI



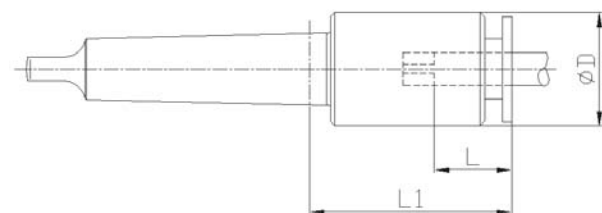
DIN 228

NEW

TAP HOLDERS SOLID TYPE

MANDRINO RIGIDO PER LAVORAZIONI CICLICHE

Part Number	Size	Tap Size	ØD	L	L1
SW3-CM4-28224	CM 4	ISO 28 x 22,4	48	91	44
SW4-CM4-18145	CM 4	DIN 18 x 14,5	60	126	71
SW4-CM4-2016	CM 4	DIN 20 x 16	60	126	71
SW4-CM4-2218	CM 4	DIN 22 x 18	60	126	71
SW4-CM4-2520	CM 4	DIN 25 x 20	60	126	71
SW4-CM4-2822	CM 4	DIN 28 x 22	60	126	71
SW4-CM4-3224	CM 4	DIN 32 x 24	60	126	71
SW4-CM4-3629	CM 4	DIN 36 x 29	60	126	71
SW4-CM4-1814	CM 4	ISO 18 x 14	60	126	71
SW4-CM4-2016	CM 4	ISO 20 x 16	60	126	71
SW4-CM4-22418	CM 4	ISO 22,4 x 18	60	126	71
SW4-CM4-2520	CM 4	ISO 25 x 20	60	126	71
SW4-CM4-28224	CM 4	ISO 28 x 22,4	60	126	71
SW4-CM4-31525	CM 4	ISO 31,5 x 25	60	126	71
SW4-CM4-35528	CM 4	ISO 35,5 x 28	60	126	71
SW4-CM5-18145	CM 5	DIN 18 x 14,5	60	127	71
SW4-CM5-2016	CM 5	DIN 20 x 16	60	127	71
SW4-CM5-2218	CM 5	DIN 22 x 18	60	127	71
SW4-CM5-2520	CM 5	DIN 25 x 20	60	127	71
SW4-CM5-2822	CM 5	DIN 28 x 22	60	127	71
SW4-CM5-3224	CM 5	DIN 32 x 24	60	127	71
SW4-CM5-3629	CM 5	DIN 36 x 29	60	127	71
SW4-CM5-1814	CM 5	ISO 18 x 14	60	127	71
SW4-CM5-2016	CM 5	ISO 20 x 16	60	127	71



CMB-SW (Form B)

MONOBLOC DESIGN FOR TAP

INTEGRALE - PER MASCHI

DIN 228

TAP HOLDERS SOLID TYPE

MANDRINO RIGIDO PER LAVORAZIONI CICLICHE

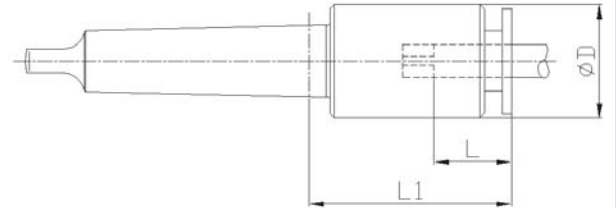
NEW

Part Number	Size	Tap Size	ØD	L	L1
SW4-CM5-22418	CM 5	ISO 22,4 x 18	60	127	71
SW4-CM5-2520	CM 5	ISO 25 x 20	60	127	71
SW4-CM5-28224	CM 5	ISO 28 x 22,4	60	127	71
SW4-CM5-31525	CM 5	ISO 31,5 x 25	60	127	71
SW4-CM5-35528	CM 5	ISO 35,5 x 28	60	127	71

CMB-SW (Form B)

MONOBLOC DESIGN FOR TAP

INTEGRALE - PER MASCHI



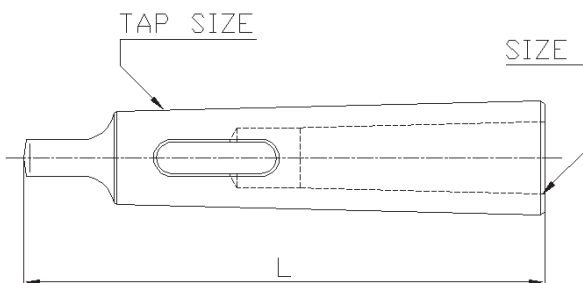
DIN 228

NEW

REDUCING SLEEVES

BUSSOLA DI RIDUZIONE PER CONI MORSE

Part Number	Tap Size	Size	L
CM2B-CM1-L92	CM 2	CM 1	92
CM3B-CM1-L99	CM 3	CM 1	99
CM3B-CM2-L112	CM 3	CM 2	112
CM4B-CM1-L124	CM 4	CM 1	124
CM4B-CM2-L124	CM 4	CM 2	124
CM4B-CM3-L140	CM 4	CM 3	140
CM5B-CM1-L156	CM 5	CM 1	156
CM5B-CM2-L156	CM 5	CM 2	156
CM5B-CM3-L156	CM 5	CM 3	156
CM5B-CM4-L171	CM 5	CM 4	171
CM6B-CM2-L218	CM 6	CM 2	218
CM6B-CM3-L218	CM 6	CM 3	218
CM6B-CM4-L218	CM 6	CM 4	218
CM6B-CM5-L218	CM 6	CM 5	218



CMB-CM (Form B)

DIN 2185 HARDENED, GROUND INTERNALLY AND EXTERNALLY

DIN 2185 TEMPERATA, RETTIFICATA INTERNAMENTE ED ESTERNAMENTE

DIN 228

EXTENSIONS SLEEVES *PROLUNGA PER CONI MORSE*

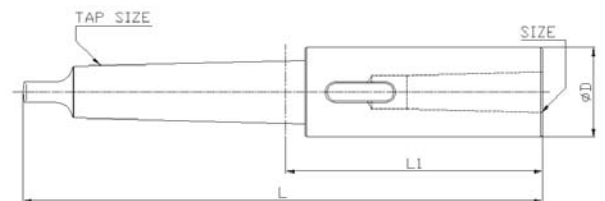
NEW

Part Number	Tap Size	Size	ØD	L	L1
CM1B-XCM1-L145	CM 1	CM 1	20	145	83
CM1B-XCM2-L160	CM 1	CM 2	30	160	98
CM2B-XCM1-L160	CM 2	CM 1	20	160	85
CM2B-XCM2-L175	CM 2	CM 2	30	175	100
CM2B-XCM3-L196	CM 2	CM 3	36	196	121
CM3B-XCM1-L175	CM 3	CM 1	20	175	81
CM3B-XCM2-L194	CM 3	CM 2	30	194	100
CM3B-XCM3-L215	CM 3	CM 3	36	215	121
CM3B-XCM4-L240	CM 3	CM 4	48	240	146
CM4B-XCM1-L200	CM 4	CM 1	20	200	82,5
CM4B-XCM2-L215	CM 4	CM 2	30	215	97,5
CM4B-XCM3-L240	CM 4	CM 3	36	240	122,5
CM4B-XCM4-L265	CM 4	CM 4	48	265	147,5
CM4B-XCM5-L300	CM 4	CM 5	63	300	182,5
CM5B-XCM1-L232	CM 5	CM 1	20	232	82,5
CM5B-XCM2-L247	CM 5	CM 2	30	247	97,5
CM5B-XCM3-L228	CM 5	CM 3	36	228	118,5
CM5B-XCM4-L300	CM 5	CM 4	48	300	150,5
CM5B-XCM5-L335	CM 5	CM 5	63	335	185,5
CM6B-XCM3-L330	CM 6	CM 3	36	330	120
CM6B-XCM4-L355	CM 6	CM 4	48	355	145
CM6B-XCM5-L390	CM 6	CM 5	63	390	180

CMB-XCM (Form B)

DIN 2187 HARDENED, GROUND INTERNALLY AND EXTERNALLY

DIN 2187 TEMPERATA, RETTIFICATA INTERNAMENTE ED ESTERNAMENTE

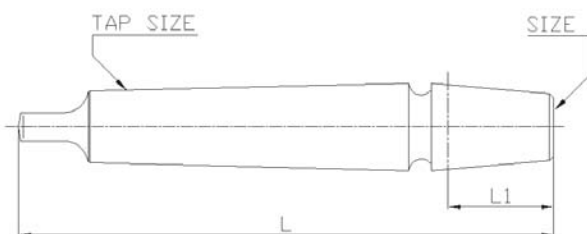


DIN 228

NEW

TAPER SHANK ARBORS FOR DRILL CHUCKS *ATTACCHI PER MANDRINI AUTOSERRANTI*

Part Number	Tap Size	Size	L	L1
CM1B-B10-L83	CM 1	DIN B10	83	14,5
CM1B-B12-L89	CM 1	DIN B12	89	18,5
CM1B-B16-L99	CM 1	DIN B16	99	24,5
CM1B-B18-L99	CM 1	DIN B18	99	32
CM1B-J1-L86	CM 1	JACOBS 1	86	16,67
CM1B-J2-L92	CM 1	JACOBS 2	92	22,23
CM1B-J3-L102	CM 1	JACOBS 3	102	30,96
CM1B-J6-L96	CM 1	JACOBS 6	96	25,4
CM2B-B10-L105	CM 2	DIN B10	105	14,5
CM2B-B12-L106	CM 2	DIN B12	106	18,5
CM2B-B16-L112	CM 2	DIN B16	112	24
CM2B-B18-L119	CM 2	DIN B18	119	32
CM2B-B22-L130	CM 2	DIN B22	130	40,5
CM2B-J1-L101	CM 2	JACOBS 1	101	16,67
CM2B-J2-L107	CM 2	JACOBS 2	107	22,23
CM2B-J3-L117	CM 2	JACOBS 3	117	30,96
CM2B-J6-L111	CM 2	JACOBS 6	111	25,4
CM3B-B12-L125	CM 3	DIN B12	125	18,5
CM3B-B16-L134	CM 3	DIN B16	134	24
CM3B-B18-L140	CM 3	DIN B18	140	32
CM3B-B22-L147	CM 3	DIN B22	147	40,5
CM3B-B24-L157	CM 3	DIN B24	157	50,5
CM3B-J1-L125	CM 3	JACOBS 1	125	16,67
CM3B-J2-L126	CM 3	JACOBS 2	126	22,23
continued / continua				



CMB-BJ (Form B)

DIN 238 AND JACOBS DRILL CHUCK TAPER COMPLETELY HARDENED AND SHARPENED

PER MANDRINI CON ATTACCO DIN 238 E JACOBS COMPLETAMENTE TEMPERATO E RETTIFICATO

DIN 228

TAPER SHANK ARBORS FOR DRILL CHUCKS *ATTACCHI PER MANDRINI AUTOSERRANTI*

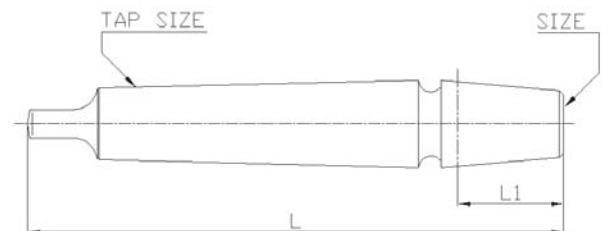
NEW

Part Number	Tap Size	Size	L	L1
CM3B-J3-L136	CM 3	JACOBS 3	136	30,96
CM3B-J4-L147	CM 3	JACOBS 4	147	42,07
CM4B-B16-L156	CM 4	DIN B16	156	24
CM4B-B18-L164	CM 4	DIN B18	164	32
CM4B-B22-L176	CM 4	DIN B22	176	40,5
CM4B-B24-L186	CM 4	DIN B24	186	50,5
CM4B-J3-L162	CM 4	JACOBS 3	162	30,96
CM4B-J6-L156	CM 4	JACOBS 6	156	25,4
CM4B-J4-L173	CM 4	JACOBS 4	173	42,07
CM5B-B16-L198	CM 5	DIN B16	198	24
CM5B-B18-L198	CM 5	DIN B18	198	32
CM5B-B22-L207	CM 5	DIN B22	207	40,5
CM5B-B24-L217	CM 5	DIN B24	217	50,5

CMB-BJ (Form B)

DIN 238 AND JACOBS DRILL CHUCK TAPER COMPLETELY HARDENED AND SHARPENED

PER MANDRINI CON ATTACCO DIN 238 E JACOBS COMPLETAMENTE TEMPERATO E RETTIFICATO

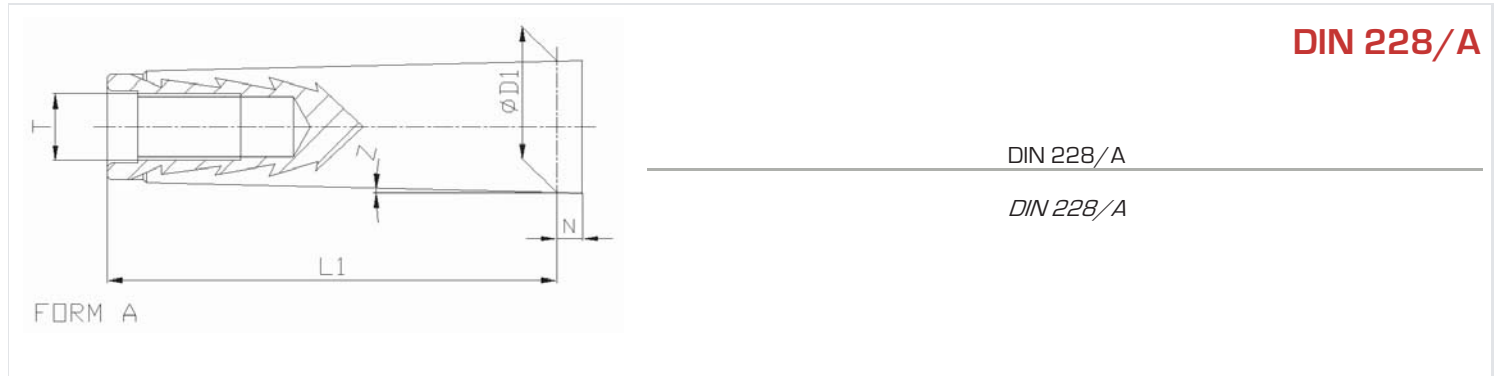


DIN 228

DIMENSIONS

DIMENSIONI

Tap Size	L1	N	ØD1	Z	T
DIN228A - CM 0	50	3	9,045	1° 29' 27"	-
DIN228A - CM 1	53,5	3,5	12,065	1° 25' 43"	M 6
DIN228A - CM 2	64	5	17,780	1° 25' 50"	M 10
DIN228A - CM 3	81	5	23,825	1° 26' 16"	M 12
DIN228A - CM 4	102,5	6,5	31,267	1° 29' 15"	M 16
DIN228A - CM 5	129,5	6,5	44,399	1° 30' 26"	M 20



DIN 228

DIMENSIONS

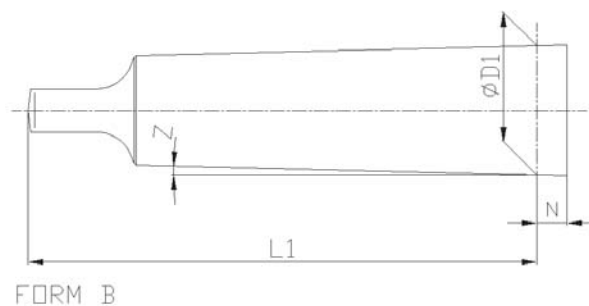
DIMENSIONI

Tap Size	L1	N	ØD1	Z	T
DIN228B - CM 0	56,5	3	9,045	1° 29' 27"	-
DIN228B - CM 1	62	3,5	12,065	1° 25' 43"	-
DIN228B - CM 2	75	5	17,780	1° 25' 50"	-
DIN228B - CM 3	94	5	23,825	1° 26' 16"	-
DIN228B - CM 4	117,5	6,5	31,267	1° 29' 15"	-
DIN228B - CM 5	149,5	6,5	44,399	1° 30' 26"	-

DIN 228/B

DIN 228/B

DIN 228/B



Seinco Components s.r.l.

Via della Basilica, 2

10122 - Torino - Italy

P.Iva - Vat : 09226290014

Tel. : +39 011 4361658

Fax : +39 011 4361658

e-mail : sales@seincosrl.com

<http://www.seincosrl.com>